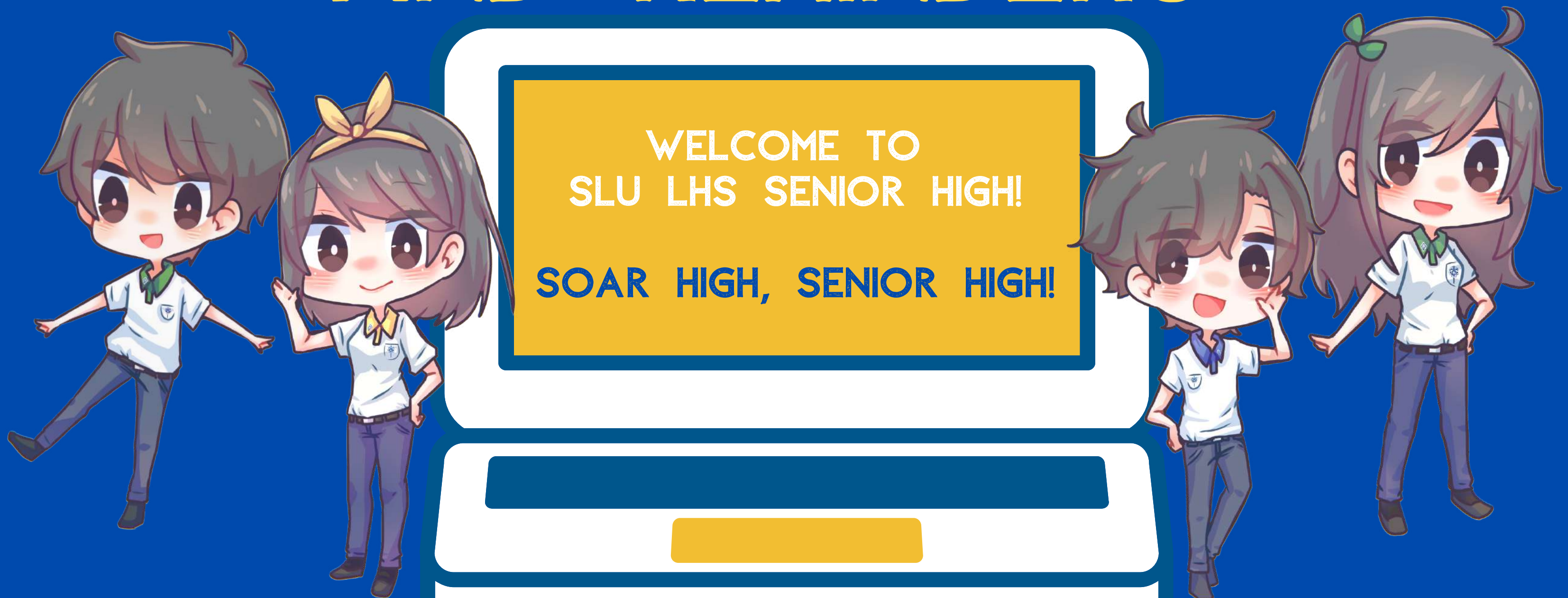




SAINT LOUIS UNIVERSITY  
LABORATORY HIGH SCHOOL  
SENIOR HIGH



# ENROLLMENT REQUIREMENTS AND REMINDERS



# FOR INCOMING GRADE II STUDENTS

1. GRADE 10 REPORT CARD/ FORM 138 (FRONT PAGE AND BACK PAGE)
2. NSO/PSA COPY OF BIRTH CERTIFICATE
3. QVR OR ESC CERTIFICATE; (IF STUDENT IS A QUALIFIED VOUCHER RECIPIENT OR ESC GRANTEE)
4. LETTER OF RECOMMENDATION (FOR GRADE 11 TRANSFEREES ONLY). YOU MAY DOWNLOAD THE FORM FROM THIS LINK;  
[HTTP://WWW.SLU.EDU.PH/WP-CONTENT/UPLOADS/2019/02/SLU-LHS-SENIOR-HIGH-LETTER-OF-RECOMMENDATION.PDF](http://www.slu.edu.ph/wp-content/uploads/2019/02/slu-lhs-senior-high-letter-of-recommendation.pdf)
5. CERTIFICATE OF DISCOUNT ON TUITION AND OTHER FEES  
(\*SLU DEPENDENTS ONLY\* - PLS. SECURE IT FROM THE SLU FINANCE OFFICE)
6. CERTIFICATE OF RANKING WITH THE SCHOOL'S OFFICIAL SEAL/DEPED SEAL DULY SIGNED BY THE PRINCIPAL (FOR GRADE 11 STUDENTS - FIRST AND SECOND IN RANKS ONLY)
7. CERTIFICATE OF MEMBERSHIP IN LHS MARCHING BAND (FOR BAND MEMBERS ONLY  
C/O MRS. MARIVIC MACADAEG)



# FOR INCOMING GRADE 12 STUDENTS

1. FORM 138/GRADE 11 REPORT CARD
2. NSO/PSA COPY OF BIRTH CERTIFICATE
3. \*\*CERTIFICATE OF DISCOUNT ON TUITION AND OTHER FEES (SLU DEPENDENTS ONLY - PLS. SECURE IT FROM THE SLU FINANCE OFFICE)

# IMPORTANT REMINDERS

I. FOR THOSE WHO HAVE NOT YET APPLIED ONLINE,

THE APPLICATION FOR GRADE II IS STILL ON GOING.  
KINDLY USE THIS LINK OR SCAN THE QR CODE TO  
APPLY

[HTTPS://SLU370.CAMPUS-ERP.COM/APPLYONLINE](https://slu370.campus-erp.com/applyonline)



II. RESERVATIONS WILL BE CONSIDERED VOID IF A  
STUDENT HAS NOT YET APPLIED. APPLICATIONS  
MUST BE APPROVED BEFORE YOU CAN RESERVE  
YOUR SLOT.

# IMPORTANT REMINDERS

III. SENIOR HIGH QUALIFYING EXAM PASSERS AND SLU-LHS JUNIOR HIGH GRADE 10 STUDENTS, YOU MAY ALREADY RESERVE YOUR SLOTS. THERE IS NO NEED TO APPLY ONLINE. YOU MAY USE THIS LINK OR SCAN THE QR CODE TO RESERVE

LINK 1: [HTTPS://FORMS.GLE/BJ90YAWKEHUKGJN87](https://forms.gle/BJ90YAWKEHUKGJN87)



LINK 2: [HTTPS://BIT.LY/3BCUHV7](https://bit.ly/3BCUHV7)

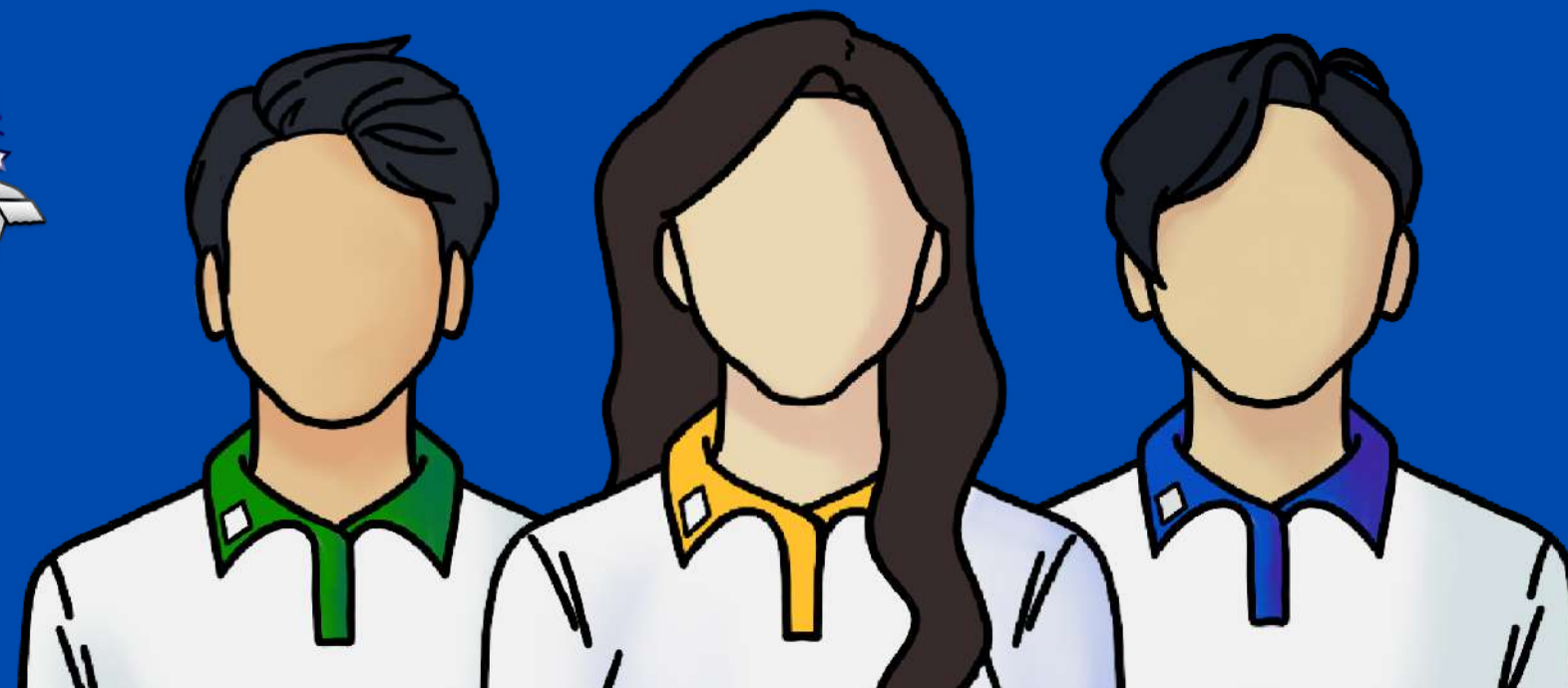


IV. FOR APPLICANTS WHO ARE UNABLE TO ENROLL ON THE GIVEN SCHEDULE, YOU MAY RESERVE YOUR SLOT AND WAIT FOR FURTHER ANNOUNCEMENTS.

V. FOR QUERIES REGARDING TUITION FEES AND OTHER FINANCIAL MATTERS SUCH AS THE VOUCHER, KINDLY CONTACT OUR SCHOOL CASHIER AT (074) 447-0664

VI. FOR OTHER QUERIES, YOU MAY MESSAGE US THROUGH THIS FACEBOOK PAGE OR THE OFFICIAL FACEBOOK PAGE OF SLU-LHS SENIOR HIGH.

[WWW.FACEBOOK.COM/SLU.LHSH](http://WWW.FACEBOOK.COM/SLU.LHSH)



WE APPRECIATE YOUR FEEDBACK AND INTEREST IN STUDYING IN SLU-LHS SENIOR HIGH.

AT PRESENT, WE ARE ACCOMMODATING MULTIPLE APPLICATIONS AND RESERVATIONS FOR INCOMING GRADE II INCLUDING QUERIES ON OTHER MATTERS RELATED TO ADMISSION.

HENCE, OUR RESPONSE TO YOUR REQUEST AND QUERIES MAY TAKE SOME TIME. KINDLY BEAR WITH US AS WE ARE DOING OUR BEST TO ACCOMMODATE YOUR QUESTIONS AS SOON AS WE CAN.

THANK YOU!

- SLU LHS SENIOR HIGH ADMISSION COMMITTEE

