



SAINT LOUIS UNIVERSITY



CONCERT ORCHESTRA

AUGUST 2019 TO JULY 2022

PORTFOLIO



THE SAINT LOUIS UNIVERSITY
CONCERT ORCHESTRA

TABLE OF CONTENTS

Center for Culture and the Arts History -----	1
The Saint Louis University Concert Orchestra -----	2
The SLU Concert Orchestra Members -----	3
Performances	
A.Y. 2019-2020	
National Hospital Week 2019 at the Baguio General Hospital -----	6
Joseph and the Amazing Technicolor Dreamcoat -----	8
Ibagiw -----	10
Glorious -----	12
A.Y. 2020-2021	
International Cross Cultural Day 2020 -----	16
Indigenous Peoples Month 2020 -----	18
Hark! The King Has Come! -----	19
Supreme Court of the Philippines and Saint Louis University Contract Signing -----	21
OST VI: Anime Alliance -----	23
A.Y. 2021-2022	
For Jasmin -----	27
Buwan ng Wika 2021 -----	30
Saint Louis University 110 Years Foundation Anniversary: Tribute to CICM -----	31
Panagbenga 2022 Opening -----	32
Montañosa Film Festival 2022 Opening -----	33
30th Sacerdotal Anniversary of Rev. Fr. Gilbert B. Sales -----	34
SINAG: Innovations In the Global Landscape -----	36
Saint Louis University Service Awards 2022 -----	37
50th Anniversary of Saint Aloysius Gonzaga Parish -----	40
OST VII: Re:Assemble Time Skip Arc -----	41
ANTENA Internationalization and Globalization - Training of Trainers Conference -----	45
Saint Louis University Academic Session 2022 -----	46
Obramaestrang Piging sa Kaarawan ng Mahal Naming Father Gilbert -----	49

CENTER FOR CULTURE AND THE ARTS HISTORY

The CCA Performing Group had a rare change of presenting "The Tale of Kiwada" in 2002 and "The Nine Fathers" in 2007 in St. Mary's University in Bayombong, Nueva Vizcaya and the Saint Louis College in La Union. In 2000, the SLU Glee Club and Dance Troupe were invited on their first ever international performance tour to California, USA, where they staged "Dinulawan ken Bugan" and "Paskuhan", delighting foreign audiences with their dynamic take on Cordilleran culture and bringing a taste of home and nostalgia to the Filipino-American audience. In 2004, they performed "The Tale of Kiwada" and "Fiesta: Philippine Folk Songs and Dances" in the three campuses of Jinan University in Guangzhou, China, in 2011 in Brussels, Kortrijk, and Ghent campus of Katholieke Universiteit Lueven, and in the different parishes of Belgium. To top it all, the Dance Troupe, the Glee Club, and the Tanghalang SLU are consistent winners of major awards in several competitions. The Dance Troupe was inducted to the Hall of Fame in the Panagbenga Street Dancing Competition in 2004. They were also the champion in the Sayaw Pinoy National Dance Competition in the Contemporary and Philippine Folk Dance in 2012. Meanwhile, the Glee Club was the Grand Prize winner for two consecutive years in the Saniweng Competition, and the Grand Champion in 2005 in the National Music Competition for Young Artists (NAMCYA), the most prestigious choral competition in the country. Finally, the Tanghalang SLU was a Hall of Fame awardee as Best Cultural Group in the 2-15 Aliw Awards. Needless to say, all performances of the resident groups of the CCA, honed through years of diligence, rigor, and dedication to their art, have reaped astounding positive responses and numerous accolades — truly a testimony of the exemplary capabilities of both its mentors and members. The center has also widened its branches and created its youngest performing group, the SLU Concert Orchestra, upon the initiative of Fr. Jessie Hechanova in 2008. Originally named the SLU String Ensemble, which had 16 members, at present, the orchestra has 30 members and 8 sections. In 2013, the CCA also included the prestigious SLU Marching Band as its fifth resident group, and it is now known as the SLU Symphonic Band.

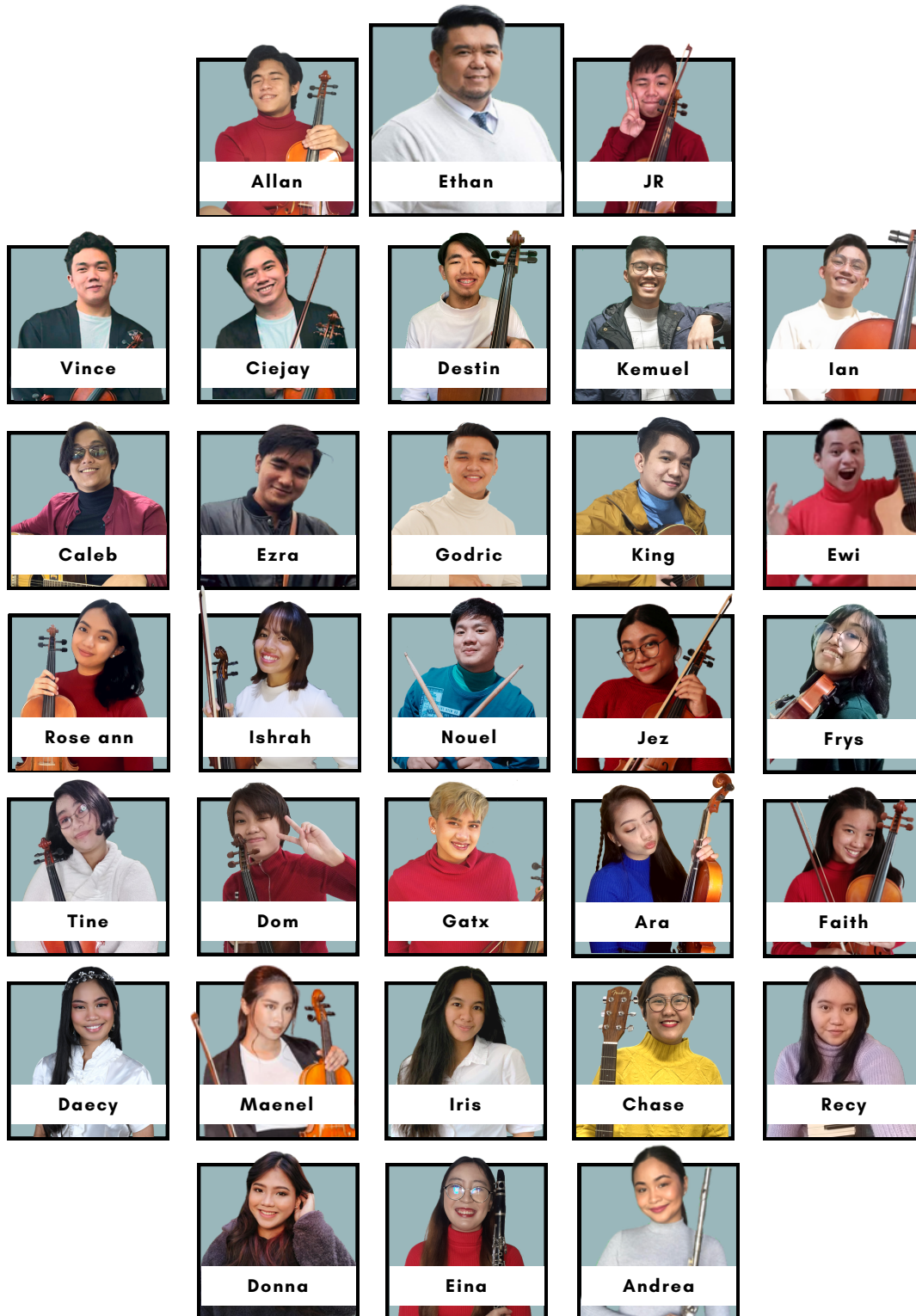
THE SAINT LOUIS UNIVERSITY CONCERT ORCHESTRA

The SLU Concert Orchestra is the resident orchestra of the Center for Culture and the Arts of Saint Louis University. Of the five performing groups of the CCA, the Concert Orchestra is the newest group which was formed in 2009. It was previously called the SLU Chamber Ensemble under the baton of Mr. Zamir Tabora and included less than 30 members playing the violin, viola, cello, and the flute. Gaining more members, their music was embraced still by their conductor, Mr. Tabora, for about two years. In 2011, the group experienced a lull with the expiration of Mr. Tabora's contract with the University.

In the year 2012, the group was reestablished and renamed as the SLU Concert Orchestra. With the addition of new members having the ability to play woodwind and brass instruments and along with the strings, the orchestra was thus formed. The baton has been handed down to a new and able conductor, in the person of Mr. Melvin M. Morillos. The group has expanded to 60 members and has continued to grow since then.

The members of the SLU Concert Orchestra, now under the baton of renowned musician Mr. Ethan Andrew C. Ventura, continue to share their great music to their audiences inside and outside of the confines of the university, and will continue to prevail as the group expands and starts to become widely known throughout the city of Baguio. To this day, the SLU Concert Orchestra, despite being the youngest group of the Center for Culture and Arts, continues to culminate as the heart of student musicians as more and more people continue to uplift the group as it holds a prominent figure in the university, and a growing presence at the northern Philippines.

THE SLU CONCERT ORCHESTRA MEMBERS



PERFORMANCES

August 2019 - July 2020

National Hospital Week 2019 at the Baguio General Hospital



REPERTOIRE**PARADISE**

ORIGINAL BY: COLDPLAY
ARRANGED BY: THE ROYAL PHILHARMONIC ORCHESTRA
TRANSCRIBED BY: ETHAN ANDREW VENTURA

THE AVENGERS MAIN THEME

ORIGINAL BY: ALAN SILVESTRI
ARRANGED BY: DOMINIC TADENA

IRIS

ORIGINAL BY: THE GOO GOO DOLLS
ARRANGED BY: ETHAN ANDREW VENTURA

DOC MARK'S BEATLES MEDLEY

ORIGINAL BY: THE BEATLES
ARRANGED BY: ETHAN ANDREW VENTURA

TADHANA

ORIGINAL BY: UP DHARMA DOWN
ARRANGED BY: ETHAN ANDREW VENTURA

MUSIC FROM ENCHANTED

MEDLEY BASED FROM THE MOVIE "ENCHANTED"
ARRANGED BY: JAMES KAZIK

Joseph and the Amazing Technicolor Dreamcoat



THE CENTER FOR CULTURE AND THE ARTS
OF SAINT LOUIS UNIVERSITY

JOSEPH
And the
AMAZING Technicolor DREAMCOAT
University Production

LYRICS BY
TIM RICE

MUSIC BY
ANDREW LLOYD WEBBER

FEATURING:

SLU GLEE CLUB	TANGHALANG SLU	SLU DANCE TROUPE	SLU CONCERT ORCHESTRA	SLU SYMPHONIC BAND	NPMS CHILDREN'S CHOIR
---------------	----------------	------------------	-----------------------	--------------------	-----------------------

EXECUTIVE PRODUCER: ETHAN ANDREW VENTURA. DIRECTION: KATHERINE NOBLEZA. CHOREOGRAPHY: SHERWIN SANTIAGO. MUSIC DIRECTION: NORMITA RIO-PABUCO. CONDUCTOR: ETHAN ANDREW VENTURA.
STAGE MANAGER: BENEDIX BACANI. DEPUTY STAGE MANAGERS: IVAN LANTANO, RUTH ANN DELOS SANTOS, JOE ANNE DONATO, AMBER ABELADOR. LIGHTS DESIGN: MARK ANTHONY ERICUZA.
COSTUMES: MELANIE CASTRO. SET DESIGN: JR. MALUBAY & JUDY DOMINGUEZ. PROPS: SHERIE DELA CRUZ. PROMOTIONS: DOMINIC TADENA, NIGEL LA MADRID, JEMINA DANE MARIA.

PLAY DATE: NOVEMBER 15, 2019 SHOWTIME: 7:00 PM VENUE: SLU CCA THEATER TICKET PRICE: 150 PHP

FOR TICKET INQUIRIES AND RESERVATIONS, VISIT OR CALL THE CCA OFFICE, SAINT LOUIS UNIVERSITY, BAGUIO CITY
TEL. NO. (074) 442-3043; 442-2793; 443-2001; 444-8246 TO 48 (LOCAL 255) | FAX: (074) 442-2842; 442-4288 | EMAIL ADDRESS: eacventura@slu.edu.ph



REPERTOIRE

LYRICS BY: TIM RICE
MUSIC BY: ANDREW LLOYD WEBBER
DIRECTED BY: KATHERINE NOBLEZA
MUSIC DIRECTION BY: NORMITA PABICO
PRODUCER: ETHAN VENTURA
CHOREOGRAPHER: SHERWIN SANTIAGO

DOCUMENTATION

Ibagiw: The Baguio Creative City Festival 2019

CITY OF BAGUIO
1909

TPBPH
TOURISM PROMOTIONS BOARD PHILIPPINES
in cooperation with

VICTORY LINER, INC.

HABI
The Philippine Textile Council

BOYSEN
The No. 1 PAINT

CONVERGE
ICT SOLUTIONS INC.

present

IBAGIW

THE BAGUIO CREATIVE CITY FESTIVAL 2019

MADE IN BAGUIO

November 16-24, 2019 at the Baguio Heritage Hill & Nature Park

FESTIVAL HIGHLIGHTS

OPENING GALA
November 16 at 3:00pm

MADE IN BAGUIO:
The Ibagiw Competitions in Crafts & Folk Art
Competition Proper: November 11-17
Exhibit of works: November 18-24

CREATIVE CITY MARKETPLACE
November 16-24

RE-IMAGINING BAGUIO
Installations Exhibit November 16-24
Short Films Screening November 18-22
Murals Exhibit November 17-24

JAMMING ON A G-STRING
A fashion show and live concert
November 22 at 7:00PM

IBAGIW: Culture Bearers of Baguio
A photo exhibit featuring selected portraits of Baguio's artists and artisans.
November 16-24

CLOSING GALA
November 24 at 3:00PM

Forums, artist talks, workshops, demonstrations, exhibits and performances by local and visiting artists.

For more details and the festival's calendar of events:

www.ibagiw.com

[/ibagiwfestival](https://www.facebook.com/ibagiwfestival)

[@ibagiw.festival](https://www.instagram.com/ibagiw.festival)

#ibagiwfestival
#madinbaguio
#baguiocreativity

UNESCO
United Nations Educational, Scientific and Cultural Organization

BAGUIO
Designated UNESCO Creative City # 2017

Media partners:
SunStar **7** **Radio**

QR Code

REPERTOIRE**PARADISE**

ORIGINAL BY: COLDPLAY

ARRANGED BY: THE ROYAL PHILHARMONIC ORCHESTRA

TRANSCRIBED BY: ETHAN ANDREW VENTURA

THE AVENGERS MAIN THEME

ORIGINAL BY: ALAN SILVESTRI

ARRANGED BY: DOMINIC TADENA

IRIS

ORIGINAL BY: THE GOO GOO DOLLS

ARRANGED BY: ETHAN ANDREW VENTURA

DOC MARK'S BEATLES MEDLEY

ORIGINAL BY: THE BEATLES

ARRANGED BY: ETHAN ANDREW VENTURA

TADHANA

ORIGINAL BY: UP DHARMA DOWN

ARRANGED BY: ETHAN ANDREW VENTURA

SA SALIW NG MGA GANGSA

COMPOSED BY: KARLO MARKO ALTOMONTE

ARRANGED BY: ETHAN ANDREW VENTURA

DOCUMENTATION

Glorious

THE CENTER FOR CULTURE AND THE ARTS
OF SAINT LOUIS UNIVERSITY

SAINT LOUIS UNIVERSITY
CONCERT ORCHESTRA
PRESENTS

Glorious

A SPECIAL CHRISTMAS CONCERT FROM THE RESIDENT CHORALE AND ORCHESTRA OF SAINT LOUIS UNIVERSITY
FEATURING THE ARTISTS OF THE SLU GLEE CLUB AND THE SLU CONCERT ORCHESTRA WITH THE SPECIAL PARTICIPATION OF THE NPMS CHILDREN'S CHOIR
BY THE MUSIC DIRECTION OF NORMITA RIO-PABlico AND ORCHESTRATION OF ETHAN ANDREW VENTURA

DECEMBER 06, 2019
SHOWTIME: 6:15 PM VENUE: SLU CCA THEATER
— FREE ADMISSION —

FOR INQUIRIES, VISIT OR CALL THE CCA OFFICE, SAINT LOUIS UNIVERSITY, BAGUIO CITY
TEL. NO. (074) 442-3043; 442-2793; 443-2001; 444-8246 TO 48 (LOCAL 255) | FAX: (074) 442-2842; 442-4288 | EMAIL ADDRESS: ccaeventura@slu.edu.ph

SCAN HERE TO GET UPDATES
WITH US ON FACEBOOK
@theccaofslu

REPERTOIRE**TRADITIONS OF CHRISTMAS**

ORIGINAL: TRADITIONAL CHRISTMAS SONGS
ARRANGED BY: STEPHEN BULLA

I SAW MOMMY KISSING SANTA CLAUS

ORIGINAL BY: TOMMIE CONNOR
ARRANGED BY: LARRY MOORE

CAROL OF THE BELLS

ORIGINAL: TRADITIONAL CHRISTMAS SONG
ARRANGED BY: MELVIN MORALLOS

SANA NGAYONG PASKO

ORIGINAL BY: ARIEL RIVERA
ARRANGED BY: MELVIN MORALLOS

GROWN-UP CHRISTMAS LIST

ORIGINAL BY: MICHAL BUBLÉ
ARRANGED BY: MELVIN MORALLOS

I SEE THE LIGHT

ORIGINAL BY: MANDY MOORE AND ZACHARY LEVI
ARRANGED BY: MELVIN MORALLOS

BELIEVE

ORIGINAL BY: JOSH GROBAN
ARRANGED BY: ETHAN ANDREW VENTURA

THIS IS MY WISH

ORIGINAL BY: KEVIN ROSS
ARRANGED BY: ETHAN ANDREW VENTURA

KUMUKUTITAP

ORIGINAL BY: RYAN CAYABYAB
ARRANGED BY: ETHAN ANDREW VENTURA

DOCUMENTATION



August 2020 - July 2021

International Cross Cultural Day 2020

UNIVERSITAS ATMA JAYA YOGYAKARTA

THE DIES NATALIS

INTERNATIONAL
CROSS CULTURAL DAY
2020

My Culture is My Life

TIME
4 P.M - DONE

date
21ST-22ND
SEPTEMBER 2020

PLACE
ZOOM.US

EXPLORE THE FOODIE!
ONLY IN MY COUNTRY!
TRADITIONAL ATTIRE OF MY COUNTRY!
VIRTUAL PERFORMANCES : VIRTUAL SINGING, DANCING, STORYTELLING

AND ANOTHER INTERESTING PERFORMANCES!

FURTHER INFORMATION
 UAJYINTERNATIONALDAY
 +62 812-4926-2565 (TATA)

REGISTRATION
<http://bit.ly/zoomregistrationICCD2020>

PRESENTED BY:
KANTOR KERJASAMA DAN PROMOSI

GET RP 50K DOORPRIZE FOR 3 LUCKY PARTICIPANTS

REPERTOIRE**CHINESE FOLK FANTASY**

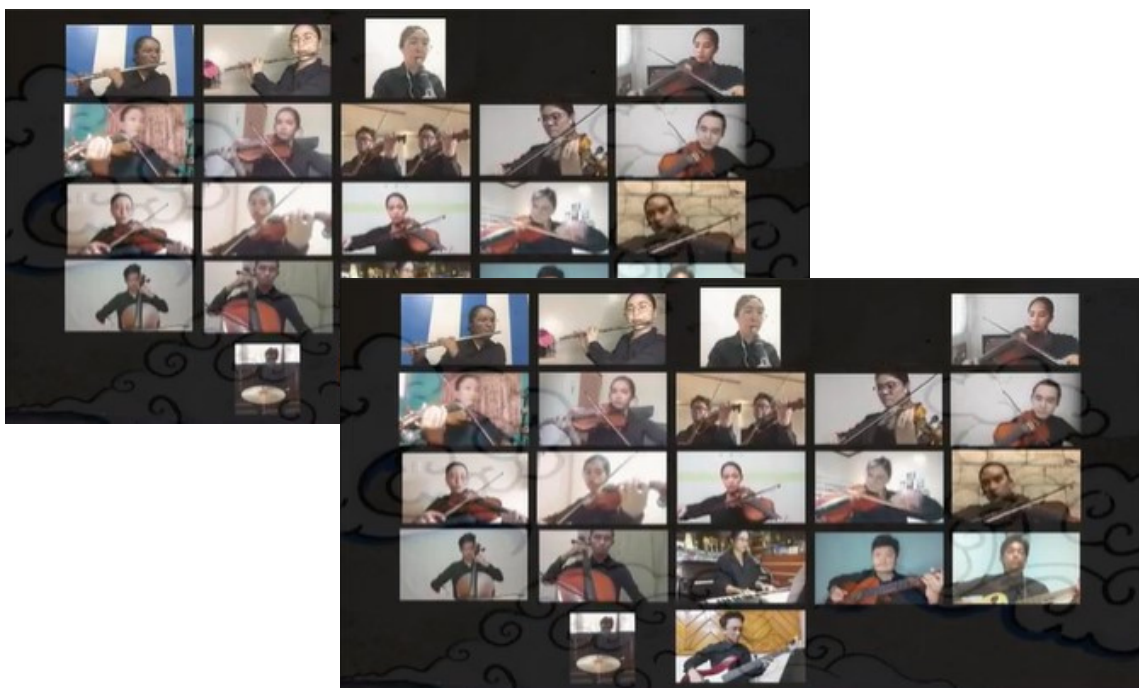
ORIGINAL BY: JAMES CURNOW

ARRANGED BY: HAL LEONARD ORCHESTRA

SAKURA, SAKURA

ORIGINAL: TRADITIONAL JAPANESE FOLK SONG

ARRANGED BY: LARRY CLARK

DOCUMENTATION

Indigenous Peoples Month 2020

SA SALIW NG MGA GANGSA

ORIGINAL BY: KARLO MARKO ALTOMONTE

ARRANGED BY: ETHAN ANDREW VENTURA



Hark!: The King Has Come!

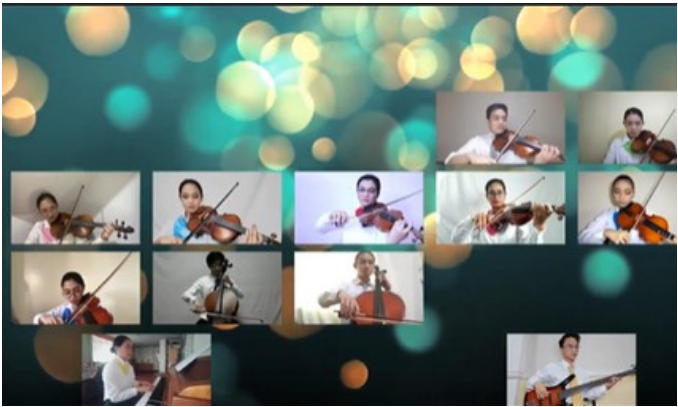
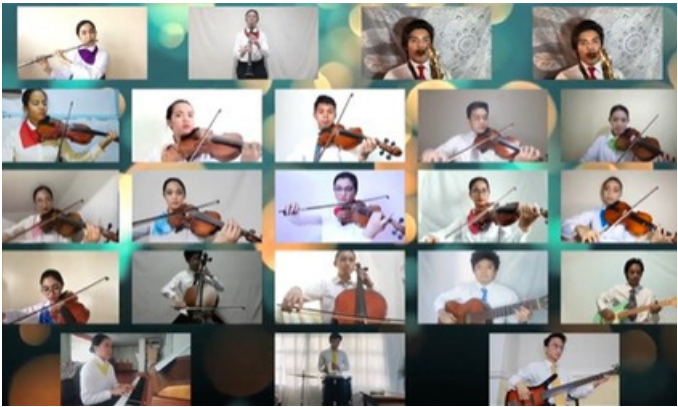
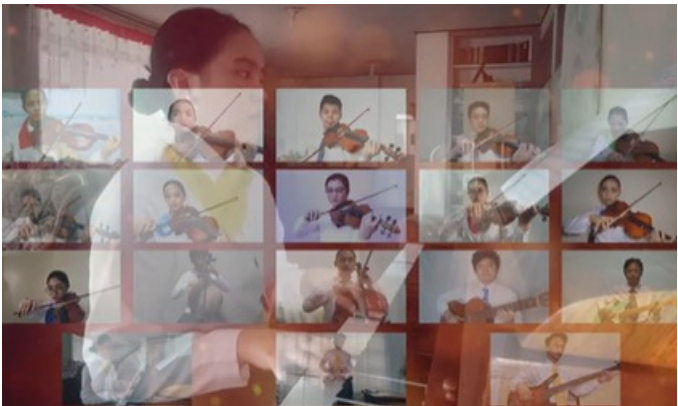
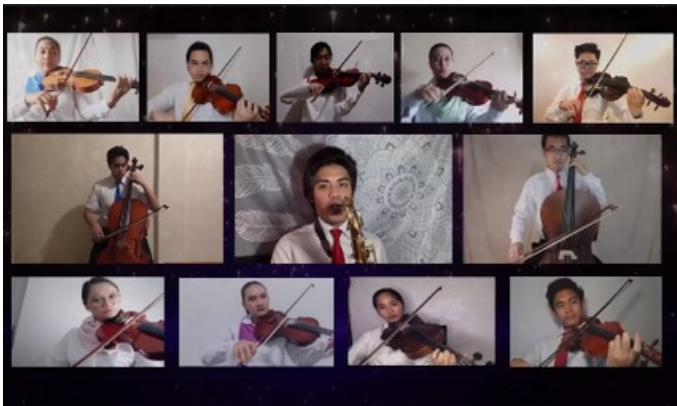


PIECES PERFORMED

TRADITIONS OF CHRISTMAS
ORIGINAL: TRADITIONAL CHRISTMAS SONGS
ARRANGED BY: STEPHEN BULLA

BELIEVE
ORIGINAL BY: JOSH GROBAN
ARRANGED BY: ETHAN ANDREW VENTURA

DOCUMENTATION



Supreme Court of the Philippines and Saint Louis University Contract Signing: A Partnership for Meaningful Bar Reforms

PERFORMERS

NYSA ACOSTA
VIOLIN I

JHAN RAY BARRIL
VIOLIN II

ALVIN THOR SAHAGUN
VIOLONCELLO

ETHAN ANDREW VENTURA
GUITAR



REPERTOIRE

*"ALL PIECES UNDER THIS REPERTOIRE ARE ARRANGED FOR QUARTET
(2 VIOLINS, CELLO, GUITAR)"*

BE OUR GUEST

FROM: BEAUTY AND THE BEAST
ARRANGED BY: ETHAN ANDREW VENTURA

HERE, THERE, EVERYWHERE

ORIGINAL BY: THE BEATLES
ARRANGED BY: ETHAN ANDREW VENTURA

IRIS

ORIGINAL BY: THE GOO-GOO DOLLS
ARRANGED BY: ETHAN ANDREW VENTURA

ISN'T SHE LOVELY

ORIGINAL BY: STEVIEW WONDER
ARRANGED BY: ETHAN ANDREW VENTURA

LA VIE EN ROSE

ORIGINAL BY: ÉDITH PIAF
ARRANGED BY: ETHAN ANDREW VENTURA

MOON RIVER

ORIGINAL BY: AUDREY HEPBURN
ARRANGED BY: ETHAN ANDREW VENTURA

AND I LOVE HER

ORIGINAL BY: THE BEATLES
ARRANGED BY: ETHAN ANDREW VENTURA

LET IT BE

ORIGINAL BY: THE BEATLES
ARRANGED BY: ETHAN ANDREW VENTURA

BESAME MUCHO

ORIGINAL BY: ÉDITH PIAF
ARRANGED BY: ETHAN ANDREW VENTURA

GAANO KO IKAW KAMAHAL

ORIGINAL BY: CELESTE LEGASPI
ARRANGED BY: ETHAN ANDREW VENTURA

OST VI: Anime Alliance



SYNOPSIS

The sixth installment in the OST series, and the first completely virtual concert of the group. Following the usual lineups, this show also included some new songs arranged by the resident artists of the group in addition to the classic OST lineup.

With the intricate orchestrations of the audience's favorite Anime series, the group hosted the concert via Facebook to ensure best-in-class viewing and listening experience.



16k views, 535 shares
SLU Concert Orchestra
Facebook Page

REPERTOIRE**KIMI GA SUKI DA TO SAKEBITAI**

FROM: SLAM DUNK

ORIGINAL BY: BAAD

ARRANGED BY: ETHAN ANDREW VENTURA

KIBOU NO UTA (SONG OF HOPE)

FROM: FOOD WARS

ORIGINAL BY: ULTRA TOWER

ARRANGED BY: DOMINIC TADENA

THE PROMISE OF THE WORLD

FROM: HOWL'S MOVING CASTLE

ORIGINAL BY: CHIEKO BAISHO

ARRANGED BY: YSABELA JAVIER

SMILE BOMB

FROM: GHOST FIGHTER

ORIGINAL BY: MATSUKO MAWATARI

ARRANGED BY: ETHAN ANDREW VENTURA

HIKARU NARA

FROM: YOUR LIE IN APRIL

ORIGINAL BY: GOOSE HOUSE

ARRANGED BY: THEISHTER (PIANO), AYASA (VIOLIN)

IMAGINATION

FROM: HAIKYUU!

ORIGINAL BY: SPYAIR

ARRANGED BY: DOMINIC TADENA

**IS THERE STILL A GRAND ESCAPE?
(A MASHUP OF "IS THERE STILL ANYTHING THAT LOVE CAN DO" AND
"GRAND ESCAPE")**

FROM: WEATHERING WITH YOU

ORIGINAL BY: RADWIMPS

ARRANGED BY: DOMINIC TADENA

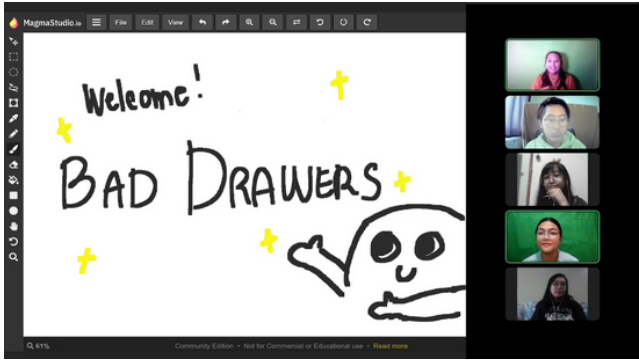
GURENGE

FROM: DEMON SLAYER

ORIGINAL BY: LISA

ARRANGED BY: YSABELA JAVIER

Documentations



August 2021 - July 2022

For Jasmin

SYNOPSIS

As one of the resident artists of the SLU Concert Orchestra was diagnosed with *Systemic Lupus Erythematosus (LEC)*, the SLU Concert Orchestra, along with guest artists, initiated a special benefit concert to show support and extend the spirit of giving. Inspired by the member's name, "For Jasmin" premiered on the official Facebook page of the SLU Concert Orchestra with an aim of collecting financial help for her fast recovery. On the night of the show, the audiences were able to witness talents that were not exclusive to an orchestra, such as singing, solo performances, and orchestral where the said member performed.



2.4k views, 104 shares
SLU Concert Orchestra
Facebook Page

REPERTOIRE**CHINESE FOLK FANTASY**

ORIGINAL BY: JAMES CURNOW
ARRANGED BY: HAL LEONARD ORCHESTRA

SAKURA, SAKURA

ORIGINAL: TRADITIONAL JAPANESE FOLK SONG
ARRANGED BY: LARRY CLARK

THE FLOWER DUET

FROM: LAKMÉ
ORIGINALLY COMPOSED BY: LÉO DELIBES
PERFORMED BY: ROSE ANN QUIANIO, NYSA ACOSTA
RECY JOY PADUA

ESTRELLITA

ORIGINALLY COMPOSED BY: MANUEL PONCE
PERFORMED BY: STEPHEN MILLAN

I CAN SEE CLEARLY NOW

ORIGINAL BY: JOHNNY NASH
ARRANGED & PERFORMED BY: PEPPER ALLEY (LIA & LIN-AWA
REOMA), AUBREY RABINO, ALVIN THOR SAHAGUN

PASALUBONG

ORIGINAL BY: BEN&BEN, MOILA DELA TORRE
ARRANGED & PERFORMED BY: ALLAN JR. TIANGCO

KIMI GA SUKI DA TO SAKEBITAI

FROM: SLAM DUNK
ORIGINAL BY: BAAD
ARRANGED BY: ETHAN ANDREW VENTURA

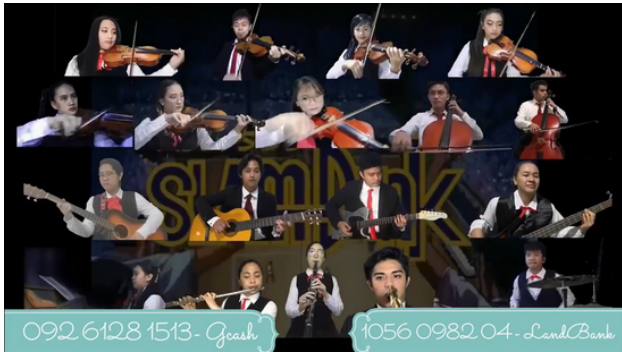
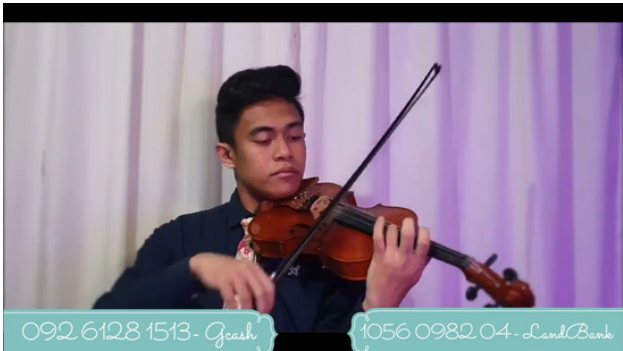
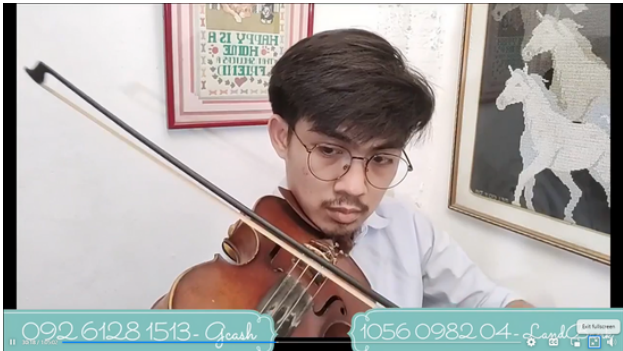
KIKI'S SONG

ORIGINAL BY: MREE
ARRANGED & PERFORMED BY: FREISCIANNE ABENJOJA,
JHAN RAY BARRIL, ISHRAH MAY CASTRO

IMAGINATION

FROM: HAIKYUU!
ORIGINAL BY: SPYAIR
ARRANGED BY: DOMINIC TADENA

Documentations



Buwan ng Wika 2021

GAANO KO IKAW KAMAHAL
ORIGINAL BY: CELESTE LEGASPI
ARRANGED BY: ETHAN ANDREW VENTURA

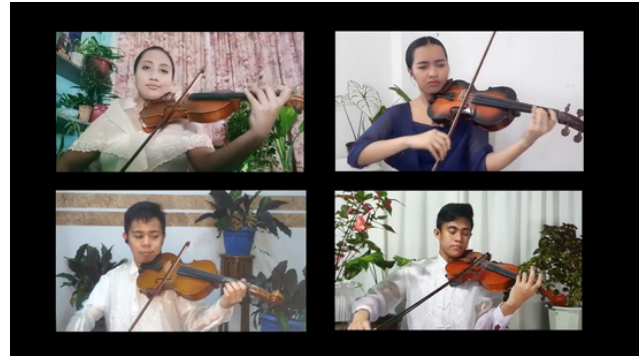
PERFORMERS

ROSE ANN QUIANIO
NYSA ACOSTA
VIOLIN I

ALLAN JR TIANGCO
JHAN RAY BARRIL
VIOLIN II

DESTIN DUPIANO
ALVIN THOR SAHAGUN
VIOLONCELLO

ETHAN ANDREW VENTURA
GUITAR



Saint Louis University 110 Years Foundation Anniversary: Tribute to CICM

LET IT BE
ORIGINAL BY: THE BEATLES
ARRANGED BY: ETHAN ANDREW VENTURA

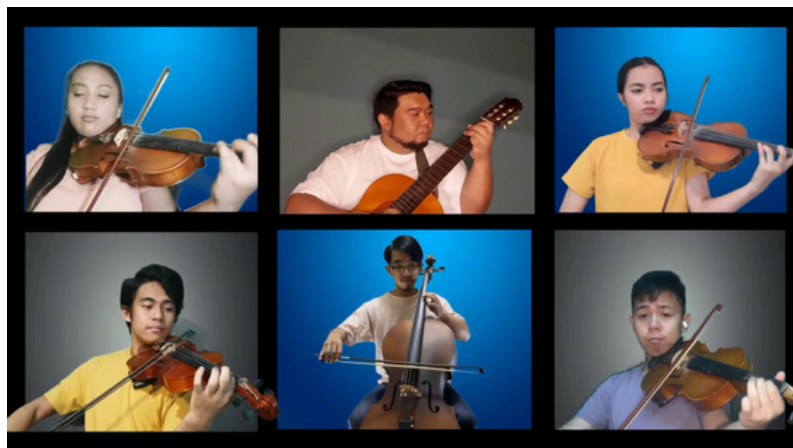
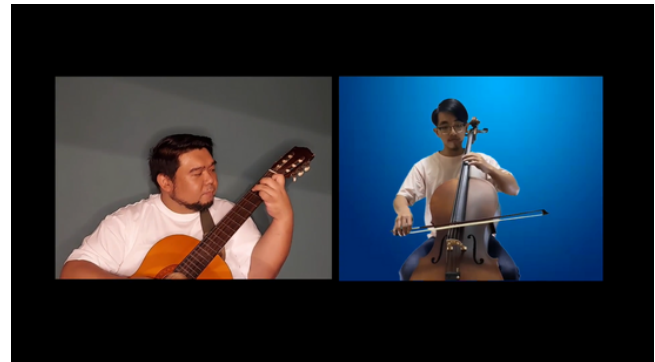
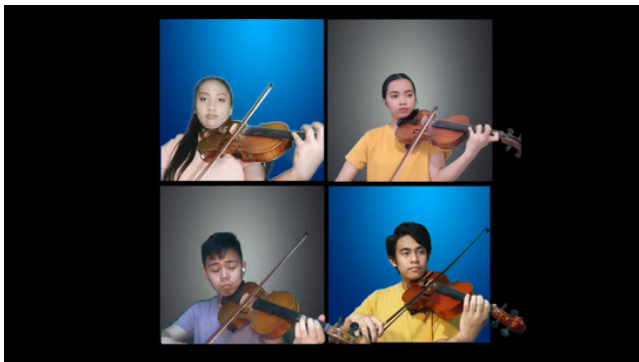
PERFORMERS

ROSE ANN QUIANIO
NYSA ACOSTA
VIOLIN I

ALLAN JR TIANGCO
JHAN RAY BARRIL
VIOLIN II

DESTIN DUPIANO
VIOLONCELLO

ETHAN ANDREW VENTURA
GUITAR



PANAGBENGA 2022 OPENING

PANAGBENGA OPENING

INSTRUMENTAL ARRANGEMENT BY: ETHAN ANDREW VENTURA
PERFORMED WITH THE SLU DANCE TROUPE & SLU
SYMPHONIC BAND

BAGANI

INSTRUMENTAL ARRANGEMENT BY: ETHAN ANDREW VENTURA
PERFORMED WITH THE SLU GLEE CLUB, SLU DANCE TROUPE
& SLU SYMPHONIC BAND



Montañosa Film Festival 2022

BAGANI

INSTRUMENTAL ARRANGEMENT BY: ETHAN ANDREW VENTURA
PERFORMED WITH THE SLU GLEE CLUB, SLU DANCE TROUPE
& SLU SYMPHONIC BAND



30th Sacerdotal Anniversary of
Rev. Fr. Gilbert B. Sales, CICM



REPERTOIRE**PARADISE**

ORIGINAL BY: COLDPLAY
ARRANGED BY: THE ROYAL PHILHARMONIC ORCHESTRA
TRANSCRIBED BY: ETHAN ANDREW VENTURA

THE AVENGERS MAIN THEME

ORIGINAL BY: ALAN SILVESTRI
ARRANGED BY: DOMINIC TADENA

IRIS

ORIGINAL BY: THE GOO GOO DOLLS
ARRANGED BY: ETHAN ANDREW VENTURA

DOC MARK'S BEATLES MEDLEY

ORIGINAL BY: THE BEATLES
ARRANGED BY: ETHAN ANDREW VENTURA

TADHANA

ORIGINAL BY: UP DHARMA DOWN
ARRANGED BY: ETHAN ANDREW VENTURA

GAANO KO IKAW KAMAHAL

ORIGINAL BY: CELESTE LEGASPI
ARRANGED FOR QUARTET BY: ETHAN ANDREW VENTURA

KAY GANDA NG ATING MUSIKA

ORIGINAL BY: RYAN CAYABYAB
ARRANGED BY: ETHAN ANDREW VENTURA

SAYO

ORIGINAL BY: SILENT SANCTUARY
ARRANGED BY: MELVIN MORALLOS

SINAG: Innovations In the Global Landscape

CHINESE FOLK FANTASY

ORIGINAL BY: JAMES CURNOW

ARRANGED BY: HAL LEONARD ORCHESTRA

SAKURA, SAKURA

ORIGINAL: TRADITIONAL JAPANESE FOLK SONG

ARRANGED BY: LARRY CLARK



Saint Louis University Service Awards 2022



REPERTOIRE

*"ALL PIECES UNDER THIS REPERTOIRE ARE ARRANGED FOR QUARTET
(2 VIOLINS, CELLO, GUITAR)"*

BE OUR GUEST

FROM: BEAUTY AND THE BEAST
ARRANGED BY: ETHAN ANDREW VENTURA

CAN YOU FEEL THE LOVE TONIGHT

FROM: THE LION KING
ARRANGED BY: ETHAN ANDREW VENTURA

IN MY LIFE

ORIGINAL BY: THE BEATLES
ARRANGED BY: ETHAN ANDREW VENTURA

TADHANA

ORIGINAL BY: UPDHARMADOWN
ARRANGED BY: ETHAN ANDREW VENTURA

THE EDGE OF GLORY

ORIGINAL BY: LADY GAGA
ARRANGED BY: ETHAN ANDREW VENTURA

HERE, THERE, EVERYWHERE

ORIGINAL BY: THE BEATLES
ARRANGED BY: ETHAN ANDREW VENTURA

IRIS

ORIGINAL BY: THE GOO-GOO DOLLS
ARRANGED BY: ETHAN ANDREW VENTURA

ISN'T SHE LOVELY

ORIGINAL BY: STEVIEW WONDER
ARRANGED BY: ETHAN ANDREW VENTURA

LA VIE EN ROSE

ORIGINAL BY: ÉDITH PIAF
ARRANGED BY: YSABELA JAVIER

REPERTOIRE**MOON RIVER**

FROM: BREAKFAST AT TIFFANY'S
ORIGINAL BY: AUDREY HEPBURN
ARRANGED BY: ETHAN ANDREW VENTURA

AND I LOVE HER

ORIGINAL BY: THE BEATLES
ARRANGED BY: ETHAN ANDREW VENTURA

BESAME MUCHO

ARRANGED BY: ETHAN ANDREW VENTURA

LET IT BE

ORIGINAL BY: THE BEATLES
ARRANGED BY: ETHAN ANDREW VENTURA

GAANO KO IKAW KAMAHAL

ORIGINAL BY: CELESTE LEGASPI
ARRANGED BY: ETHAN ANDREW VENTURA

PERFORMERS

ROSE ANN QUIANIO
VIOLIN I

ALLAN JR TIANGCO
VIOLIN II

DESTIN DUPIANO
VIOLONCELLO

ETHAN ANDREW VENTURA
GUITAR

50th Anniversary of Saint Aloysius Gonzaga Parish

ENSEMBLE (6 VIOLINS, 2 CELLOS, PIANO)

THEME (FROM "LOVE AFFAIR", 1994)
ORIGINAL BY: ENNIO MORRICONE
ARRANGED BY: ETHAN ANDREW VENTURA



PERFORMERS

ROSE ANN QUIANIO
JHAN RAY BARRIL
VIOLIN I

ALLAN JR TIANGCO
JUSTINE MAE MORALES
VIOLIN II

FRESICIANNE ABENOJA
ELIZA ESTHER FAITH NAFIANOG
VIOLIN III

DESTIN DUPIANO
KEMUEL RICHARD DIFUNTORUM
VIOLONCELLO

RECY JOY PADUA
PIANO

OST VII: Re:Assemble Time Skip Arc

SYNOPSIS

With its title, "OST VII Re:Assemble Timeskip arc," this show was a result of the group's hard work and perseverance despite the challenge of getting stuck in a virtual setting for two years. Being the seventh installment of the OST series, this show was created grandiosely as a resurgence of the full-fledged face-to-face performances and portrayal of growth in two years—that even with the unforeseen hindrances, the group was able to initiate growth.

With the special participation of the SLU Glee Club, the SLU Marching Band, and the alumni of the SLU Concert Orchestra, the group featured themes from classic and modern Anime series, movies, and iconic video games.



5.6k views, 186 shares
SLU Concert Orchestra
Facebook Page

REPERTOIRE**I CHOOSE YOU!**

FROM: POKEMON
ORIGINAL BY: JUNICHI MASUDA
ARRANGED BY: JEROME MARTINEZ

BLUE BIRD

FROM: NARUTO SHIPPUDEN
ORIGINAL BY: IKIMONO-GAKARI
ARRANGED BY: YSABELA JAVIER

ISABELLA'S LULLABY

FROM: THE PROMISED NEVERLAND
ORIGINAL BY: TAKAHIRO OBATA
ARRANGED BY: YSABELA JAVIER

REQUIEM DER MORGENRÖTE

FROM: ATTACK ON TITAN
ORIGINAL BY: LINKED HORIZON
ARRANGED BY: FREISCIANNE ABENOJA, CHASSEY RUIZ, JUSTINE MORALES

AO NO WALTZ

FROM: JOSEE, THE TIGER AND THE FISH
ORIGINAL BY: EVE
ARRANGED BY: FREISCIANNE ABENOJA & JUSTINE MORALES

COMBAT BENEATH THE WAVES

FROM: GENSIN IMPACT
ORIGINAL BY: HOYO-MIX AND YU-PENG CHENG
ARRANGED BY: ROSE ANN QUIANIO

GURENGE

FROM: DEMON SLAYER
ORIGINAL BY: LISA
ARRANGED BY: YSABELA JAVIER

COLORS

FROM: CODE GEASS
ORIGINAL BY: FLOW
ARRANGED BY: YSABELA JAVIER

DADDY! DADDY! DO!

FROM: KAGUYA-SAMA: LOVE IS WAR
ORIGINAL BY: MASAYUKI SUZUKI FT. AIRI SUZUKI
ARRANGED BY: YSABELA JAVIER

REPERTOIRE**WISHING**

FROM: RE:ZERO - STARTING LIFE IN ANOTHER WORLD
ORIGINAL BY: REM (CV. INORI MINASE) & HIGE DRIVER
ARRANGED BY: YSABELA JAVIER & FREISCIANNE ABENOJA

SMILE BOMB

FROM: GHOST FIGHTER
ORIGINAL BY: MATSUKO MAWATARI
ARRANGED BY: ETHAN ANDREW VENTURA

AGAIN

FROM: FULLMETAL ALCHEMIST: BROTHERHOOD
ORIGINAL BY: YUI
ARRANGED BY: FREISCIANNE ABENOJA

MERRY GO ROUND OF LIFE

FROM: HOWL'S MOVING CASTLE
ORIGINAL BY: JOE HISAISHI
ARRANGED BY: ETHAN ANDREW VENTURA

CHA-LA HEAD CHA-LA

FROM: DRAGON BALL Z
ORIGINAL BY: HIRONOBU KAGEYAMA
ARRANGED BY: ETHAN ANDREW VENTURA

KIMI GA SUKI DA TO SAKEBITAI

FROM: SLAMDUNK
ORIGINAL BY: BAAD
ARRANGED BY: ETHAN ANDREW VENTURA

DOCUMENTATION



ANTENA Internationalization and Globalization - Training of Trainers Conference

CHUA-AY

INSTRUMENTAL ARRANGEMENT BY: ETHAN ANDREW VENTURA
PERFORMED WITH THE SLU GLEE CLUB & SLU DANCE TROUPE

MERRY-GO-ROUND OF LIFE

FROM: HOWL'S MOVING CASTLE
ORIGINAL BY: JOE HISAISHI
ARRANGED BY: ETHAN ANDREW VENTURA



Saint Louis University Academic Session : Gawad San Luis For Employees and Tribute to The Retirees 2022

THE SAINT LOUIS UNIVERSITY CONCERT ORCHESTRA



PORTFOLIO 2019 - 2022

REPERTOIRE**LIBERTANGO**

ORIGINAL BY: ENNIO MORRICONE
ARRANGED BY: ETHAN ANDREW VENTURA

HOW FAR I'LL GO

FROM THE FILM: MOANA
ORIGINAL BY: AULI'I CRAVALHO
ARRANGED BY: ETHAN ANDREW VENTURA

MUSIC FROM THE ENCHANTED

MEDLY FROM THE FILM: THE ENCHANTED
ARRANGED BY: ETHAN ANDREW VENTURA

CAN'T STOP THE FEELING

ORIGINAL BY: JUSTIN TIMBERLAKE
ARRANGED BY: ETHAN ANDREW VENTURA

DOC MARK'S BEATLES MEDLEY

ORIGINAL BY: THE BEATLES
ARRANGED BY: ETHAN ANDREW VENTURA

DOCUMENTATION



Obramaestrang Piging sa Kaarawan ng Mahal Naming Father Gilbert



REPERTOIRE*ORCHESTRAL***HANGGANG SA DULO NG WALANG HANGGAN**

ORIGINAL BY: GARY VALENCIANO

ARRANGED BY: NORMITA "BING" RIO - PABLICO

MINSAN ANG MINAHAL AY AKO

ORIGINAL BY: RYAN CAYABYAB

ARRANGE BY: NORMITA "BING" RIO - PABLICO

*QUARTET***DUNGDUNGWEN KANTO**

TRADITIONAL ILOCANO SONG

ARRANGED BY: ETHAN ANDREW VENTURA

IKAW

ORIGINAL BY: MARTIN NIEVERA

ARRANGED BY: ETHAN ANDREW VENTURA

ARAW-GABI

ORIGINAL BY: RYAN CAYABYAB

ARRANGED BY: ETHAN ANDREW VENTURA

GAANO KO IKAW KAMAHAL

ORIGINAL BY: CELESTE LEGASPI

ARRANGED BY: ETHAN ANDREW VENTURA

TADHANA

ORIGINAL BY: UPDHARMADOWN

ARRANGED BY: ETHAN ANDREW VENTURA

DOCUMENTATION



