



**THE SLU**



**AUGUST 2019 TO JULY 2022 PORTFOLIO**



THE SAINT LOUIS  
UNIVERSITY  
**GLEE  
CLUB**





## Table of Contents

Center for Culture and the Arts History	1
The Saint Louis University Glee Club	3
The SLU Glee Club Members	4
Wedding Services	6
Caroling Functions	7
Liturgical Services	
Baccalaureate Mass of STELA	10
Virtual Baccalaureate Mass	11
Virtual Baccalaureate Mass	12
Thanksgiving Mass for Service Awardees Eucharistic Celebration	13
Thanksgiving Mass and Awarding Ceremony for SLU Retirees	14
66th Saint Louis University Commencement Exercises - Morning Rites	15
Commissioning Mass of the Solar Power of the SLU Mary Heights Campus	16
21st Sunday in Ordinary Time Virtual Eucharistic Celebration	17
26th Sunday in Ordinary Time Eucharistic Celebration	18
CEAP CAR 2021	19
Memorial of St. Leo the Great, Eucharistic Celebration	20
110th Saint Louis University Foundation Anniversary	21
1st Day of Aguinaldo Masses Eucharistic Celebration	22
3rd Sunday In Ordinary Time Eucharistic Celebration	23
8th Sunday In Ordinary Time Eucharistic Celebration	24
Ash Wednesday Eucharistic Celebration	25
Easter Sunday Of the Lord's Resurrection	26
Blessing of The Saint Louis University Sacred Heart Medical Center Chapel	27
30th Sacerdotal Anniversary of Rev. Fr. Gilbert B. Sales	28
Basic Education Masses	29
SLU Laboratory High School Graduation Mass of Batch Sinagtala	30

## Table of Contents

Celebration of the 50th Anniversary of Saint Aloysius Gonzaga Parish	31
Baccalaureate Mass Of SAMCIS	32
Baccalaureate Mass Of SEA	33
Baccalaureate Mass of SON	34
Baccalaureate Mass of SEA, STELA and SAS	35
Baccalaureate Mass of STELA	36
Baccalaureate Mass of SOM, SOL, and SNS	37
Baccalaureate Mass of SAMCIS, BS IT, and STELA	38
13th Sunday In Ordinary Time Eucharistic Celebration	39
44th Capping, Pinning, And Candle Lighting Ceremonies of SON	40
17th Sunday In Ordinary Time Eucharistic Celebration	41
Thanksgiving Mass Celebration	42
Thanksgiving Mass for the 60th Birthday of Rev. Fr, Gilbert Sales, CICM	43
<b>Performances</b>	
Joseph & the Amazing Technicolor Dream Coat	45
Glorious Special Concert	47
CICM Friendship Meet	49
I Believe Virtual Performance	51
Tribute to SLU Glee Club Graduates of Batch 2019-2020	53
Rev. Fr. Gilbert B Sales, CICM, B-day Celeb	55
Liyag-Baguio Day 2020	57
On Another Note: Jam For a Cause	59
Indigenous People's Month	61
Bedbed ja Namnama	63
109 SLU Founding Anniversary	65
12th SLU Lantern Parade Festival	67
Distansing: The SLU Glee Club Choir-antine Virtual Concert	69

## Table of Contents

UP Political Society: Diwa ng Pasko-Handog sa Pilipino	71
NPMS Tunes of Hope	73
Hark the King has Come	75
Alumni Talks: Gabfest CCA Edition	77
SLU Music Fest	79
Rev. Fr. Gilbert B. Sales Sacerdotal Anniversary	81
iCreate	83
We Sing Because: The SLU Glee Club Virtual Concert	85
Musiklasiks Volume 1: Awit At Indak	88
Musiklasiks Volume 2	92
On Another Note 2: Jam For A Cause Volume II	97
Pamanang Himig 2021	101
Glee-Sing Na! Christmas Concert 2021	103
Daniw Iti Ibag-Iw	106
Belgian Ambassador to the Philippines Michel Parts	109
The Dawn: Rise of The New Sound	111
SLU Arts Fest 2022	116
Sayaw Pilipinas	119
Sacerdotal of Father Gilbert Sales and The Visit Of Justice	121
Oyayi: Himig Ng Panibagong Bukas	124
Oathtaking Ceremonies for Successful 2021/22 Bar Candidates	128
Geodetic Engineers of the Philippines: 47th Annual National	130
SLU Service Awards	133
Feast of Saint Aloysius Gonzaga	135
29th ATC of the NACPAE	137
Oathtaking of the Newly Elected Officials	139
OST VII: Timeskip Arc	142

41st Annual National Convention Philippine Society of Psychologists	145
ANTENA ERASMUS	147
2022 Cordillera Day Celebration	149
Academic Session 2022: Gawad San Luis for Employees and Tribute to the Retirees	152
Birthday Salubong for Rev. Fr. Gilbert Sales, CICM	154
Obramaestrang Piging sa Kaarawan ng Mahal naming Father Sales	156



## CENTER FOR CULTURE AND THE ARTS HISTORY

The Center for Culture and the Arts was founded in May 1993 during the presidency of Fr. Joseph Van den Daelen, who believed that in addition to providing quality elementary, secondary, and tertiary education, SLU should also be a place where cultural heritage and the arts are preserved and perpetuated. The birth of the three resident performing groups of the center (Glee club, Dance troupe, and the Tanghalang SLU) was only once a dream, but with its fruition, the Center has enthralled the SLU and Baguio community with its first ever Broadway musical "The King and I in 1994." This memorable performance paved the way for the staging of other well-loved Broadway classics such as "The Sound of Music" in 1995, "West Side Story" in 1996, "The Fantasticks" in 1999, and school productions of the greatly popular and celebrated musicals "Les Miserables" in 2002 and 2003, and "Miss Saigon" in 2005. With the center's quest for a broader artistic spectrum came the venture to produce original Musicals and Dance Dramas such as "Ang Huling Paalam ni Rizal" in 1996, "Adivay" in 1997, "Gabriela Silang Isang Musikal" in 1998, "Dinulawan Ken Bagan" in 2000, "Pintakasi" and "The Tale of Kiwada" in 2001, and the rerun of "Gabriela Silang Isang Musikal" in 2003 and in 2004, "Once Upon a Window," a musical play. Still, with the center's aim of showcasing the creative facilities of its resident performing groups came their individual performances: The Dance Troupe, under Mrs. Rebecca Nulud as their trainer and choreographer, was featured in shows such as "Movements," "Let the Beat Control your Body," "Sayaw," "Kulturang Ginto," "Salanhi," "Ganito Kami Noon," and "Steps." With the CCA Children's Dance Troupe, recitals were held yearly since 1996. The Glee Club, under Mrs. Bing Pablico as their trainer and musical director, produced choral concerts such as "KKK (kantahan, kasiyahan alay sa Kalayaan)," "MB (Music Breakthrough)," and the cantatas such as "The Word," "SLU Glee Club Christmas Special," "A Christmas Dream," "An Evening in December," and the "Rhythms Unplugged at the Lobby." The Tanghalang SLU, under Mr. Dan Rommel Riopay as the trainer and director, opens its theatre season every school year staging productions from drama to comedy to farce, and contemporary to satirical plays of the best known Filipino and foreign playwrights such as "Andres Bonifacio-Anak ng Bayan," "Tribute to Guerrero," "Home Honey I'm Hi," "The Show Must Go On," "The Ugly Duckling and the Frog Prince," "Walang Sugat," "The Boor," "Sham," "Aling Poleng," "Flores Para Los Muertos," "Ang Paglilitis ni Mang Serapio," "Madonna," "Pitong Taon," "The Word is an Apple," and "The Signs of the Sea Gulls." The resident groups of artists are also significantly involved in the school's activities. They take charge of the annual arts festival in music, dance and drama which take place during the National arts month. Moreover, their expertise in their respective crafts have brought them opportunities to perform not only outside of the city, but also out of the country.

## CENTER FOR CULTURE AND THE ARTS HISTORY

The CCA Performing Group had a rare chance of presenting "The Tale of Kiwada" in 2002 and "The Nine Fathers" in 2007 in St. Mary's University in Bayombong, Nueva Vizcaya and the Saint Louis College in La Union. In 2000, the SLU Glee Club and Dance Troupe were invited on their first ever international performance tour to California USA, where they staged "Dinulawan ken Bagan" and "Paskuhan," delighting foreign audiences with their dynamic take on Cordilleran culture, and bringing a taste of home and nostalgia to the Filipino-American audience. In 2004, they performed "The Tale of Kiwada" and "Fiesta: Philippine Folk songs and dances" in the three campuses of Jinan University in Guangzhou, China and in 2011 in Brussels, Kortrijk and Ghent campus of KUL Katholieke Universiteit Leuven and in the different Parishes of Belgium. To top it all, the Dance Troupe, the Glee Club and the Tanghalang SLU are consistent winners of major awards in several competitions. The Dance Troupe was inducted to the Hall of Fame in the Panagbenga Streetdancing in 2004, Champion in the Sayaw Pinoy National Dance Competition in the Contemporary and Philippine Folk Dance Category in 2012, the Glee Club was the Grand Prize Winner for two consecutive years in the Saniweng Competition and Grand Champion in 2005 in NAMCYA (National Music Competition for Young Artists), the most prestigious choral competition in the country and the Tanghalang SLU as Hall of Fame awardee as Best Cultural Group given by Aliw Awards 2015. Needless to say, all performances of the resident groups of the CCA, honed through years of diligence, rigor, and dedication to their art, have reaped astounding positive response and numerous accolades, truly a testimony of the exemplary capabilities of both its mentors and members. The center has also widened its branches and created their youngest performing group, the SLU Concert Orchestra upon the initiative of Fr. Jessie Hechanova in 2008. Originally named the SLU String Ensemble which had 16 members, at present, the orchestra has 50 members and 5 sections. In 2013, CCA has also included the prestigious SLU Marching Band as its fifth resident group, and is now known as the SLU Symphonic Band.

## THE SAINT LOUIS UNIVERSITY GLEE CLUB

The SLU Glee Club (Saint Louis University Glee Club) is the resident choral performing group of the Center for Culture and the Arts of Saint Louis University since 1993. Established in 1993 by Mr. Norman Moredo, the group is comprised of students coming from the different schools of the university. In 1997, the group started to train under the tutelage of Normita Rio-Pablico up to present.

With its aim to harness and optimize the potential of both the student-artist as well as the educators and provide its audience with excellent choral experiences that include an array of repertoire from traditional, classical, ethnic, religious, pop and contemporary, the group continues to work on its different commitment to perform despite the ongoing challenges brought about by the present pandemic that is being experienced globally.

To date, the group has an array of achievements that speaks of its calibre as a choral group. In 2003, it won second place in the WOW Philippines, Best of the Best Choral Competitions held in Intramuros Manila. Gaining inspiration from the victory, the group continued to compete and won the following: 1st Prize, National Music Competitions for Young Artists (CCP Manila-2005); 2nd Prize, National Music Competitions for Young Artists (CCP Manila-2009); 2nd Prize Manila Broadcasting Choral Competitions (Aliw Theater, Manila-2009); 1st Prize Manila Broadcasting Choral Competitions (Aliw Theater, Manila-2010); 2nd Prize Manila Broadcasting Choral Competitions (Aliw Theater, Manila-2011); Grand Champion for Mixed Category and Folklore in the Asia Pacific Choir Games (Manado, Indonesia-2013); Gold Medalist and Grand Prix Finalist in the 9th Fukushima Vocal Ensemble (Fukushima, Japan-2015); Bronze Medalist in the Mixed Category of the Busan Choral Competitions and Festival (Busan, Korea-2018). In 2015, the SLUGC was also a recipient in the prestigious Ani ng Dangkal awarded in Manila.

Since 1993, the dedication and hard work of the SLUGC is seen in the several successful concerts that the group mounts not to mention the other singing engagements in the University, City of Baguio and other places where they are invited to perform. The SLUGC sustained its choral and artistic excellence and is considered to be one of the best choirs in the Philippines.

In recent years, the SLUGC along with the SLU Dance Troupe has had the opportunity to travel outside the country for cultural presentations. They graced key cities of San Francisco, Los Angeles and Las Vegas in the United States in 2001; Jinan Universities in Guangzhou China in 2004 and CICM venues in Belgium Europe in 2011.

The group also collaborates with the different performing groups at the Center for Culture and the Arts in its presentation on different musicals. Among them are original Dance Dramas and Musicals by Dan Riopay, Peejay Bengwasan and Normita Pablico exclusively written for the CCA: The Tale of Kiwada; Dinulawan Ken Bugan; Adivay; Pintakasi; Gabriela Silang, Isang Musikal; The Nine Fathers; Once Upon a Window; The Little Glass Slipper; Ramayana and Epiko. Other Musicals that were staged at the CCA were Miss Saigon, Les Miserables, The Sound of Music, The West Side Story, Joseph and the Amazing Technicolor Dreamcoat; Once on this Island and The King and I. This feature of the Center for Culture and Arts makes it a relevant seat of arts in Baguio City. This has also paved the way for the Center to produce phenomenal stage actors.

The life of the members of the SLU Glee Club represents habitual routines. They have learned to embrace the meticulous system on learning one single piece - from the individual sectionals to the group sectionals before they are patiently put together by their trainer during tutti rehearsals. It is a painstaking routine. All pieces undergo the same process. All of which result to the profoundness of a choral masterpiece enjoyed by an audience in one musical experience.



THE SLU GLEE CLUB  
MEMBERS

THE SAINT LOUIS UNIVERSITY GLEE CLUB



PORTFOLIO 2019-2022



# GLEE CLUB ACTIVITIES

## WEDDING



## CAROLING





DOCUMENTATIONS





# LITURGICAL SERVICES

## BACCALAUREATE MASS OF THE SCHOOL OF TEACHER EDUCATION AND LIBERAL ARTS



SLU PRINCE BERNHARD GYMNASIUM

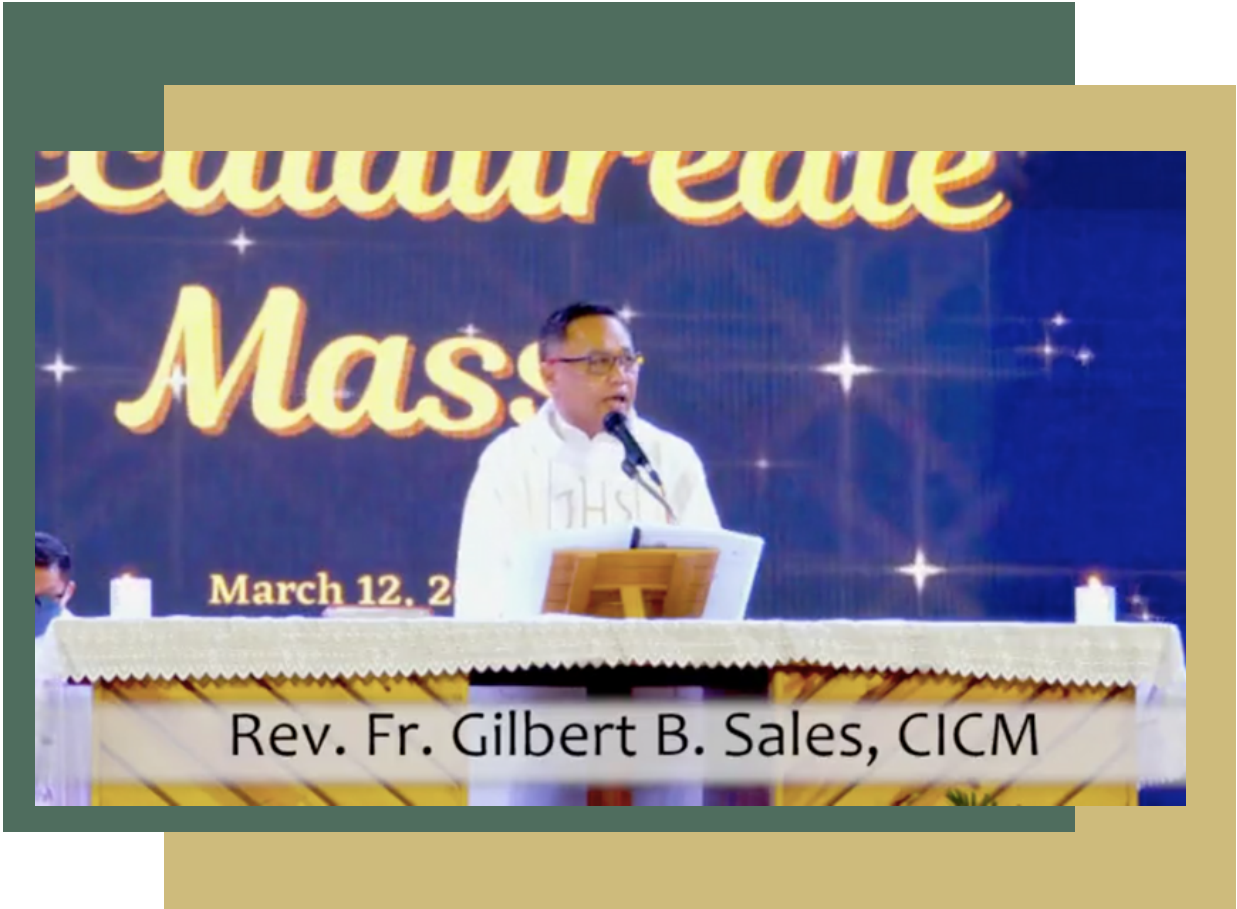
## VIRTUAL BACCALAUREATE MASS



MASS PRESIDERS:  
REV. FR. GILBERT B. SALES, CICM  
PRESIDENT OF SLU

SAINT ALOYSIUS GONZAGA PARISH  
377 COMMENTS, 27K VIEWS

VIRTUAL BACCALAUREATE  
MASS



MASS PRESIDED BY:  
REV. FR. GILBERT B. SALES, CICM  
PRESIDENT OF SLU

SAINT ALOYSIUS GONZAGA PARISH  
377 COMMENTS, 27K SHARES



## THANKSGIVING MASS FOR SERVICE AWARDEES EUCCHARISTIC CELEBRATION



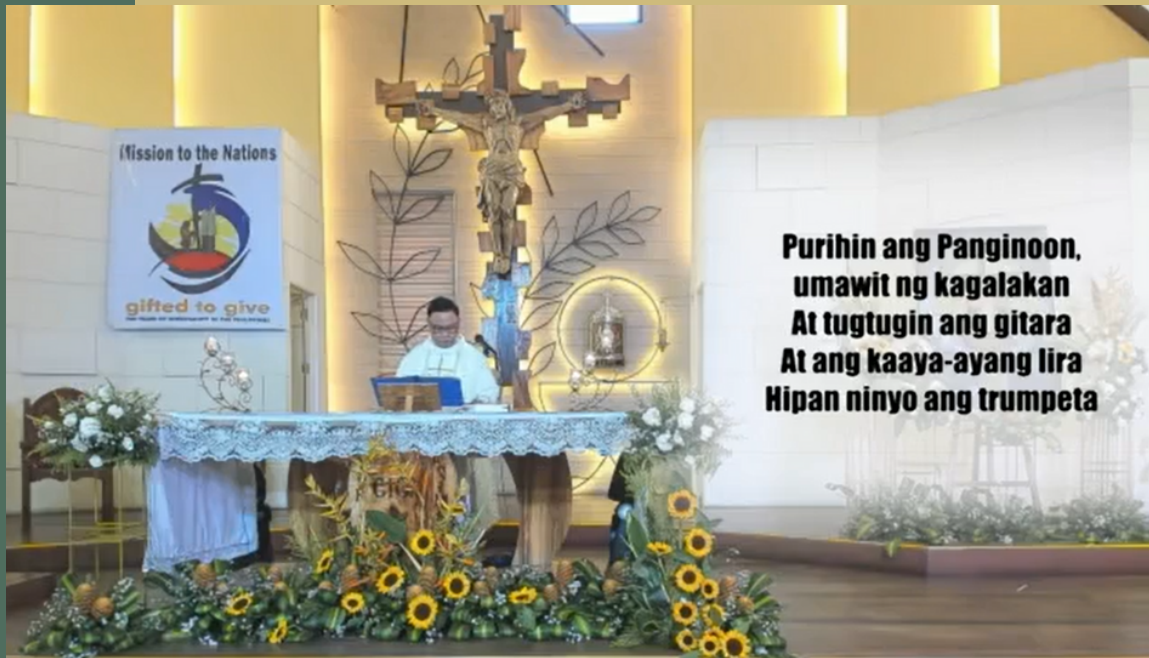
Rev. Fr. Gilbert B. Sales, CICM



MASS PRESIDER:  
REV. FR. GILBERT B. SALES, CICM  
PRESIDENT OF SLU

SAINT ALOYSIUS GONZAGA PARISH  
47 COMMENTS, 6.7K VIEWS

## THANKSGIVING MASS AND AWARDING CEREMONY IN HONOR OF THE 2020 AND 2021 SLU RETIREES



MASS PRESIDER:  
REV. FR. GILBERT B. SALES, CICM  
PRESIDENT OF SLU

SAINT ALOYSIUS GONZAGA PARISH  
31 COMMENTS, 2.9K VIEWS

# THE 66TH SAINT LOUIS UNIVERSITY COMMENCEMENT EXERCISES - MORNING RITES



MASS PRESIDED BY:  
REV. FR. GILBERT B. SALES, CICM  
PRESIDENT OF SLU

SAINT ALOYSIUS GONZAGA PARISH  
77 COMMENTS, 6.9K VIEWS

## COMMISSIONING MASS OF THE SOLAR POWER OF THE SLU MARY HEIGHTS CAMPUS, BAKAKENG



SLU MARY HEIGHTS CAMPUS, BAKAKENG



## 21ST SUNDAY IN ORDINARY TIME VIRTUAL EUCHARISTIC CELEBRATION



MASS PRESIDER:  
REV. FR. GILBERT B. SALES, CICM  
PRESIDENT OF SLU

SAINT ALOYSIUS GONZAGA PARISH  
10 COMMENTS, 4.5K VIEWS

## 26TH SUNDAY IN ORDINARY TIME EUCCHARISTIC CELEBRATION



MASS PRESIDED BY:  
REV. FR. GILBERT B. SALES, CICM  
PRESIDENT OF SLU

SAINT ALOYSIUS GONZAGA PARISH  
157 COMMENTS, 9.K VIEWS

**CEAP CAR 2021 VIRTUAL REGIONAL ASSEMBLY  
PRESENCE AS PRESENTS: ENHANCING OUR EVANGELIZING MISSION BY  
INSPIRING, WITNESSING, AND SANCTIFYING  
EUCCHARISTIC CELEBRATION**



MASS PRESIDER:

MOST REV. FR. VALENTIN C. DIMOC, D.D  
VICAR APOSTOLIC OF BONTOC-LAGawe

SAINT ALOYSIUS GONZAGA PARISH  
22 COMMENTS, 3.3K VIEWS

# MEMORIAL OF ST. LEO THE GREAT, POPE AND DOCTOR OF THE CHURCH EUCCHARISTIC CELEBRATION



MASS PRESIDED BY:  
REV. FR. MACWAYNE M. MANIWANG, CICM  
VP FOR MISSION AND IDENTITY

SAINT ALOYSIUS GONZAGA PARISH  
26 COMMENTS, 1.9 K VIEWS



**110TH SAINT LOUIS UNIVERSITY FOUNDATION ANNIVERSARY:  
“LIGHT OF THE NORTH GIFTED TO GIVE”  
&  
159TH CICM FOUNDATION ANNIVERSARY: “BUILDING WISDOM”  
EUCCHARISTIC CELEBRATION**



MASS PRESIDER:  
REV. FR. GILBERT B. SALES, CICM  
PRESIDENT OF SLU  
WITH PRESIDERS

GIANT STEPS GROUNDS  
2.2K COMMENTS, 25K VIEWS

## 1ST DAY OF AGUINALDO MASSES EUCCHARISTIC CELEBRATION



MASS PRESIDER:  
REV. FR. GILBERT B. SALES, CICM  
PRESIDENT OF SLU

SAINT ALOYSIUS GONZAGA PARISH  
NO VIDEO OR LINK

## 3RD SUNDAY IN ORDINARY TIME EUCCHARISTIC CELEBRATION



MASS PRESIDER:  
REV. FR. ROGER BRIGENTE MONTECALVO, CICM

SAINT ALOYSIUS GONZAGA PARISH  
575 COMMENTS, 6.1K VIEWS



## 8TH SUNDAY IN ORDINARY TIME EUCCHARISTIC CELEBRATION



MASS PRESIDED BY:  
REV. FR. GILBERT B. SALES, CISM  
PRESIDENT OF SLU

SAINT ALOYSIUS GONZAGA PARISH  
756 COMMENTS, 7.5K VIEWS

## ASH WEDNESDAY EUCCHARISTIC CELEBRATION



MASS PRESIDERS:

REV. FR. GILBERT B. SALES, CICM  
PRESIDENT OF SLU WITH PRESIDERS

GIANT STEP GROUNDS  
1.4K COMMENTS, 19K VIEWS



## EASTER SUNDAY OF THE LORD'S RESURRECTION



MASS PRESIDED BY:  
REV. FR. MACWAYNE N. MANIWANG, CICM  
VICE-PRESIDENT FOR MISSION AND IDENTITY

SAINT ALOYSIUS GONZAGA PARISH  
379 COMMENTS, 4.9K VIEWS

## BLESSING OF THE SAINT LOUIS UNIVERSITY SACRED HEART MEDICAL CENTER CHAPEL



SAINT LOUIS UNIVERSITY  
SACRED HEART MEDICAL CENTER CHAPEL  
206 INTERACTIONS, 7 COMMENTS, 20 SHARES

# 30TH SACERDOTAL ANNIVERSARY OF REV. FR. GILBERT B. SALES EUCCHARISTIC CELEBRATION



MASS PRESIDERS:  
REV. FR. GILBERT B. SALES, CISM  
PRESIDENT OF SLU

SLU PRINCE BERNHARD GYMNASIUM  
76 COMMENTS, 2.9K VIEWS



## BASIC EDUCATION BACCALAUREATE MASSES



MASS PRESIDER:



REV. FR. GILBERT B. SALES, CICM  
PRESIDENT OF SLU

SLU PRINCE BERNHARD GYMNASIUM  
76 COMMENTRS, 2.9K VIEWS

## SLU LABORATORY HIGH SCHOOL GRADUATION MASS OF BATCH SINAGTALA



MASS PRESIDERS:

REV. FR. MACWAYNE N. MANIWANG, CICM  
VICE-PRESIDENT FOR MISSION AND IDENTITY

PRINCE BERNHARD GYMNASIUM  
3 COMMENTS, 4.4K VIEWS



## CELEBRATION OF THE 50TH ANNIVERSARY OF SAINT ALOYSIUS GONZAGA PARISH



MASS PRESIDED:  
REV. FR. GILBERT B. SALES, CICM  
PRESIDENT OF SLU

SAINT ALOYSIUS GONZAGA PARISH  
1K COMMENTS, 11K VIEWS

# BACCALAUREATE MASS OF THE SCHOOL OF ACCOUNTANCY, MANAGEMENT, COMPUTING, AND INFORMATION STUDIES



MASS PRESIDER:  
REV. FR. MACWAYNE N. MANIWANG, CICM  
VICE-PRESIDENT FOR MISSION AND IDENTITY

PRINCE BERNHARD GYMNASIUM  
2 COMMENTS, 8.4K VIEWS

# BACCALAUREATE MASS OF THE SCHOOL OF ENGINEERING AND ARCHITECTURE (BS ARCH, BSCE, BSCE, BSEE, BSECE, BSGE)



MASS PRESIDER:

REV. FR. MACWAYNE N. MANIWANG, CICM  
VICE-PRESIDENT FOR MISSION AND IDENTITY

PRINCE BERNHARD GYMNASIUM  
5.7K VIEWS



## BACCALAUREATE MASS OF THE SCHOOL OF NURSING



MASS PRESIDED BY:  
REV. FR. MACWAYNE N. MANIWANG, CICM  
VICE-PRESIDENT FOR MISSION AND IDENTITY

PRINCE BERNHARD GYMNASIUM  
1 COMMENT, 7.9K VIEWS

## BACCALAUREATE MASS OF SEA, STELA, AND SAS



MASS PRESIDER:

REV. FR. MACWAYNE N. MANIWANG, CICM  
VICE-PRESIDENT FOR MISSION AND IDENTITY

PRINCE BERNHARD GYMNASIUM  
1 COMMENTS, 3.3K VIEWS



## BACCALAUREATE MASS OF THE SCHOOL OF TEACHER EDUCATION AND LIBERAL ARTS



MASS PRESIDER:  
REV. FR. MACWAYNE N. MANIWANG, CICM  
VICE-PRESIDENT FOR MISSION AND IDENTITY

PRINCE BERNHARD GYMNASIUM  
4 COMMENTS, 3.6K VIEWS

# BACCALAUREATE MASS OF THE SCHOOL OF MEDICINE, SCHOOL OF LAW, AND SCHOOL OF NATURAL SCIENCES (BS BIOLOGY & BS PHARMACY)



MASS PRESIDER:  
REV. FR. MACWAYNE N. MANIWANG, CICM  
VICE-PRESIDENT FOR MISSION AND IDENTITY

PRINCE BERNHARD GYMNASIUM  
5 COMMENTS, 4.5K VIEWS

**BACCALAUREATE MASS OF THE SCHOOL OF  
ACCOUNTANCY, MANAGEMENT, COMPUTING, AND  
INFORMATION STUDIES (BSBA, BSBA ENTREP, BSCS,  
BSIT, & BS MATH) AND SCHOOL OF TEACHER  
EDUCATION AND LIBERAL ARTS (BA PHILO & BSSW)**



MASS PRESIDER:  
REV. FR. MACWAYNE N. MANIWANG, CICM  
VICE-PRESIDENT FOR MISSION AND IDENTITY

PRINCE BERNHARD GYMNASIUM  
7 COMMENTS, 3.8K VIEWS



## 13TH SUNDAY IN ORDINARY TIME EUCCHARISTIC CELEBRATION



MASS PRESIDERS:  
REV. FR. MACWAYNE N. MANIWANG, CICM  
VICE-PRESIDENT FOR MISSION AND IDENTITY

SAINT ALOYSIUS GONZAGA PARISH  
218 COMMENTS, 3K VIEWS



## 44TH CAPPING, PINNING, AND CANDLE LIGHTING CEREMONIES OF SON



MASS PRESIDER:  
REV. FR. MACWAYNE N. MANIWANG, CICM  
VICE-PRESIDENT FOR MISSION AND IDENTITY

PRINCE BERNHARD GYMNASIUM  
NO VIDEO OR LINK

## 17TH SUNDAY IN ORDINARY TIME EUCCHARISTIC CELEBRATION



MASS PRESIDERS:

REV. FR. MACWAYNE N. MANIWANG, CICM  
VICE-PRESIDENT FOR MISSION AND IDENTITY

SAINT ALOYSIUS GONZAGA PARISH  
104 COMMENTS, 828 VIEWS

## THANKSGIVING MASS CELEBRATION



MASS PRESIDER:  
REV. FR. GILBERT B. SALES, CICM  
PRESIDENT OF SLU

GIANT STEPS GROUND  
121 COMMENTS, 3.3K VIEWS



## THANKSGIVING MASS FOR THE 60TH BIRTHDAY OF REV. FR. GILBERT B. SALES, CICM



MASS PRESIDER:  
REV. FR. GILBERT B. SALES, CICM  
PRESIDENT OF SLU

PRINCE BERNHARD GYMNASIUM  
20 COMMENTS, 851 VIEWS

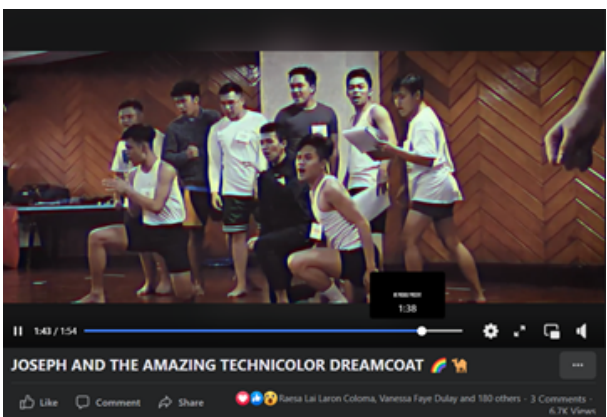
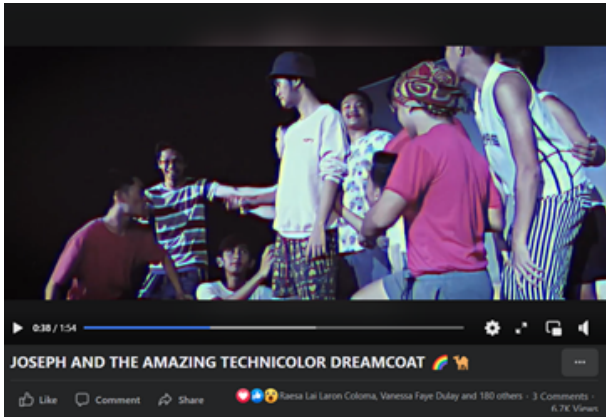
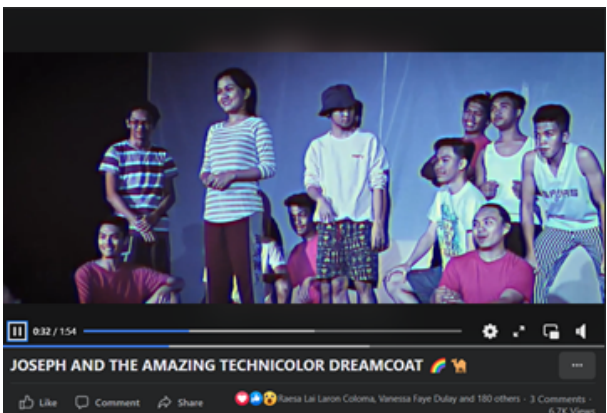
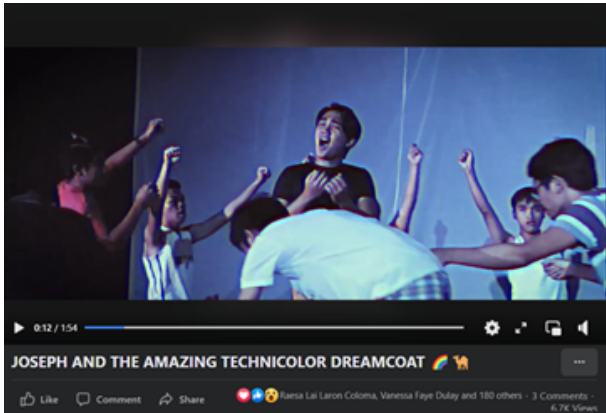


# PERFORMANCES

JOSEPH AND THE AMAZING TECHNICOLOR DREAMCOAT



DOCUMENTATIONS

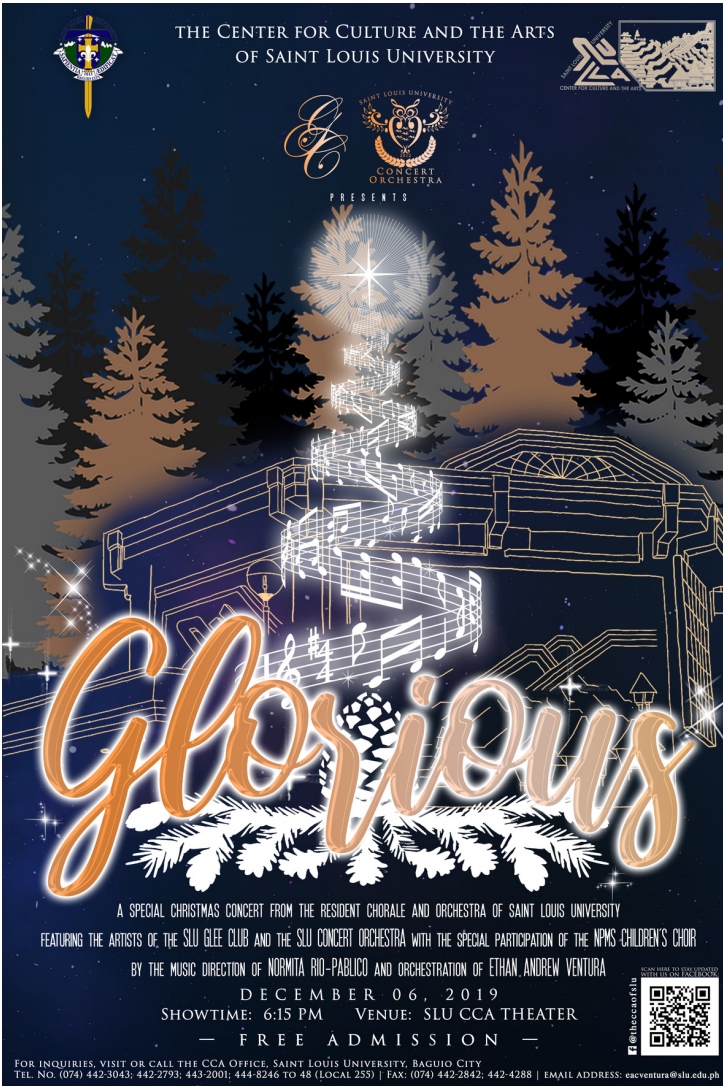


REPERTOIRE

LYRICS BY: TIM RICE  
MUSIC BY: ANDREW LLOYD WEBBER  
DIRECTED BY: KATHERINE NOBLEZA  
MUSIC DIRECTION BY: NORMITA PABLICO  
PRODUCER: ETHAN VENTURA  
CHOREOGRAPHER: SHERWIN SANTIAGO

SLU CCA THEATER

GLORIOUS CHRISTMAS COLLAB CONCERT





**DOCUMENTATIONS**

A SPECIAL CHRISTMAS CONCERT FROM THE RESIDENT CHORALE  
AND ORCHESTRA OF SAINT LOUIS UNIVERSITY  
FT. SLUGC, CO WITH THE SPECIAL PARTICIPATION  
OF THE NPMS CHILDREN'S CHOIR

**REPERTOIRE**

MUSIC DIRECTION OF MRS NORMITA "BING" RIO-PABLICO  
ORCHESTRATION: MR ETHAN ANDREW VENTURA

**SLU CCA THEATER**  
FREE ADMISSION

CICM FRIENDSHIP MEET





DOCUMENTATIONS



SAINT MARY'S UNIVERSITY  
NUEVA VIZCAYA

REPERTOIRE

INTO THE UNKNOWN

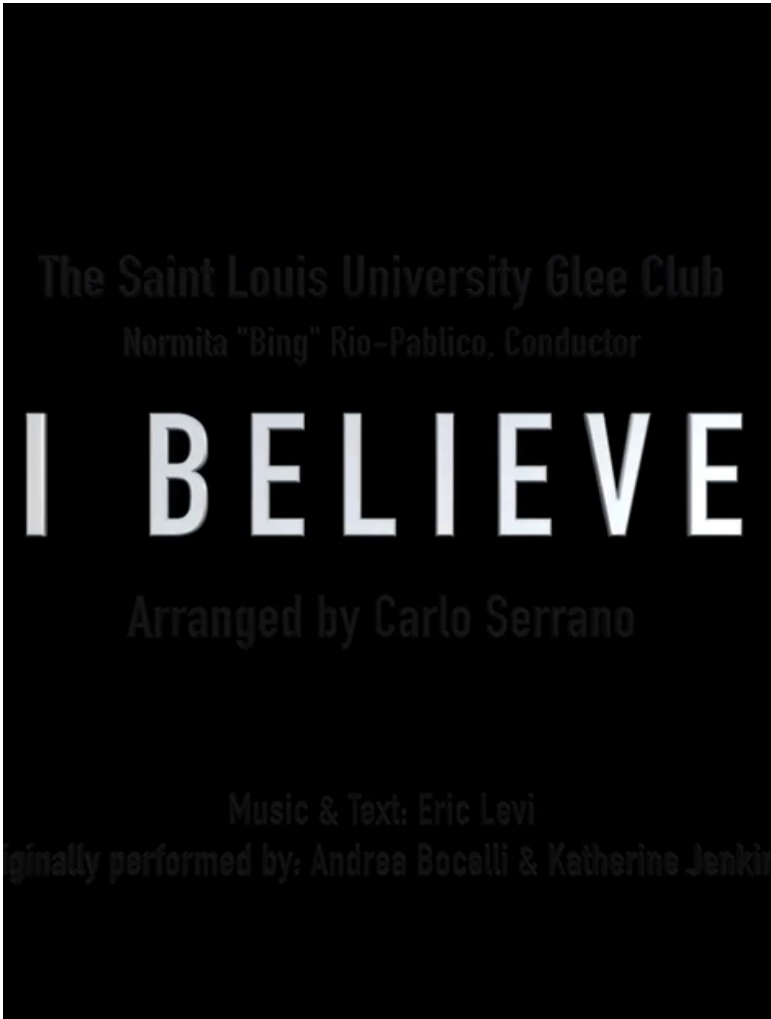
COMPOSED BY: KRISTEN ANDERSON-LOPEZ AND ROBERT LOPEZ  
ARRANGED BY: NORMITA "BING" RIO-PABLICO  
TITLE: NARITO  
COMPOSED BY: GARY VALENCIANO  
RENDITION: JED MADELA AND RACHELLE ANN GO



184 LIKES, 29 SHARES, 3 COMMENTS  
SAINT LOUIS UNIVERSITY  
OFFICIAL FACEBOOK PAGE

I BELIEVE

VIRTUAL PERFORMANCE



SYNOPSIS

the first ever virtual performance of the Saint Louis University Glee Club which gained attention from the many. The song "I Believe" which was arranged by Mr. Carlo Serrano had inspired the many despite the struggle from the start of the pandemic. Thus, the SLU Glee Club together with some of the alumni had helped inspire the many despite the pandemic has started.



DOCUMENTATIONS



to join and to care for love



I believe in the people of all nations



Yes, I Believe

REPertoire

I Believe

Composed by: Eric Levi

ORIGINALLY PERFORMED BY: Andrea Bocelli and Katherine Jenkins

ARRANGED BY: Mr. Carlo Serrano



1.8K VIEWS  
604 SHARES  
143 COMMENTS

## TRIBUTE TO SLU GLEE CLUB GRADUATES OF BATCH 2019-2020

### SYNOPSIS

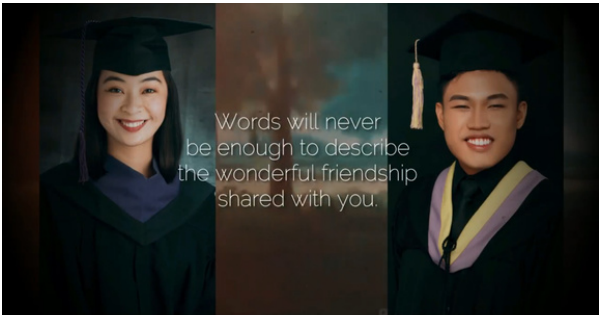


THE SAINT LOUIS UNIVERSITY GLEE CLUB  
NYANG PAGLA]

NI ILY MATTHEW MANIANO

The tribute to SLU Glee club graduates has been a tradition throughout the years. The graduates that became a pillar of the SLU Glee Club are dedicated with a special segment that commemorates their passion in the music industry.

DOCUMENTATIONS



REPERTOIRE

SA KANYANG PAGLALAYAG

COMPOSED BY: Mr. Ronnel Paz

ARRANGED BY: Mr. Ily Matthew Maniano



333 REACTS  
106 COMMENTS  
49 SHARES

## REV. FR. GILBERT B. SALES, CICM, BIRTHDAY CELEBRATION 2020





DOCUMENTATIONS



REPERTOIRE

NAIMAN SHARAG (THE EIGHT CHESTNUT HORSES)

Words: Nasun

Music: Se Enkhbayar



222 LIKES  
16 SHARES

LIYAG-BAGUIO DAY 2020



THE SAINT LOUIS UNIVERSITY GLEE CLUB

PORTFOLIO 2019-2022

DOCUMENTATIONS



REPERTOIRE

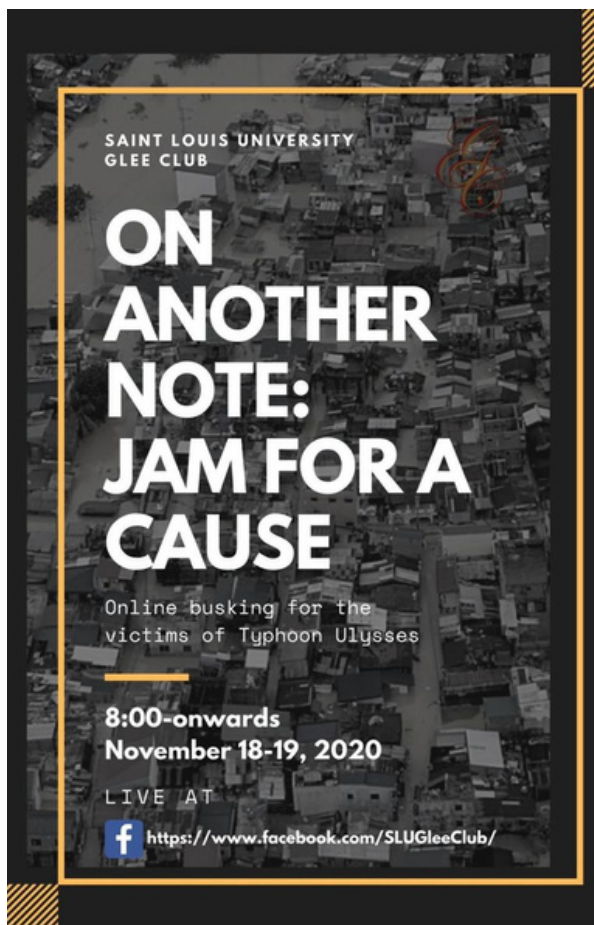
MANMULA(PLANTING SONG)

COMPOSED AND ARRANGED BY: MRS. NORMITA "BING" RIO-PABLICO  
MUSIC MIX AND MASTERING BY: MRS NORMITA "BING" RIO-PABLICO  
AND MR. ETHAN ANDREW VENTURA



222 LIKES  
37 COMMENTS  
16 SHARES

## ON ANOTHER NOTE: JAM FOR A CAUSE



### SYNOPSIS

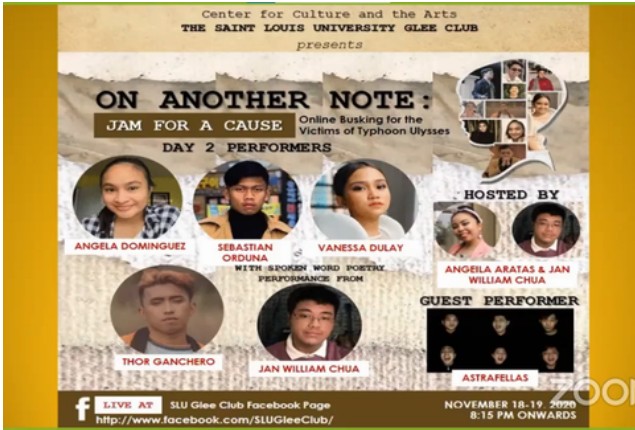
On another note; jam for a cause is an online busking event made by the SLU Glee Club which had supported many victims of the typhoon Ulysses the year 2020. The online busking event gathered enough money to aid in the donation drive for the typhoon Ulysses victims.



DOCUMENTATIONS

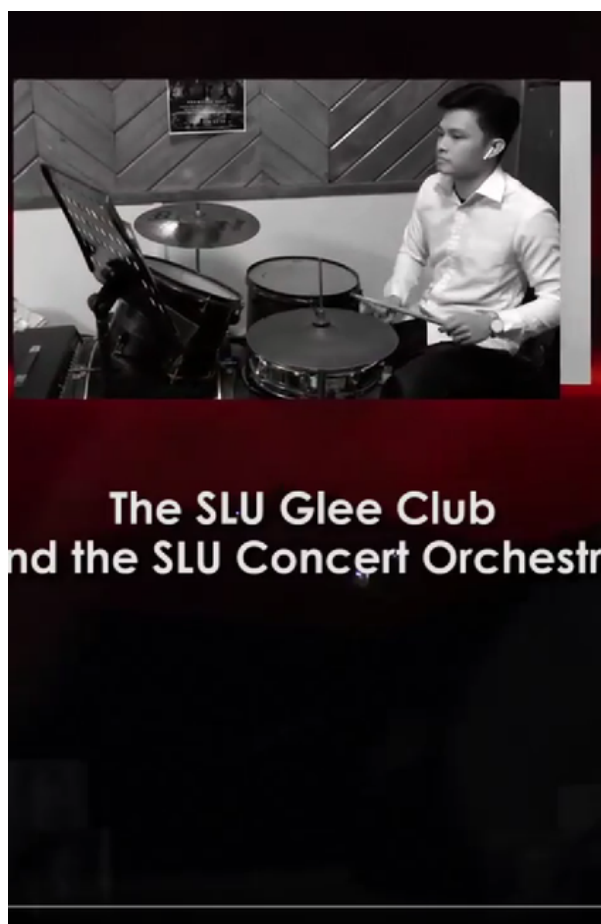
THE SAINT LOUIS UNIVERSITY GLEE CLUB

PORTFOLIO 2019-2022



211 REACTS  
1K COMMENTS  
3.2K VIEWS

## INDIGENOUS PEOPLES MONTH



### SYNOPSIS

indigenous peoples month 2020 has been celebrated with the collaboration of the SLU Glee club and SLU Concert Orchestra. This showcased the crafts of the artists of the SLU CCA. The collaboration has garnered many views and reactions with the support of the indigenous people and the artists of the SLU CCA.

DOCUMENTATIONS



REPERTOIRE

SA SALIW NG MGA GANSA

COMPOSED BY: MR. KARLO MARKO ALMONTE  
ARRANGED BY: MR. ETHAN ANDREW VENTURA

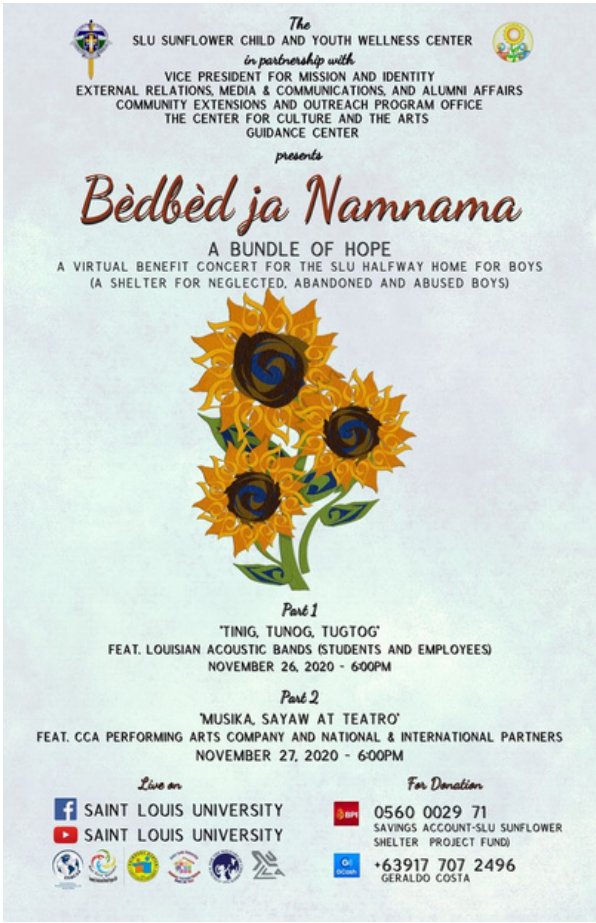


222 REACTS  
6.2K VIEWS



# BEDBED JA NAMNAMA

## PART 2: MUSIKA, SAYAW, AT TEATRO



### SYNOPSIS

The Sunflower child and youth well ness center together with SLU VPMI, ERMCAA, CCA, and the Guidance Center had a virtual collaboration for the first virtual benefit concert for the SLU Halfway home for boys ( a shelter for neglected, abandoned, and abused boys). This had been the first benefit concert that was made to help aid the SLU Halfway home for boys.



DOCUMENTATIONS



*Bèdbèd ja Namnama*

A BUNDLE OF HOPE

A VIRTUAL BENEFIT CONCERT FOR THE SLU HALFWAY HOME FOR BOYS  
(A SHELTER FOR NEGLECTED, ABANDONED AND ABUSED BOYS)

PART 2  
MUSIKA, SAYAW AT TEATRO

FEATURING

ALEXA SALCEDO • ALDO GLEN VENCILAO • SLU GLEE CLUB • SLU DANCE  
TROUPE • SLU CONCERT ORCHESTRA • TANGHALANG SLU • TAE PYUNG MU  
DANCE COMPANY, SOUTH KOREA • ATMA JAYA YOGYAKARTA UNIVERSITY,  
INDONESIA • HUACHIEW CHALERMPRAKIET UNIVERSITY, THAILAND • NAN  
SHAN HUI COMPANY, CHINA

NOVEMBER 27, 2020 - 6:00PM



SAINT LOUIS UNIVERSITY | [WWW.FACEBOOK.COM/SLU.EDU.PH](http://WWW.FACEBOOK.COM/SLU.EDU.PH)

REPERTOIRE

MANMULA

ARRANGED BY: MRS. NORMITA "BING" RIO-PABLICO

I Believe

Composed by: Eric Levi

ORIGINALLY PERFORMED BY: Andrea Bocelli and Katherine Jenkins

ARRANGED BY: Mr. Carlo Serrano



222 LIKES  
37 COMMENTS  
16 SHARES

# 109TH SLU FOUNDING ANNIVERSARY

## SYNOPSIS

The first virtual Christmas tree lighting event of SLU. The warmest opening number was led by the SLU Glee Club with the song O Christmas Tree or Oh Tannenbaum by Ernst Anschütz that was arranged by our dear Trainor Mrs. Normita "Bing" Rio-Pablico. the Cristmas tree lighting event also showcased other artist like Nestor Abella, Cortados, Don Hashbrowns, Momento, Cup of Joe, Astrafellas, and the SLU-SHS Students.



DOCUMENTATIONS



REPERTOIRE

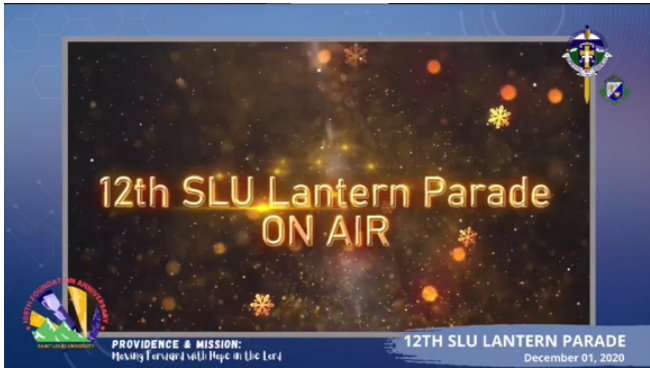
O Christmas Tree  
COMPOSER: Ernst Anschütz  
ARRANGED BY: Normita "Bing" Rio-Pablico



308 REACTS  
108 COMMENTS  
7.2K VIEWS

# 12TH SLU LANTERN PARADE FESTIVAL ON AIR

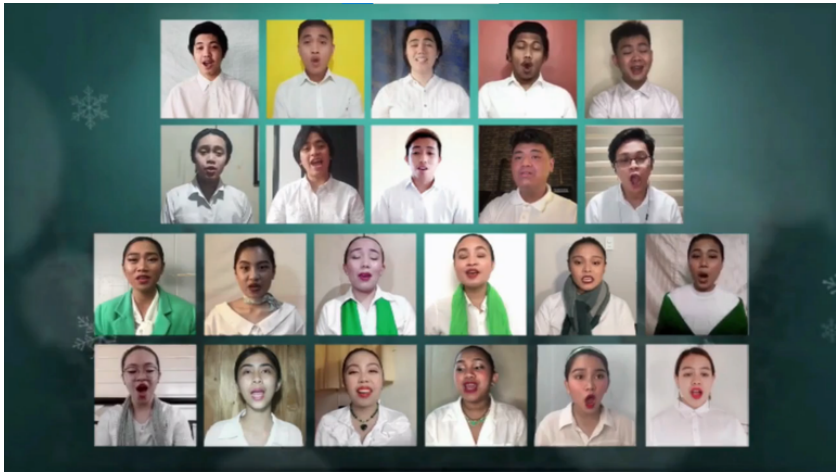
## SYNOPSIS



The first ever virtual lantern parade. The lantern parade has been a tradition to the SLU community. However, when pandemic came the physical Lantern parade festival has been put into halt. But the pandemic didn't stop the Louisan community to practice that lantern parade. Hence, the tradition was made virtually with each competing schools of the SLU community made this historical event successful.



DOCUMENTATIONS



REPertoire

MAGANDANG PAROL

ARRANGED BY: MRS. NORMITA "BING" RIO-PABLICO

O Christmas Tree

COMPOSER: Ernst Anschütz

ARRANGED BY: Normita "Bing" Rio-Pablico



222 LIKES  
37 COMMENTS  
16 SHARES

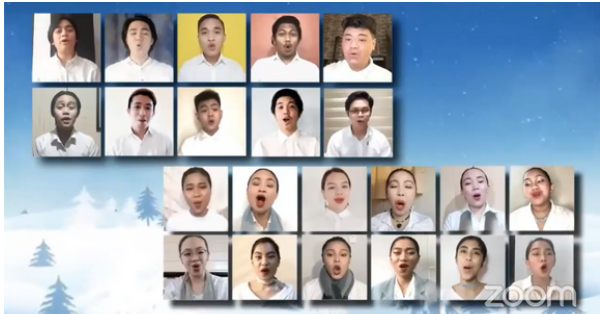
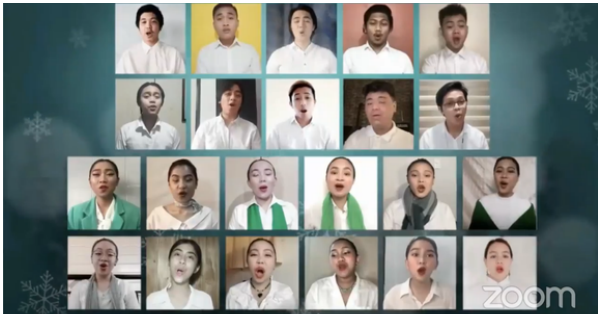
# DISTANSING: THE SLU GLEE CLUB CHOIR-ANTINE VIRTUAL CONCERT

## SYNOPSIS



SLU Glee Club has also started its first ever Virtual Concert which gained many views from various audiences. This has also led the alumni to join the concerts first ever live. This has tickled many hearts of the audiences as the songs sung was nostalgic to the audiences.

DOCUMENTATIONS



717 REACTS  
2K COMMENTS  
15K VIEWS

# UP POLITICAL SOCIETY: DIWA NG PASKO-HANDOG SA PILIPINO

## SYNOPSIS

UP Political Society also invited the SLU Glee Club to perform on their virtual concert for a cause for the typhoon Ulysses victims. The SLU Glee Club has performed some of the remarkable Christmas songs as they serenade the audiences with the nostalgic Christmas Pieces.





DOCUMENTATIONS



*The Performers*

Jose Mari Chan  
UP Symphony Orchestra  
Sugarcane  
Cheska Gomez  
St. Louis University Glee Club  
Hail Mary the Queen Children's Choir  
Halina  
Kamara

Dec. 18, 2020 | 7:15-9:00pm | via Facebook live

co-presented by:

media partners:



216 REACTS  
198 SHARES

# NPMS: TUNES OF HOPE

## SYNOPSIS



First virtual recital of the NPMS. The talents and artist of the NPMS showcasing their broad knowledge and skills with their own instruments and passion. The SLU Glee Club has also performed their all male lupang hinirang as well as the duet of Miss Vanessa Dulay and Miss Cleo Lagunilla.

DOCUMENTATIONS



717 REACTS  
2K COMMENTS  
15K VIEWS

## HARK! THE KING HAS COME!

### SYNOPSIS

A Christmas concert collaboration of the CCA resident companies as it serenades the audiences. The Christmas concert has been a collaboration of the SLU Glee club, concert orchestra, dance troupe, Tanghalang SLU, and the SLU Marching Band.





DOCUMENTATIONS



741 REACTS  
1.6K COMMENTS  
11K VIEWS

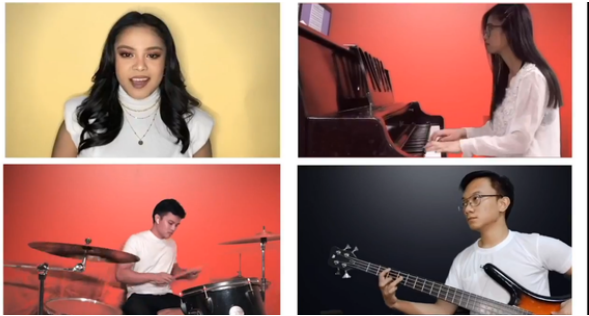
ALUMNI TALKS: GABFEST CCA EDITION



SYNOPSIS

Alumni Talks: Gabfest CCA Edition. The Alumni talks features the celebrated artists and professionals of the SLU CCA Performing Groups.

DOCUMENTATIONS



224 REACTS  
967 COMMENTS  
5.5K VIEWS



## SAINT LOUIS UNIVERSITY MUSIC FESTIVAL 2021



### SYNOPSIS

Annual music festival of the Saint Louis University is held virtually with each competing school entries. Each entry is evaluated by different music and chorale enthusiast, which, is carefully and systematically evaluated by the judges.



DOCUMENTATIONS

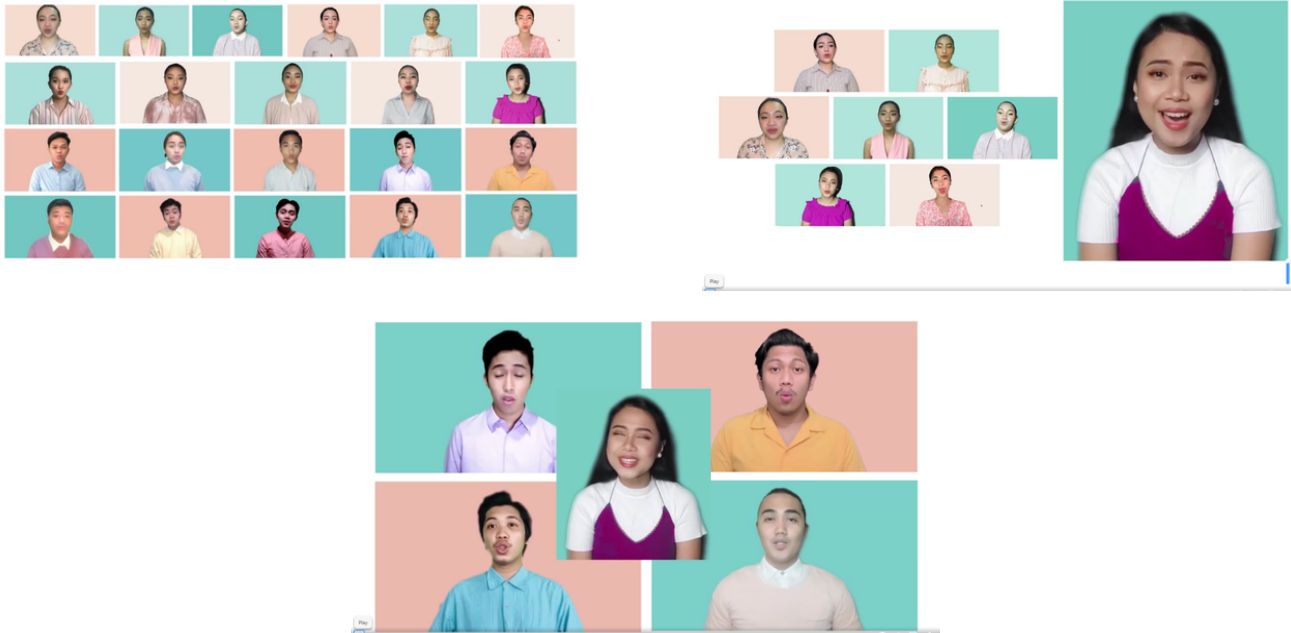


1.2K REACTS  
7.5K COMMENTS  
29K VIEWS

REV. FR. GILBERT B. SALES, CICM'S 29TH SACERDOTAL ANNIVERSARY



DOCUMENTATIONS



116 REACTS  
8 COMMENTS  
3.1K VIEWS

iCREATE. CREATIVITY WITHOUT BOUNDARIES:  
CELEBRATING LOCAL AND INTERNATIONAL  
ACHIEVEMENTS.

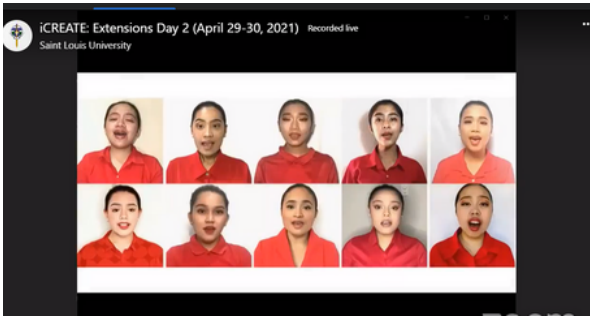
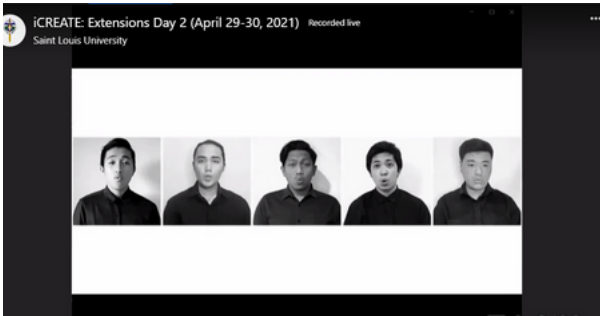
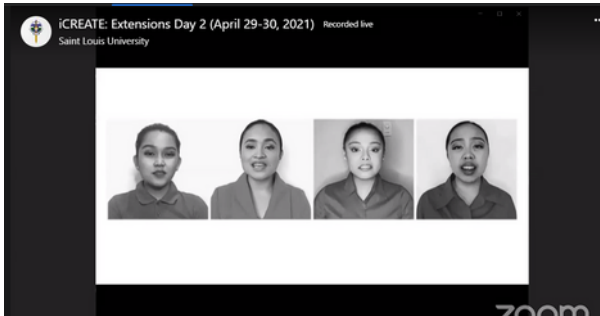


SYNOPSIS

iCREATE. CREATIVITY WITHOUT  
BOUNDARIES: CELEBRATING  
LOCAL AND INTERNATIONAL  
ACHIEVEMENTS. EXTENSIONS DAY.



DOCUMENTATIONS



212 REACTS  
81 COMMENTS  
2.9K VIEWS

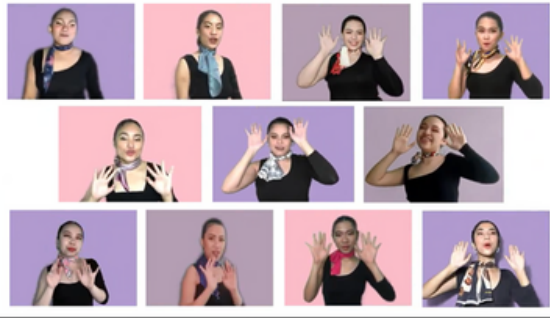
# WE SING BECAUSE: THE SLU GLEE CLUB VIRTUAL CONCERT

## SYNOPSIS

The pandemic has put everything into a halt: a standstill. But as seasons change, so do we. "We Sing Because: The SLU Glee Club Virtual Concert" is the group's first ever major concert held online. On April 28, 2021, this show bridged the SLU Glee Club with its audience once again, amidst the new normal. Their desire to overcome the barriers to deliver their songs was exhibited. It gave a glimpse of what their journey has been. It was a show that reminded not only the audience, but the student artists as well, of what their reasons are for singing.



DOCUMENTATIONS



2.1K VIEWS , 200 SHARES  
THE SLU GLEE CLUB  
OFFICIAL FACEBOOK PAGE

**REPERTOIRE****LUPANG HINIRANG**

COMPOSED BY: JULIAN FELIPE  
ARRANGED BY: LUCIO SAN PEDRO

**ALL IS FOUND**

COMPOSED BY: KRISTEN ANDERSON - LOPEZ AND ROBERT LOPEZ  
ARRANGED BY: NORMITA "BING" RIO-PABLICO

**DADALHIN**

COMPOSED BY: TATS FAUSTINO  
POPULARIZED BY: REGINE VELASQUEZ  
ARRANGED BY: ROBERT DELGADO

**WARAY WARAY**

POPULARIZED BY: SYLVIA LA TORRE  
ARRANGED BY: FIDEL G. CALALANG JR.

**BETTER WHEN I'M DANCING**

COMPOSED AND SUNG BY: MEGHAN TRAINOR  
ARRANGED BY: W. POQUIZ

**I AM BUT A SMALL VOICE**

COMPOSED BY: ROGER WHITTAKER  
ARRANGED BY: NORMITA "BING" RIO-PABLICO

**'DI BALE NA LANG**

COMPOSED BY: GARY VALENCIANO  
ARRANGED BY: NORMITA "BING" RIO-PABLICO

**KAHIT ISANG SAGLIT**

COMPOSED BY: LOUIE CAMPO  
ARRANGED BY: NORMITA "BING" RIO-PABLICO

**INTO THE UNKNOWN**

COMPOSED BY: KRISTEN ANDERSON-LOPEZ AND ROBERT LOPEZ  
ARRANGED BY: NORMITA "BING" RIO-PABLICO

**HATAW NA**

COMPOSED BY: GEORGE BLACK  
TRANSLATED BY: JUNGEE MARCELO  
POPULARIZED BY: GARY VALENCIANO  
ARRANGED BY: NORMITA "BING" RIO-PABLICO  
PERCUSSION: ETHAN ANDREW C. VENTURA

**HEAL THE WORLD**

COMPOSED AND POPULARIZED BY: MICHAEL JACKSON  
ARRANGED BY: NORMITA "BING" RIO-PABLICO



## MUSIKLASIKS VOLUME 1: AWIT AT INDAK

### SYNOPSIS

The SLU Glee Club and SLU Dance Troupe initiated a benefit showcase for an alumnus of the Center for Culture and the Arts, who suffers from Lymphoma. This benefit showcase was entitled, "Musiklasiks: Awit at Indak", a collaboration of the two performing groups, through an online concert last June 18-19 of the year 2021. It premiered on the SLU CCA's Facebook page. Through singing and dancing, both groups shined and made an effort to extend the spirit of giving. On the first day, there was a combination of solo and group performances that attracted a huge amount of support and appreciation from the audience, through the livestream comment section. On the concluding day of the benefit concert, both groups still performed their own repertoires to showcase the essence of "kapit-bisig", by facilitating the said event for an alumnus who had previously rendered love and effort to the organization.



DOCUMENTATIONS



970 COMMENTS  
4K VIEWS

**REPERTOIRE****LUPANG HINIRANG**

COMPOSED BY: JULIAN FELIPE  
ARRANGED BY: NORMITA "BING" RIO-PABLICO  
PERFORMED BY: THE SLU GLEE CLUB

**PARA SA AKIN**

COMPOSED BY: EMIL PAMA  
POPULARIZED BY: SITI  
PERFORMED BY: KYRELL D. MANALUNGSUNG  
INSTRUMENTAL FROM: KARAOKE NEGRA

**I WON'T LAST A DAY**

COMPOSED BY: ROGER NICHOLS AND PAUL WILLIAMS  
POPULARIZED BY: THE CARPENTERS  
PERFORMED BY: KYRELL MANALUNGSUNG  
INSTRUMENTAL FROM: COVERSPH

**RAINBOW**

COMPOSED BY: JAY DURIAS AND SHARON INDUCTIVO  
POPULARIZED BY: SOUTH BORDER  
PERFORMED BY: JULLIENE MAXENE D. BOADILLA  
INSTRUMENTAL FROM: ACOUSTICHEAVEN

**WITH A SMILE**

COMPOSED BY: ELY BUENDIA  
POPULARIZED BY: ERASERHEADS  
PERFORMED BY: JULLIENE MAXENE D. BOADILLA  
INSTRUMENTAL FROM: KARAOKEYSPH

**HATAW NA**

COMPOSED BY: GEORGE BLACK  
TRANSLATED BY: JUNGEE MARCELO  
POPULARIZED BY: GARY VALENCIANO  
ARRANGED BY: NORMITA "BING" RIO PABLICO

**HANGGANG DITO NA LANG**

COMPOSED BY: ANGELICO D. AGUILAR  
INSTRUMENTAL BY: JOHANN RAPHAEL M. ROSARIO AND VANESSA FAYE E. DULAY  
INTERPRETED BY: JOHN VICTOR C. GANCHERO  
MIX AND MASTERING: PURE WAVE RECORDING STUDIO, DAGUPAN CITY

**HIMALA**

COMPOSED AND ORIGINALLY SUNG BY: RIVERMAYA  
PERFORMED BY: ANGEILA GREFF R. ARATAS  
INSTRUMENTAL BY: COVERSPH

**LIGAYA**

COMPOSED BY: ELY BUENDIA  
POPULARIZED BY: ERASERHEADS  
PERFORMED BY: ANGEILA GREFF R. ARATAS  
INSTRUMENTAL FROM: COVERSPH

**LUPANG HINIRANG**

COMPOSED BY: JULIAN FELIPE  
ARRANGED BY: NORMITA "BING" RIO-PABLICO  
PERFORMED BY: THE SLU GLEE CLUB

**DI NA MULI**

COMPOSED BY: JAZZ NICOLAS AND WALLY ACOLOLA  
POPULARIZED BY: ITCHYWORMS  
PERFORMED BY: AUBREY ANTONETTE D. RILLORTA  
INSTRUMENTAL FROM: COVERSPH

**OO**

COMPOSED BY: JIM G THIRLWELL AND ROLAND MOSIMANN  
POPULARIZED BY: UDD  
PERFORMED BY: AUBREY ANTONETTE D. RILLORTA  
INSTRUMENTAL FROM: ACOUSTICHEAVEN

**TORETE**

COMPOSED BY: DARWIN HERNANDEZ  
POPULARIZED BY: MOONSTAR 88  
PERFORMED BY: CHRISTIAN B. OAING  
INSTRUMENTAL FROM: ALPHARECORDS

**YOU**

COMPOSED BY: GERRY PARAISO  
POPULARIZED BY: BASIL VALDEZ  
PERFORMED BY: CHRISTIAN B. OAING  
INSTRUMENTAL FROM: COVERSPH

**HANGGANG DITO NA LANG**

COMPOSED BY: ANGELICO D. AGUILAR  
INSTRUMENTAL BY: JOHANN RAPHAEL M. ROSARIO AND VANESSA FAYE E. DULAY  
INTERPRETED BY: JOHN VICTOR C. GANCHERO  
MIX AND MASTERING: PURE WAVE RECORDING STUDIO, DAGUPAN CITY

**KISAPMATA**

COMPOSED BY :RICO BLANCO  
POPULARIZED BY: RIVERMAYA  
PERFORMED BY: RANIEL S. HORTALEZA  
INSTRUMENTAL FROM: ATOMIC KARAOKE

**LET ME BE THE ONE**

COMPOSED AND POPULARIZED BY: JIMMY BONDOC  
PERFORMED BY: RANIEL S. HORTALEZA  
INSTRUMENTAL FROM: ACOUSTICHEAVEN

**I AM BUT A SMALL VOICE**

COMPOSED BY: ROGER WHITTAKER  
ARRANGED BY: NORMITA "BING" RIO-PABLICO  
PERFORMED BY: THE SLU GLEE CLUB



## MUSIKLASIKS VOLUME 2

### SYNOPSIS

The SLU Glee Club continued to shine and extend its helping hands once more by performing a Volume II of "Musiklasiks" through an online concert on July 23, 2021 via Facebook live streaming. This benefit concert was titled "Musiklasiks: Volume II". It was performed by current and alumni members of the SLU Glee Club. The benefit concert was organized by the performing group in collaboration with two well-known acapella groups: Pinopela and Astrafellas. Due to the worldwide pandemic, members and families of the performing group had become afflicted and were not exempted with the Coronavirus. To assist and lessen the burden, charitable contributions were made to infected SLU Glee Club members and families such as the Oranza family, current member Vince Sison's mother, and Kenneth Castillo's brother. In accordance with this, both acapella groups performed their best repertoires, as did the Glee Club, who illuminated with the current members' solo and duet performances.



DOCUMENTATIONS



1.4K COMMENTS  
6.6K VIEWS

## REPERTOIRE

**WE ARE ONE**

COMPOSED BY: CAROL BANAWA  
PERFORMED BY: RAESA LAI L. COLOMA

**UMAGANG KAY GANDA**

COMPOSED BY: RAY-AN FUENTES  
PERFORMED BY: ANGEILA GREFF R. ARATAS

**MISTER SANDMAN (SSAA)**

COMPOSED BY: PAT BALLARD  
POPULARIZED BY: THE CHORDETTES  
PERFORMED BY: JESSICA LADINES-MIRANDILLA

**FEELING GOOD**

COMPOSED BY: ANTHONY NEWLY & LESLIE BRICUSSE  
POPULARIZED BY: MICHAEL BUBBLE  
PERFORMED BY: JOHN VICTOR C. GANCHERO & RANIEL S. HORTALEZA

**MAPA**

COMPOSED BY: JOHN PABLO NASE, SB19  
POPULARIZED BY: SB 19  
PERFORMED BY: BENEDIX RAMOS

**NARITO NA**

COMPOSED, POPULARIZED, AND PERFORMED BY: RAFFY CALICDAN

**DATI**

COMPOSED BY: YUMI LACSAMANA & THYRO ALFARO  
POPULARIZED BY: TIPPY DOS SANTOS & SAM CONCEPCION  
PERFORMED BY: ANGELA J. DOMINGUEZ & SEBASTIAN MARI N. ORDUNA

**IF THE FEELING IS GONE**

COMPOSED BY: JIMMY BORJA  
POPULARIZED BY: ELLA MAE SAISON  
PERFORMED BY: ROWENA MICHELLE CANA-GUISON

**YOU ARE THE REASON**

COMPOSED BY: JON MAGUIRE, COREY SANDERS, & CALUM SCOTT  
POPULARIZED BY: CALUM SCOTT  
PERFORMED BY: DELL RAMIREZ

**WIN**

COMPOSED BY: BRIAN MCKNIGHT & BRANDON BARNES  
POPULARIZED BY: BRIAN MCKNIGHT  
PERFORMED BY: DON BENITO MANUEL M. SANCHEZ

**LEAVE THE DOOR OPEN**

COMPOSED BY: BRUNO MARS, BRANDON ANDERSON,  
DERNST EMILE II, & CHRISTOPHER BRODY BROWN  
POPULARIZED BY: SILK SONIC  
PERFORMED BY: ASTRAFELLAS

**THIS IS ME**

COMPOSED BY: JUSTIN PAUL, BENJ PASEK  
POPULARIZED BY: KEALA SETTLE  
PERFORMED BY: IVAN MARK I. DE LEON

**BECAUSE OF YOU**

COMPOSED BY: KELLY CLARKSON, DAVID HODGES, & BEN MOODY  
POPULARIZED BY: KELLY CLARKSON  
PERFORMED BY: RAPHAEL SANGEL

**ALAPAAP/OVERDRIVE**

COMPOSED BY: ELY BUENDIA  
POPULARIZED BY: ERASERHEADS  
PERFORMED BY: HERALD LOISHAN B. SEMSEM

**ALL I ASK**

COMPOSED BY: ADELE, BRUNO MARS, PHILIP LAWRENCE, & CHRISTOPHER BRODY BROWN  
POPULARIZED BY: ADELE  
PERFORMED BY: ANTHONY CASTILLO

**GABAY**

COMPOSED BY: JAMUS NEWTON HOWARD  
POPULARIZED BY: KZ TANDINGAN  
PERFORMED BY: RAESA LAI L. COLOMA & CLEO BEATRIZ A. LAGUNILLA

**HOW DO YOU HEAL A BROKEN HEART**

COMPOSED BY: CAROLE BAYER SAGER & CHRIS WALKER  
POPULARIZED BY: CHRIS WALKER  
PERFORMED BY: JEFF CORONADO

**HOME**

COMPOSED BY: CHARLIE SMALLS  
POPULARIZED BY: DIANA ROSS  
PERFORMED BY: KENNETH DALE C. VILLARIN



**HEAL THE WORLD**

COMPOSED BY: MICHAEL JACKSON & MARTY PAICH

POPULARIZED BY: MICHAEL JACKSON

PERFORMED BY: INGRID PAYAKET

**KUMAPIT KA LANG**

COMPOSED BY: NOEMI OCIO

POPULARIZED BY: MELA

PERFORMED BY: VANESSA FAYE E. DULAY

**AIN'T NO MOUNTAIN HIGH**

COMPOSED BY: NICKOLAS ASHFORD & VALERIE SIMPSON

POPULARIZED BY: MARVIN GAYE & TAMMI TERREL

PERFORMED BY: PINOPELA

## ON ANOTHER NOTE 2: JAM FOR A CAUSE VOLUME II

### ON ANOTHER NOTE: JAM FOR A CAUSE VOL.2

A BENEFIT CONCERT FOR THE VICTIMS OF  
TYPHOON MARING



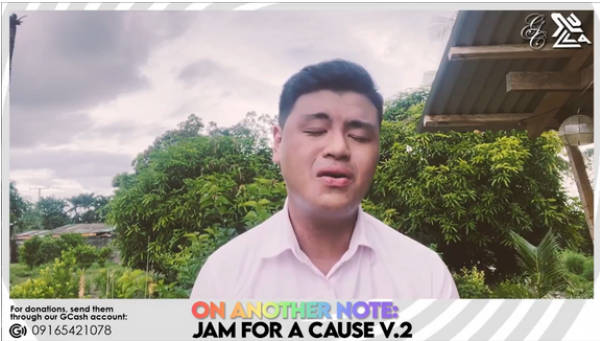
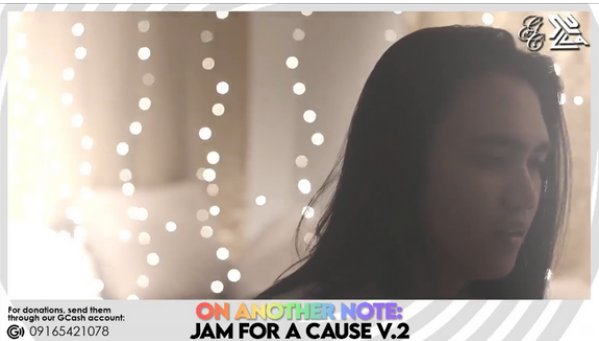
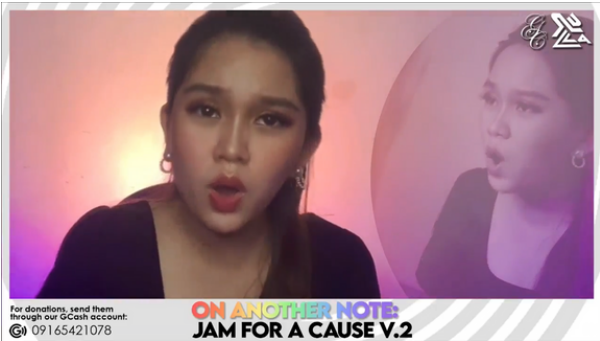
For in-kind donations, you may send them to our  
GCash account: 09165421078

October 30 at 6:30PM

#### SYNOPSIS

After "ON ANOTHER NOTE: Volume I" which garnered a total of PHP 30,000, the SLU Glee Club once again opened their hearts and hands to those affected by Typhoon Maring. On the first run of this jam for a cause, all proceeds went to the victims of Typhoon Ulysses in Cagayan. Using their God-given voices as instruments of hope, "On Another Note: Volume II" was broadcasted online on October 30, 2021. A total of PHP 5,844 was garnered from this event.

DOCUMENTATIONS



475 LIKES  
12K VIEWS  
1.3K COMMENTS

## REPERTOIRE

**Now That You're Gone**

Popularized by: Ella Mae Saison and Juris  
Composed by: Kahn/Fiorito  
Instrumental by: Platinum Karaoke Channel  
Cover by: Vanessa Faye Dulay

**Kahit Maputi na ang Buhok Ko**

Popularized by: Richard Poon  
Composed by: Rey Valera  
Instrumental by: Richard Poon - Topic  
Cover by: Vanessa Faye Dulay

**Loyal, Brave, True**

Popularized by: Christina Aguilera  
Composed by: Jamie Hartman/ Harry Williams / Rosi Golan  
Instrumental by: Xtina Daily  
Cover by: Kyrell Manalungsung

**Easy On Me**

Popularized by: Adele Laurie Blue Adkins  
Composed by: Adele/ Jessie J/ Darhyl Camper  
Instrumental by: Musisi Karaoke  
Cover by: Kyrell Manalungsung

**Falling**

Popularized by: Harry Styles  
Composed by: Harry Styles/ Kid Harpoon  
Instrumental by: Sing2Piano  
Cover by: Vince Sison

**The Death of a Bachelor**

Popularized by: Panic! At the Disco  
Composed by: Brendon Urie/ Jake Sinclair, Lolo  
Instrumental by: Hope's Mashup  
Cover by: Vince Sison

**Overdrive**

Popularized by: Eraserheads  
Composed by: Ely Buendia  
Instrumental by: Zteg2010  
Cover by: Aubrey Rillorta



## REPERTOIRE

**Million Reasons**

Popularized by: Lady Gaga  
Composed by: Lady Gaga/ Hillary Lindsey/ Mark Ronson  
Instrumental by: InstrumentalsVEVO  
Cover by: Aubrey Rillorta

**Binibini**

Popularized by: Zack Tabudlo  
Composed by: Zack Tabudlo  
Instrumental by: Johann Raphael Rosario  
Cover by: Johann Raphael Rosario

**She Was Mine**

Popularized by: AJ Rafael  
Composed by: AJ Rafael/ Jesse Barrera  
Instrumental by: Johann Raphael Rosario  
Cover by: Johann Raphael Rosario

**Because of You**

Popularized by: Kelly Clarkson  
Composed by: Kelly Clarkson/ David Hodges/ Ben Moody  
Instrumental by: MIDIFine Systems  
Cover by: Selina Parallag

**I Won't Say "I'm Inlove"**

Popularized by: Susan Egan  
Composed by: Alan Menken/ David Zippel  
Instrumental by: Various Artists  
Cover by: Selina Parallag

**Hatid**

Popularized by: The Juans  
Composed by: Carl Guevarra  
Instrumental by: KaraoKeys PH  
Cover by: Jan William Chua

**Just the Two of Us**

Popularized by: Bill Withers/ Grover Washington, Jr.  
Composed by: Bill Withers/ Ralph MacDonald/ William Salter  
Instrumental by: Gitaris Laperan  
Cover by: Jan William Chua

## PAMANANG HIMIG 2021

### SYNOPSIS

The Cultural Center of the Philippines' "Pamanang Himig" which premiered last November 17, 2021, sought to rekindle the appreciation and love for Philippine folk songs, especially from the young generation. The SLU Glee Club alongside other leading artists and groups showcased a collection of folk songs from Luzon. Together with the SLU Dance Troupe, they proudly performed the Kalinga song, "Manmula" which relates planting to camaraderie and working together. It was a song composed for a dance drama entitled "Dinulawan Ken Bugan" which was first staged at SLU's Center for Culture and the Arts.



DOCUMENTATIONS



REPertoire

"MANMULA" PLANTING SONG

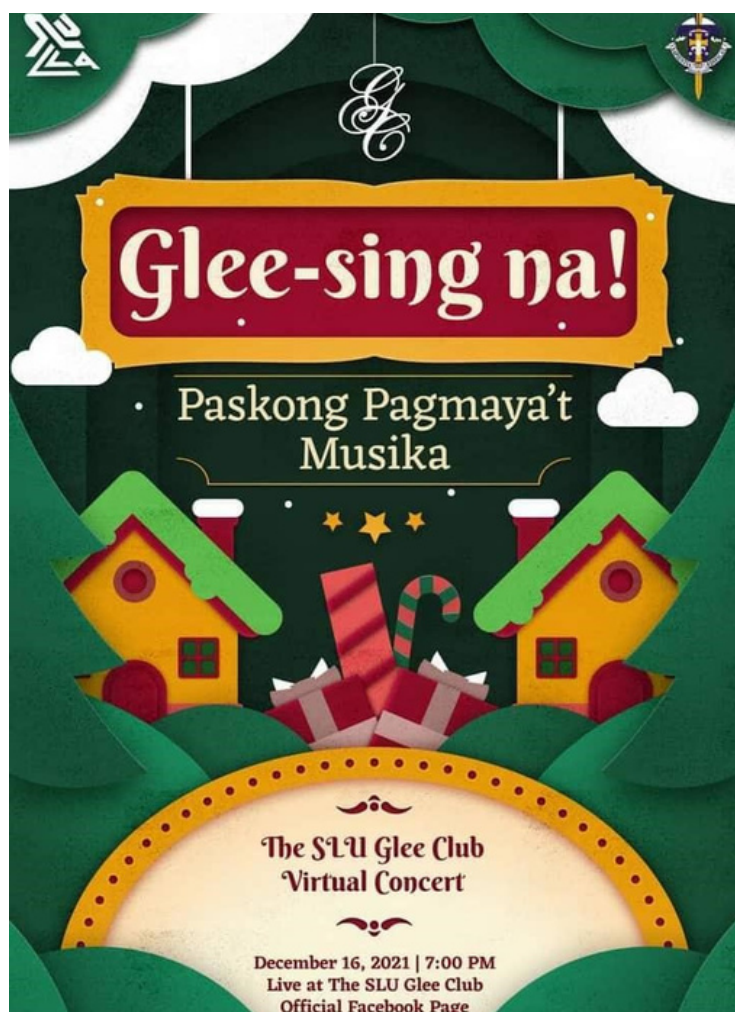
COMPOSED BY: NORMITA "BING" RIO-PABLICO



101 LIKES  
1.4K VIEWS



## GLEE-SING NA! CHRISTMAS CONCERT 2021



### SYNOPSIS

During the most wonderful time of the year, the SLU Glee Club once again conducted a Christmas virtual concert via Facebook live streaming, which received over 20,000 views last December 16, 2021. The concert was titled "Glee-sing Na: Paskong Pagmaya't Musika,". It featured both current and new members along with fun-filled repertoires of the group. This Christmas concert was a way of showing the world that despite the pandemic, the group will still perform and bring happiness, and that the audience can still feel the hymn and rhythm of the group's voices in the comfort of their own homes.



DOCUMENTATIONS



906 LIKES  
20K VIEWS

## REPERTOIRE

**KAMPANA NG SIMBAHAN**

COMPOSED BY: JUAN SILOS JR.  
ARRANGED BY: FIDEL CALALANG

**THE CHRISTMAS SONG**

COMPOSED BY: MELVIN HOWARD TORME (1925-1999) AND ROBERT WELLS (1922-1999)  
ARRANGED BY: PETER GRITTON (1963)

**A HOLLY JOLLY CHRISTMAS**

COMPOSED BY: BY JOHNNY MARKS  
ARRANGED BY: KIRBY SHAW

**THE FIRST NOEL**

COMPOSED BY: DAVIES GILBERT AND WILLIAM SANDYS (1833)  
ARRANGED BY: JOHN STAINER (1871)

**THAT'S CHRISTMAS TO ME**

COMPOSED BY: SCOTT HOYING AND KEVIN OLUSULA (2015) OF PENTATONIX

**PASKO NA NAMAN**

COMPOSED BY: FELIPE PADILLA DE LEON  
LYRICS BY: LEVI CELERIO  
ARRANGED BY: GEORGE HERNANDEZ

**KUMUKUTIKUTITAP**

COMPOSED BY: BY RYAN CAYABYAB  
LYRICS BY: JOSE JAVIER REYES

**A CHRISTMAS CAROL**

COMPOSED BY: LESLIE BRICUSSE.  
ARRANGED BY: RYAN CAYABYAB

**KRISMAS NA!**

COMPOSED BY: ELEMER BLANCAFLOR AND ROMER TIMBREZA  
ARRANGED BY: NORMITA "BING" RIO-PABLICO

**MUNTING SANGGOL!**

COMPOSED BY: RYAN CAYABYAB  
ARRANGED BY: NORMITA "BING" RIO-PABLICO

**HETO NANAMAN**

COMPOSED BY: BY RYAN CAYABYAB  
ARRANGED BY: NORMITA "BING" RIO-PABLICO

# DANIW ITI IBAG-IW

## SYNOPSIS

"Daniw Iti Ibagiw" is a collaborative virtual performance of various artist groups from the different universities of Baguio City. It was live streamed on November 13, 2021 at Baguio Creative City's Facebook page. With Baguio City being a "Creative City of Crafts and Folk Art" as declared by the United Nations Educational, Scientific, and Cultural Organization (UNESCO), this event gave an experience of the city's living art and its celebration of creativity in its culture. Dance troupe, as well as Tanghalang SLU, rendered performances that captivated online audiences and encapsulated Baguio City's colorful, and well kept traditions and culture.



DOCUMENTATIONS



246 LIKES  
2.6K VIEWS



REPERTOIRE

**NOYPI**

POPULARIZED BY: BAMBOO

ARRANGED BY: NORMITA "BING" RIO-PABLICO

**LUNGSOD NG MIRASOL**

LYRICS BY: ANGEILA GREFF ARATAS, VANESSA FAYE DULAY, & JAN WILLIAM

**CHUA AY**

MUSIC BY: NORMITA "BING" RIO-PABLICO

INSTRUMENTATION BY: ETHAN ANDREW VENTURA

INTERPRETER: SEBASTIAN MARI N. ORDUNA

## **BELGIAN AMBASSADOR TO THE PHILIPPINES MICHEL PARYS**

### **SYNOPSIS**

Saint Louis University has a long heritage of welcoming Belgian priests, and as years pass, the institution continuously renews its long-standing friendship with Belgium Ambassador Parys, by welcoming fresh exchange students from Louvain. Belgian Ambassador Michel Parys was welcomed at Saint Louis University's Gevers Hall on December 22, 2021. To greet its guests, the SLU Glee Club and SLU Dance Troupe took the stage once again and performed their own repertoires, to convey their support for this significant milestone. This performance is an expression of hope for more years of friendship and camaraderie not just between Saint Louis University, but also between the City of Baguio and Belgium.

## DOCUMENTATIONS



## REPERTOIRE

**A HOLLY JOLLY CHRISTMAS**

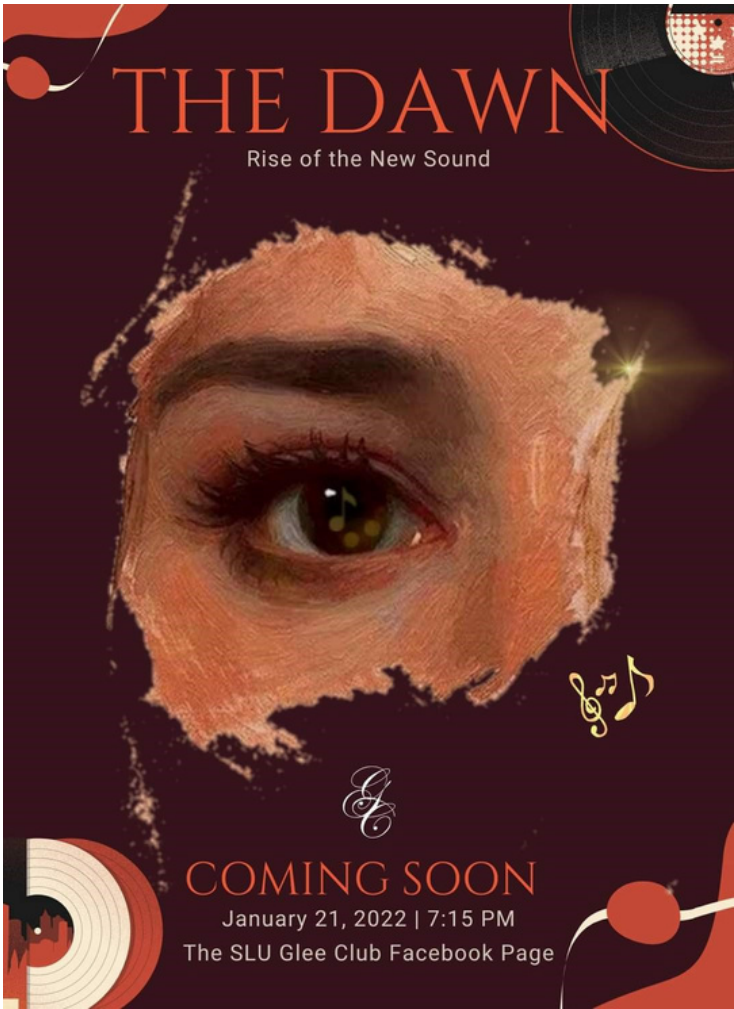
MUSIC AND LYRICS BY: JOHNNY MARKS

ARRANGED BY: KIRBY SHAW

**KUMUKUTIKUTITAP**

MUSIC COMPOSED BY: RYAN CAYABYAB

THE DAWN: RISE OF THE NEW SOUND

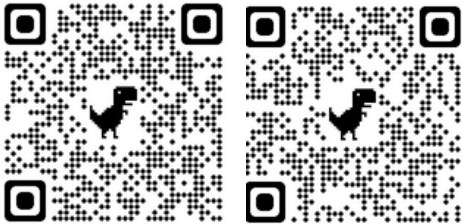


SYNOPSIS

It has become a tradition over the years to welcome new members of the SLU Glee Club. On January 21, 2022, a virtual showcase was held via Facebook live streaming, which received more than 12,000 views. This concert was titled "The Dawn: Rise of the New Sound,". It featured the newest members performing solo with their own song choice. Given the challenges of performing virtually due to the worldwide pandemic, 24 new faces have been introduced and highlighted in this concert, where they received a lot of appreciation and support from the livestream audience, as well as their seniors and alumni.



DOCUMENTATIONS



942 LIKES  
12.8K VIEWS

## REPERTOIRE

**AVE MARIA**

ARRANGED BY: NORMITA "BING" RIO-PABLICO

**LUPANG HINIRANG**

COMPOSED BY: JULIAN FELIPE

ARRANGED BY: NORMITA "BING" RIO-PABLICO

**TIME IN**

POPULARIZED BY: YENG CONSTANTINO

INSTRUMENTAL FROM: LADY JOY KARAOKE MOBILE

PERFORMED BY: CAMILLE FABABIER

**I LOVE YOU BABY**

POPULARIZED BY: FRANK SINATRA

INSTRUMENTAL FROM: SING KING

PERFORMED BY: YURI GABRIEL BAMBALAN

**HOPELESSLY DEVOTED TO YOU**

POPULARIZED BY: OLIVIA NEWTON-JOHN

INSTRUMENTAL FROM: KARAOKEYTV

PERFORMED BY: JHONNA GAIL ESCUADRO

**LUNOD**

POPULARIZED BY: BEN&amp;BEN, JUAN KARLOS, AND ZILD

INSTRUMENTAL FROM: YVES VILLAMOR

PERFORMED BY: CHRISTIAN DANE SEVILLA

**IF I AIN'T GOT YOU**

POPULARIZED BY: ALICIA KEYS

INSTRUMENTAL FROM: PIANONEST

PERFORMED BY: NIANNE BEATRICE BALMORES

**ALL OF ME**

POPULARIZED BY: JOHN LEGEND

INSTRUMENTAL FROM: SING KING

PERFORMED BY: GIULIAN ULEP

**IKAW**

POPULARIZED BY: YENG CONSTANTINO

INSTRUMENTAL FROM: COVERSPH

PERFORMED BY: AICEL NACPIL

**HINAHANAP HANAP KITA**

POPULARIZED BY: RIVERMAYA  
INSTRUMENTAL FROM: ACOUSTICHEAVEN  
PERFORMED BY: JONATHAN BUCLAY

**ONE LAST TIME**

POPULARIZED BY: ARIANA GRANDE  
INSTRUMENTAL FROM: SING KING  
PERFORMED BY: MARLA JANE CONCEPCION

**ARAW-GABI**

POPULARIZED BY: REGINE VELASQUEZ  
INSTRUMENTAL FROM: ROJ DACLAG JR  
PERFORMED BY: JOHNRAY CONDES

**MR. KUPIDO**

POPULARIZED BY: RACHEL ALEJANDRO  
INSTRUMENTAL FROM: RAMOS MUSIC SOCIETY  
PERFORMED BY: ALIYAH XYRIS PERALTA

**SADDEST VANILLA**

POPULARIZED BY: JESS GLYNNE FT. EMELI SANDÉ  
INSTRUMENTAL FROM: EDKARA  
PERFORMED BY: MARIA LE ANN RIVERA

**HAPPIER THAN EVER**

POPULARIZED BY: BILLIE EILISH  
INSTRUMENTAL FROM: SING KING  
PERFORMED BY: MARK LUBERA

**WONDERING**

POPULARIZED BY: OLIVIA RODRIGO  
INSTRUMENTAL FROM: SING KING  
PERFORMED BY: MITZI PIENCENAVES

**LINE WITHOUT A HOOK**

POPULARIZED BY: RICKY MONTGOMERY  
INSTRUMENTAL FROM: SING KING  
PERFORMED BY: KURT AMPAL

**ONLY HOPE**

POPULARIZED BY: MANDY MOORE  
INSTRUMENTAL FROM: PROSOUND KARAOKE BAND  
PERFORMED: JAMIE CARATAO

**YOUR MAN**

POPULARIZED BY: JOSH TURNER  
INSTRUMENTAL FROM: COMBOJAM  
PERFORMED BY: FRANCIS MACATLANG

**NOBELA**

POPULARIZED BY: JOIN THE CLUB  
INSTRUMENTAL FROM: ACOUSTICHEAVEN  
PERFORMED BY: JOSH RABANES

**THE IMPOSSIBLE DREAM**

POPULARIZED BY: LUTHER VANDROSS  
INSTRUMENTAL FROM: 4K VIDEO KARAOKE  
PERFORMED BY: ZARITA AWAL

**ROLLING IN THE DEEP**

POPULARIZED BY: ADELE  
INSTRUMENTAL FROM: MINUSONEPH  
PERFORMED BY: ESPERANZA ESTRADA

**LOVELY**

POPULARIZED BY: BILLIE EILISH FT. KHALID  
INSTRUMENTAL FROM: SING KING  
PERFORMED BY: GEILAN MANGIWET

**HOLY**

POPULARIZED BY: JUSTIN BEIBER FT. CHANCE THE RAPPER  
INSTRUMENTAL FROM: SING KING  
PERFORMED BY: RONA MAE CURATO

**MAPA**

POPULARIZED BY: SB19  
INSTRUMENTAL FROM: COVERSPH  
PERFORMED BY: GABRIEL ABSALON

**FALLIN'**

POPULARIZED BY: ALICIA KEYS  
INSTRUMENTAL FROM: SINGAHIT  
PERFORMED BY: AYA BASSIG



SLU ARTS FEST 2022



SYNOPSIS

It has been a practice for the SLU CCA to dedicate itself to performing and showing its audience how art affects the world's perception, during National Arts Month. With the theme "Art with Heart," the SLU Glee Club delivered their repertoires once more in the Installation Art opening ceremony last March 21, 2022 at SLU's Diego Silang Building to express its welcoming hymn in line with its own music festival. This event has been planned well in advance by the SLU CCA and its branch organizations to exhibit music, dance, drama, and digital arts for Louisian students to enjoy and embrace.

DOCUMENTATIONS



890 LIKES  
8.1K VIEWS

## REPERTOIRE

**ALAGAD NG SINING**

MUSIC BY: NORMITA "BING" RIO-PABLICO

LYRICS BY:

ANGEILA GREFF ARATAS  
JOHN VICTOR GANCHERO  
JAN WILLIAM CHUAINSTRUMENTATION AND FINAL MASTERING BY:  
MR. ETHAN ANDREW VENTURA

PERFORMED BY:

JOHN VICTOR GANCHERO  
RANIEL HORTALEZA  
VINCE LEINAD SISON  
JOHANN RAPHAEL ROSARIO



## SAYAW PILIPINAS



### SYNOPSIS

After two years of darkness in the stage, slowly it is being lit up as performances once again grace its floors. Last March 31, 2022, The SLU Dance Troupe performed once again in person on their dance concert, "Sayaw Pilipinas" which was held at SLU's Giant Steps. To show their support for their CCA mates, The SLU Glee Club sang "Bakya Mo Neneng". It was the start of the return of captivating in person performances by SLU's Center for Culture and the Arts.



**DOCUMENTATIONS****REPertoire****BAKYA MO NENENG**

COMPOSED BY: SANTIAGO SUAREZ AND LEVI CELERIO

PERFORMED BY:

MR. SEBASTIAN ORDUNA

&

MISS ANGELA J. DOMINGUEZ

## SACERDOTAL OF FATHER GILBERT SALES AND THE VISIT OF JUSTICE MARVIC MARIO VICTOR F. LEONEN

### SYNOPSIS

Rev. Fr. Gilbert B. Sales, CICM has showed his support not just to the SLU Glee Club, but to all performing groups of the Center for Culture and the Arts. On this day, he celebrated his Sacerdotal anniversary and the SLU Glee Club together with other performing groups, rendered performances dedicated to him. The SLU Glee club sang the national anthem in the opening and they gave special numbers.

Afterwards, the Supreme Court of the Philippines awarded a Historical Marker to Saint Louis University for its participation in the execution of 2020 and 2021 Bar Examinations. It is the first digital and localized bar examination. This event was held on April 27, 2022 at the SLU Fr. Gever's Hall. There, the SLU Glee Club sang an invocation as well as the national anthem to kickstart the program. They also showcased a chorale version of the song "Tatsulok". In attendance at the awarding were Fr. Gilbert Sales, CICM, SLU's administration, and SLU's School of Law dean and faculty, who represented Saint Louis University. Notable people such as Chief Justice Alexander Gesmundo, Assoc. Justice and 2020/2021 Bar Chairperson Marvic Leonen, and LGU Baguio representatives were also present.

DOCUMENTATIONS



SLU MAIN CAMPUS, BAGUIO CITY

## REPERTOIRE

**LUPANG HINIRANG**

COMPOSED BY: JULIAN FELIPE  
ARRANGED BY: NORMITA "BING" RIO-PABLICO  
PERFORMED BY: THE SLU GLEE CLUB

**KAY GANDA**

COMPOSED BY: RYAN CAYABYAB  
POPULARIZED BY: HAIJI ALEJANDRO  
PERFORMED BY: VINCE SISON

**BAGANI**

COMPOSED BY: ROEL ROSTATA, ARRANGED BY: JUNGEE MARCELO  
POPULARIZED BY: ANTHONY CASTILLO WITH PINOPELLE  
ARRANGED BY: NORMITA "BING" RIO-PABLICO

**MR. SUAVE**

COMPOSED BY: PAROKYA NI EDGAR  
ARRANGED BY: N. ARNEL, A. DE PANO



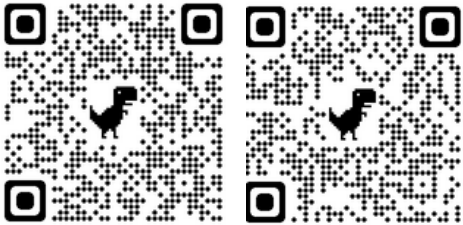
## OYAYI: HIMIG NG PANIBAGONG BUKAS

### SYNOPSIS

As we gradually return to our "new normal," the SLU Glee Club performed live at the SLU CCA Theatre last May 18, 2022. The concert, titled "Oyayi: Himig sa Panibagong Bukas," was attended by family members, friends, alumni, and various SLU employees. Owing to protocol due to the pandemic, slots were limited but the said concert was live streamed on Facebook too. This concert was created as a prelude to welcome face-to-face rehearsals and gradually put everything back in its right place. This live performance also served as the first stage performance for other members who arrived during the pandemic, as well as the very last concert for the Glee Club's graduating members. This concert welcomed the members who hoped for a fresh start and new challenges amidst the pandemic.



DOCUMENTATIONS



942 LIKES  
12.8K VIEWS

## REPERTOIRE

**SA KANYANG PAGLALAYAG**

ARRANGED BY: RONNEL PAZ

**CHUA-AY**

ARRANGED BY: NORMITA "BING" RIO-PABLICO

COMPOSED BY: R. RIVADELO

**I AM BUT A SMALL VOICE**

ARRANGED BY: NORMITA "BING" RIO-PABLICO

COMPOSED BY: ROGER WHITTAKER

**YELLOW BIRD**

ARRANGED BY: ANNA ABELEDA

**MR. SUAVE**

ARRANGED BY: N. ARNEL A. DE PANO

COMPOSED BY: PAROKYA NI EDGAR

**FROM A DISTANCE**

ARRANGED BY: EUDENICE PALARUAN

COMPOSED BY: JULIE GOLD

**FOR THE LONGEST TIME**

ARRANGED BY: KO DUIJVESTIJN

COMPOSED BY: BILLY JOEL

**AMAKABOGERA**

ARRANGED BY: NORMITA "BING" RIO-PABLICO

COMPOSED BY: MAYMAY ENTRATE

**KATAWAN**

ARRANGED BY: NORMITA "BING" RIO-PABLICO

COMPOSED BY: HAGIBIS

**ONE MORE ANGEL IN HEAVEN (JATD)**

ARRANGED BY: ANDREW LLOYD WEBBER

**CLOSE EVERY DOOR (JATD)**

ARRANGED BY: ANDREW LLOYD WEBBER.

**A PHARAOH'S STORY (JATD)**

ARRANGED BY: ANDREW LLOYD WEBBER

**BATHALA (EPIKO)**

WRITTEN BY: PEEJAY BENGWASAN AND JESSICA LADINES-MIRANDILLA,  
MUSIC BY: NORMITA "BING" RIO-PABLICO

**ISANG PAGKAKATAON (EPIKO)**

WRITTEN BY: PEEJAY BENGWASAN AND JESSICA LADINES-MIRANDILLA  
MUSIC BY: NORMITA "BING" RIO-PABLICO

**ATIN CU PUNG SINGSING**

ARRANGED BY: NORMITA "BING" RIO-PABLICO

**UGOY NG DUYAN**

ARRANGED BY: NORMITA "BING" RIO-PABLICO  
COMPOSED BY: LEVI CELERIO

**TATSULOK**

ARRANGED BY: ANGELO DIAMOS  
COMPOSED BY: ROM DONGETO  
POPULARIZED BY: BAMBOO

**WHEN YOU BELIEVE**

ARRANGED BY: NORMITA "BING" RIO-PABLICO

**BAGANI**

ARRANGED BY: NORMITA "BING" RIO-PABLICO  
COMPOSED BY: ROEL ROSTATA, ARRANGED BY JUNGEE MARCELO,  
POPULARIZED BY: ANTHONY CASTILLO WITH PINOPELLA



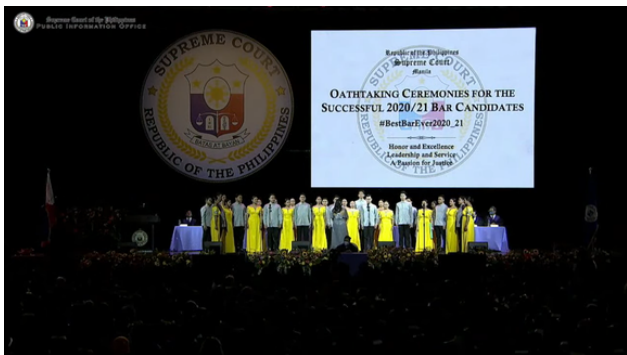
## OATHTAKING CEREMONIES FOR SUCCESSFUL 2021/22 BAR CANDIDATES

### SYNOPSIS

During the awarding of the Supreme Court of the Philippines to Saint Louis University of the Historical Marker, for taking part in executing the bar examinations, Supreme Court Associate Justice Marvic Leonen, heard the chorale version of "Tatsulok". The Bar chairperson then picked the song to be performed by the SLU Glee Club at the oathtaking of the successful Bar 2020-2021 passers on May 2, 2022, at the Mall of Asia Arena. The said performance trended on social media platforms. It garnered more than 100,000 views on Facebook. They also performed their rendition of "Bagani". For the first time in history, a contemporary song was played during the oathtaking of the successful Bar candidates which a former Supreme Court spokesperson said "contextualized" the new lawyers' new roles.



DOCUMENTATIONS



REPERTOIRE

TATSULOK

COMPOSED BY: DONGETO  
ARRANGED BY: JOHN ANGELO DIAMOS

BAGANI

COMPOSED BY: ROEL ROSTATA  
ARRANGED BY: NORMITA "BING" RIO-PABLICO



80,316 VIEWS



3.1K LIKES  
107K VIEWS

## **GEODETC ENGINEERS OF THE PHILIPPINES 47TH ANNUAL NATIONAL DIRECTORATE MEETING AND CONVENTION**

### **SYNOPSIS**

The Geodetic Engineers of the Philippines, Inc. held its 47th Annual National Convention at the Baguio Convention Center. The SLU Glee Club was honored to be invited to sing the national anthem, Baguio hymn and to give an intermission number to entertain and welcome the country's geodetic engineers in the city of pines. Most of the songs they sang were from their "Oyayi" concert repertoire such as the chorale version of "Mr. Suave". The group enjoyed the stage as their audience applauded and smiled all the way until the performance ended.

**DOCUMENTATIONS****REPERTOIRE****LUPANG HINIRANG**

COMPOSED BY: JULIAN FELIPE

ARRANGED BY: NORMITA "BING" RIO-PABLICO

PERFORMED BY: THE SLU GLEE CLUB

**BAGUIO HYMN**

COMPOSED BY: ARNULFO CADANGEN

PERFORMED BY: THE SLU GLEE CLUB

**THIS IS ME**

COMPOSED BY: BENJ PASEK AND JUSTINE PAUL

**CHERISH THE LEGACY**

ARRANGED BY: AUDENICE PALARUAN

TRANSLATED BY: ETHAN ANDREW VENTURA

**I AM BUT A SMALL VOICE**

COMPOSED BY: ROGER WHITTAKER

ARRANGED BY: NORMITA "BING" RIO-PABLICO

**FROM A DISTANCE**

COMPOSED BY: JULIE GOLD

ARRANGEDBY: EUDENICE PALARUAN



**MR. SUAVE**

COMPOSED BY: PAROKYA NI EDGAR  
ARRANGED BY: N. ARNEL, A. DE PANO

**BAGANI**

COMPOSED BY: MR. ROEL ROSTATA  
ARRANGED BY: MRS. NORMITA "BING" RIO-PABLICO

## SLU SERVICE AWARDS

### SYNOPSIS

After a Thanksgiving Mass, Saint Luis University gave honor to 173 employees during the 2022 SLU Service Awards which was held at the Baguio Country Club on June 13, 2022. The SLU Glee Club graduating members took part in this salient event. To give honor to the country and their alma mater, they sang the national anthem and the SLU hymn. They also rendered an intermission number where one of the songs they beautifully sang was "Cherish the Legacy". On this day, the graduating members of batch 2021-2022 a.k.a the SLU Glee Club's "Magic 11", gave their last performance as members of the group.

**DOCUMENTATIONS****REPERTOIRE****LUPANG HINIRANG**

COMPOSED BY: JULIAN FELIPE

ARRANGED BY: NORMITA "BING" RIO-PABLICO

PERFORMED BY: THE SLU GLEE CLUB

**THIS IS ME**

COMPOSED BY: BENJ PASEK AND JUSTINE PAUL

**CHERISH THE LEGACY**

ARRANGED BY: AUDENICE PALARUAN

TRANSLATED BY: ETHAN ANDREW VENTURA

**BAGANI**

COMPOSED BY: MR. ROEL ROSTATA

ARRANGED BY: MRS. NORMITA "BING" RIO-PABLICO

## FEAST OF SAINT ALOYSIUS GONZAGA

### SYNOPSIS

To celebrate the feast of Saint Aloysius Gonzaga, a program was held at the SLU Fr. Gever's Hall on June 21, 2022. Here people with notable contribution to the parish were recognized, memories were reminisced, and the faithful life of Saint Aloysius Gonzaga was once again reflected on. To give more color to the celebration, The SLU Glee Club and the SLU Dance Troupe gave captivating performances to entertain the attendees.



**DOCUMENTATIONS****REPERTOIRE****LEAVES**

COMPOSED BY: BEN&BEN

ARRANGED BY: NORMITA "BING" RIO-PABLICO

**CHATTANOOGA**

LYRICS BY: MACK GORDON

MUSIC BY: HARRY WARREN

ARRANGED BY: MAC HUFF

PERFORMED BY: THE SLU GLEE CLUB

## **29TH ACCOUNTING TEACHERS CONFERENCE (ATC) OF THE NATIONAL ASSOCIATION OF THE CERTIFIED PUBLIC ACCOUNTANTS IN EDUCATION (NACPAE)**

### **SYNOPSIS**

The 29th Accounting Teachers Conference held on June 25-27, 2022, at the Hotel Supreme Convention Center in Baguio City. It was hosted by the National Association of CPAs in Education (nACPAE). The event was attended by leading CPAs in education and individuals from various professions. The Professional Regulatory Board of Accountancy (BOA) and its chair, Hon. Noe Quiñanola was also in attendance. The SLU Glee Club was invited to lead the people into an invocation and sing the national anthem. An intermission number was also rendered by the group, which enthralled the attendees of the event.

## DOCUMENTATIONS



## REPERTOIRE

**PRAYER TO OUR LADY**

COMPOSED BY: NIKKO OLIVER VILLANUEVA

PERFORMED BY: THE SLU GLEE CLUB

**LUPANG HINIRANG**

COMPOSED BY: JULIAN FELIPE

ARRANGED BY: NORMITA "BING" RIO-PABLICO

PERFORMED BY: THE SLU GLEE CLUB

**BAGANI**

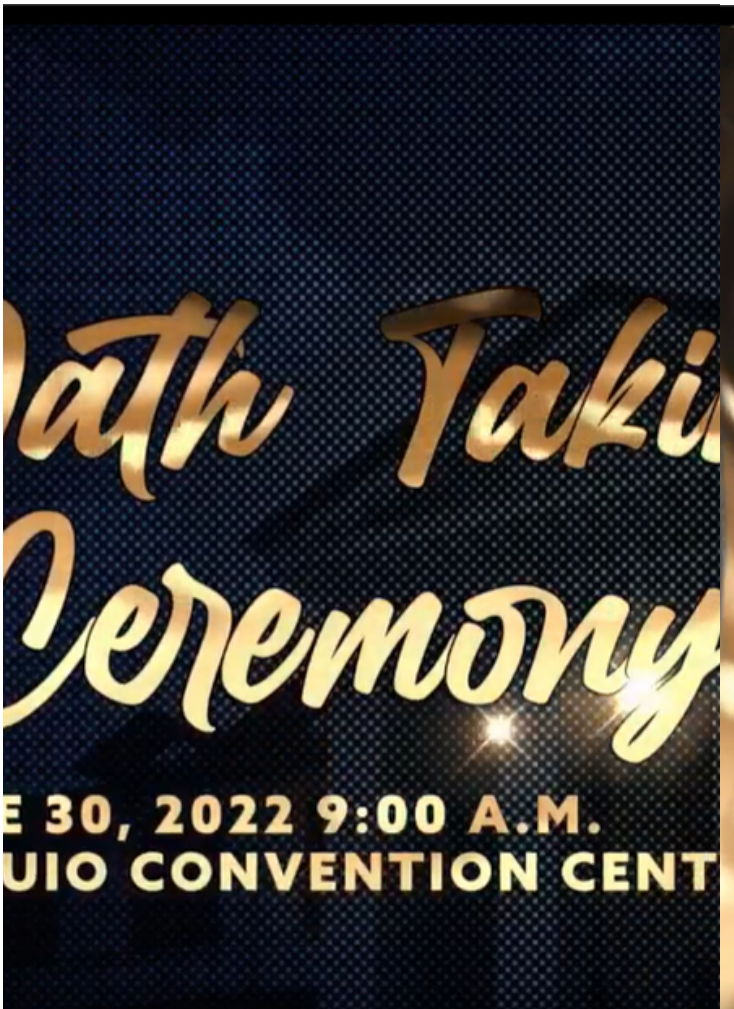
ARRANGED BY: NORMITA "BING" RIO-PABLICO

POPULARIZED BY: ANTHONY CASTILLO

PERFORMED BY: THE SLU GLEE CLUB



## OATHTAKING OF NEWLY ELECTED OFFICIALS



### SYNOPSIS

The SLU Glee Club, and SLU Marching Band was invited to participate and perform at the Baguio Convention Center on June 30, 2022, for one of Baguio Municipal's most anticipated events: the Oath-taking ceremony for newly elected city officials for the term 2022-2025. The SLU Glee Club executed intermission pieces during opening ceremony. Smiles, support, and love poured in from the politician's own family and supporters during this event. As Saint Louis University continues to support the city's endeavors, the SLU Center for Culture and the Arts makes every effort to engage and build support for those who will govern the city for the welfare of all.



DOCUMENTATIONS



BAGUIO CONVENTION CENTER

420 LIKES  
17K VIEWS

## REPERTOIRE

**LUPANG HINIRANG**

COMPOSED BY: JULIAN FELIPE  
ARRANGED BY: NORMITA "BING" RIO-PABLICO  
PERFORMED BY: THE SLU GLEE CLUB

**BAGUIO HYMN**

COMPOSED BY: ARNULFO CADANGEN  
PERFORMED BY: THE SLU GLEE CLUB

**CHATTANOOGA CHOO CHOO**

LYRICS BY: MACK GORDON  
MUSIC BY: HARRY WARREN  
ARRANGED BY: MAC HUFF  
PERFORMED BY: THE SLU GLEE CLUB

**BAGANI**

ARRANGED BY: NORMITA "BING" RIO-PABLICO  
POPULARIZED BY: ANTHONY CASTILLO  
PERFORMED BY: THE SLU GLEE CLUB

**LIPARIN**

LYRICS BY: ROMMEL DAN RIOPAY  
MUSIC AND ARRANGED BY: NORMITA "BING" RIO-PABLICO  
PERFORMED BY: THE SLU GLEE CLUB

## OST VII: TIMESKIP ARC



### SYNOPSIS

SLU Concert Orchestra made its spectacular comeback on stage for their live concert on July 8, 2022 at the SLU CCA Theater, with the participation of the SLU Glee Club and the SLU Marching Band. This concert was entitled "OST VII: Re: Assemble: Timeskip Arc,". The SLU Glee Club jumped on the opportunity to show its support for the organization's comeback via virtual repertoires and a live performance by one of its current members. The Orchestra's lineup was well received by its audience on-site and via Facebook livestream. They also received support coming from various organizations of the SLU Center for Culture and the Arts.

DOCUMENTATIONS



SAINT LOUIS UNIVERSITY THEATRE

411 LIKES  
5.6K VIEWS



## REPERTOIRE

**PRAYER TO OUR LADY**

COMPOSED BY: NIKKO OLIVER VILLANUEVA

PERFORMED BY: THE SLU GLEE CLUB

**NATIONAL ANTHEM (ALL FEMALE)**

COMPOSED BY: JULIAN FELIPE

ARRANGED BY: NORMITA "BING" RIO-PABLICO

PERFORMED BY: THE SLU GLEE CLUB

**ISABELA'S LULLABY**

COMPOSED BY: TAKAHIRO OBATA

ARRANGED BY: Y.M. JAVIER

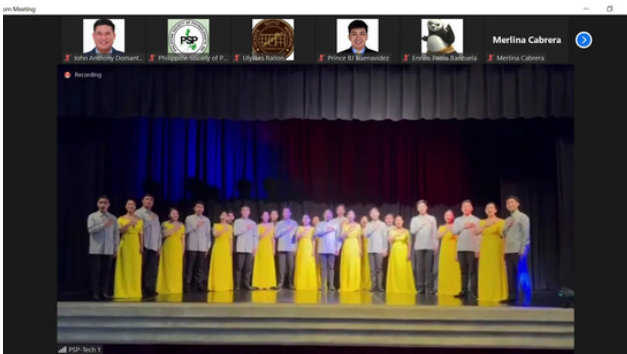
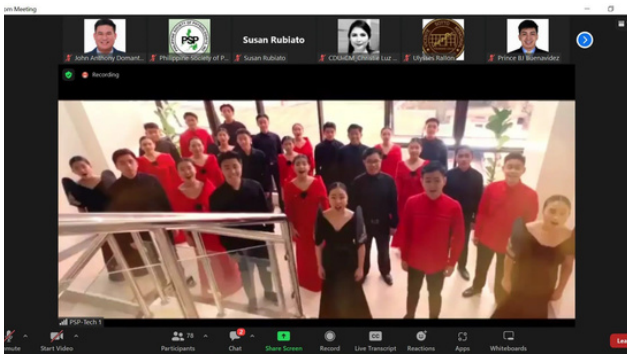
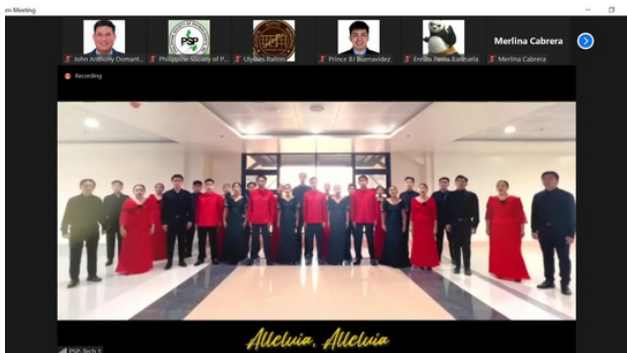
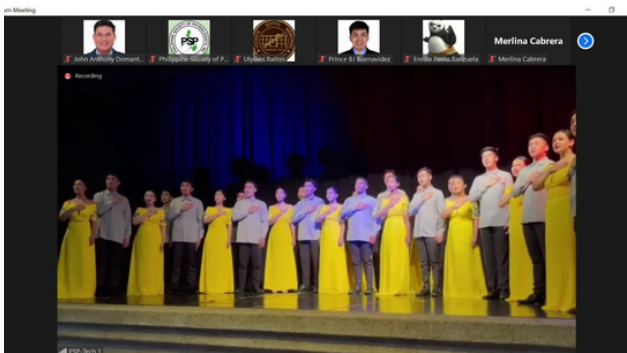
PERFORMED BY: NIANNE BEATRICE BALMORES

## 41ST ANNUAL NATIONAL CONVENTION PHILIPPINE SOCIETY OF PHYSIOLOGISTS

### SYNOPSIS

The SLU CCA's Glee Club offered its support to the 41st Annual National Convention of the Philippine Society of Physiologist, Inc., virtually through Zoom on July 8-9, 2022, in partnership with Saint Louis University School of Medicine. The theme was "The World Inside of Us." Immunophysiology: Its Regulation and Dysregulation. As the group wishes for more collaborations with organizations outside the university, the SLU Center for Culture and the Arts is more than happy to exhibit its presence and support for the school's endeavor.

DOCUMENTATIONS



REPERTOIRE

MAJESTY AND GLORY OF YOUR NAME

COMPOSED BY: LINDA LEE JOHNSON

ARRANGED BY: TOM FETKE

“LUPANG HINIRANG”

COMPOSED BY: JULIAN FELIPE

ARRANGED BY: NORMITA “BING” RIO-PABlico

PERFORMED BY: THE SLU GLEE CLUB

# ANTENA ERASMUS: TRAINING OF TRAINERS CONFERENCE 2 & ANTENA ERASMUS: INTERNATIONALISATION OF HIGHER EDUCATION OF THE PHILIPPINES

## SYNOPSIS



Saint Louis University once again took advantage of a historic chance for the participation of The Commission on Higher Education International Affairs Staff (IAS), CHED Cordillera Administrative Region (CAR), Benguet State University, and our very own university to the 5-day ANTENA Internationalization and Globalization-Training of Trainers Conference at the SLU Fr. Gevers Hall. The SLU Glee Club, SLU Dance Troupe, and SLU Concert Orchestra made sure to participate in this event, exhibiting the Cordilleran legacy through their own repertoires. The SLU Glee Club made sure to showcase their hymn and ethnic performance oeuvre for two days, last July 11-12, 2022. As the group continuously show its support for the school's endeavor, it hopes for greater collaboration not just in the Philippines, but also internationally.



## DOCUMENTATIONS



## REPERTOIRE

## DAY 1:

## CHUA-AY

MELODIC ADAPTATION FROM: R. RIVADELO  
ARRANGED BY: NORMITA "BING" PABLICO  
PERCUSSION: ETHAN ANDREW C. VENTURA

## DAY 2:

## AMAMI

COMPOSED BY: NORMITA "BING" RIO-PABLICO  
ARRANGED BY: NORMITA "BING" RIO-PABLICO  
PERFORMED BY: THE SLU GLEE CLUB

## LUPANG HINIRANG

COMPOSED BY: JULIAN FELIPE  
ARRANGED BY: NORMITA "BING" RIO-PABLICO  
PERFORMED BY: THE SLU GLEE CLUB

# 2022 CORDILLERA DAY CELEBRATION (DSWD-CAR)



## SYNOPSIS

On the 35th Cordillera Day celebration last July 15, 2022 at the Baguio Convention Center, the SLU Glee Club and SLU Dance Troupe took the stage to showcase how lively and dignified Cordillera is. The SLU Glee Club once again performed hymns and ethnic performances for our magnificent Cordillera. The SLU Center for Culture and the Arts strives to bring honor and respect to Cordillera traditions by allowing its organizations to exhibit what it genuinely means to perform with dignity and honor. Agbiyag Cordillera!



DOCUMENTATIONS



BAGUIO CONVENTION CENTER

104 LIKES  
17K VIEWS

## REPERTOIRE

**AMAMI**

COMPOSED BY: NORMITA "BING" RIO-PABLICO  
ARRANGED BY: NORMITA "BING" RIO-PABLICO  
PERFORMED BY: THE SLU GLEE CLUB

**LUPANG HINIRANG**

COMPOSED BY: JULIAN FELIPE  
ARRANGED BY: NORMITA "BING" RIO-PABLICO  
PERFORMED BY: THE SLU GLEE CLUB

**CORDILLERA HYMN**

COMPOSED BY: JULIA SAGANIB AND JUANITA MADARANG  
ARRANGED BY: NORMITA "BING" RIO-PABLICO  
PERFORMED BY: THE SLU GLEE CLUB

**CHUA-AY**

COMPOSED BY: FIDEL G. CALALANG  
ARRANGED BY: NORMITA "BING" PABLICO  
PERFORMED BY: THE SLU GLEE CLUB



## ACADEMIC SESSION 2022: GAWAD SAN LUIS FOR EMPLOYEES AND TRIBUTE TO THE RETIREES

### SYNOPSIS

Saint Louis University's Academic Session is the academic year's highlight. In this event, remarkable employees are awarded and recognized. The Academic Session 2022 was held at SLU's Prince Bernhard Gym, last July 29, 2022. The SLU Glee Club sang the invocation and the national anthem to open the program. The group's ladies also gave the opening number together with the SLU Dance troupe. As employees were being awarded for their notable works, selected members of the SLU Glee Club serenaded them with ear melting tunes. After all that, the SLU Glee Club and the SLU Dance Troupe gave one last memorable performance at the end of the program to culminate the day's event.

## DOCUMENTATIONS



## REPERTOIRE

**PAMBANSANG DALANGIN**

COMPOSED BY: LUTGARDO LABAD

ORIGINAL PRAYER BY: CONNIE ALABAS

ORIGINAL CONCEPT BY: CECILE GUIDATE ALVARES

ARRANGED BY: JOSHIBIAH "BUTCH" GOA DE JUAN

**LUPANG HINIRANG**

COMPOSED BY: JULIAN FELIPE

ARRANGED BY: NORMITA "BING" RIO-PABLICO

PERFORMED BY: THE SLU GLEE CLUB

**CHUA-AY**

COMPOSED BY: FIDEL G. CALALANG

ARRANGED BY: NORMITA "BING" PABLICO

PERFORMED BY: THE SLU GLEE CLUB

**TAYONG MGA PILIPINO**

COMPOSED BY: RYAN CAYABYAB

ARRANGE BY: NORMITA "BING" RIO-PABLICO

## **PAGSALUBONG: REV. FR. GILBERT SALES' 60TH BIRTHDAY CELEBRATION**

### **SYNOPSIS**

One of the most anticipated performances for the Center for Culture and the Arts takes place on August 5 of each year. It is, after all, the birthday of our School President, Rev. Fr. Gilbert Sales, CICM. This year, the administration together with the SLU Glee Club surprised Father Sales on his birthday with a "Birthday Salubong". Mrs. Normita "Bing" Rio-Pablico's arrangement of Maligayang Bati was performed by the SLU Glee Club when the administration welcomed him at the Admin Building. To show gratefulness to God for Father Sales' life, the people present seized the opportunity and prayed over him. After that, the room was filled with love and appreciation for Father Sales. Several staff gave him birthday greetings and a cake on which he blew his candle. Father Sales then took every chance to thank the people who greeted him. The joyous Salubong, then concluded with another birthday song.

**DOCUMENTATIONS****REPERTOIRE:****MALIGAYANG BATI**

ARRANGED BY: NORMITA "BING" RIO-PABLICO



## **OBRAMAESTRANG PIGING SA KAARAWAN NG MAHAL NAMING FATHER GILBERT**

### **SYNOPSIS**

The Center for Culture and the Arts will not go another day without honoring the 60th birthday of our most devoted school President, Rev. Fr. Gilbert Sales, CICM. After his birthday salubong at the administration building, this day will not be complete without a Thanksgiving Mass. Following the mass, Filipino-themed program, Obra-maestrang Piging sa Kaarawan ng Mahal naming Father Gilbert took place at SLU's Gevers Hall. In this program, the SLU Glee Club gracefully sang songs of Father Gilbert's favorite OPM tunes as a symbol of their affection and genuine greetings for him, as he has always offered everlasting support to the group. These are the days and events that the CCA will remember and enjoy as they perform on stage, making not only Father Gilbert happy but everyone..

**DOCUMENTATIONS****REPERTOIRE:****HANGANG SA DULO NG WALANG HANGGAN**

COMPOSED BY: GARY VALENCIANO

ARRANGED BY: NORMITA "BING" RIO - PABLICO

**MINSAN ANG MINAHAL AY AKO**

MUSIC BY: RYAN CAYABYAB

ARRANGED BY: NORMITA "BING" RIO - PABLICO

**INIIBIG KITA**

MUSIC BY: RYAN CAYABYAB

**MALIGAYANG BATI**

ARRANGED BY: NORMITA "BING" RIO - PABLICO