

AY 2021 - 2022



Saint Louis University

# Relationships with Regional NGOs and Government for SDG Policy



**17** PARTNERSHIPS  
FOR THE GOALS



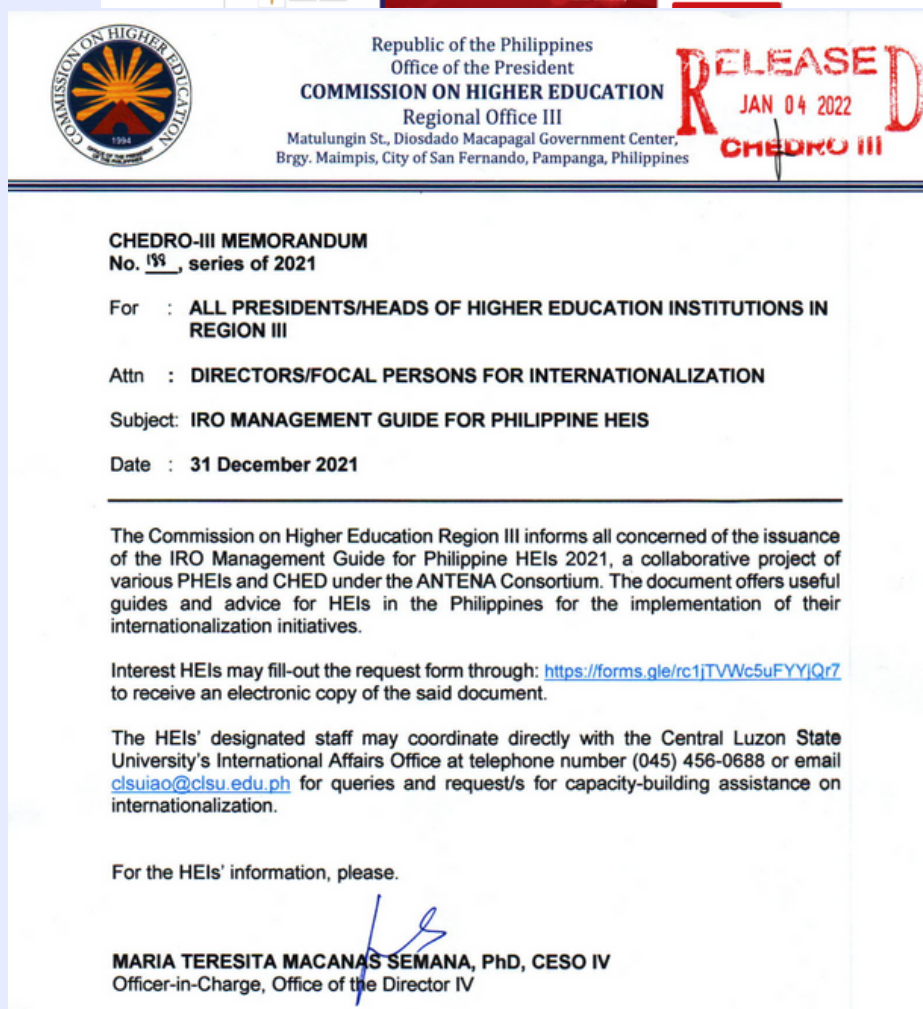
# SLU Participation in the Development of IRO Management Guide for Philippine HEIs

Published in the **ANTENA Website**:

<https://www.antena-project.eu/resources/iro-management-guide-philippine-heis-2021>



The screenshot shows the ANTENA website interface. At the top, there is a navigation bar with links: Home, About ANTENA, News, Events, Conferences, Network, and Resources. Below the navigation bar is a large image of a hand-drawn diagram on a piece of paper, with a blue pen resting on it. The diagram appears to be a flowchart or organizational chart. Below the image, there is a red banner with the text "RESOURCES IRO MANAGEMENT GUIDE FOR PHILIPPINE HEIS 2021". To the left of the banner is the ANTENA logo. To the right of the banner is a section titled "LATEST NEWS" with three news items: "ANTENA Kick-off meeting", "ANTENA HEI partners hold first national roundtable discussion", and "Philippine Commission on Higher Education commits support for ANTENA project".



The screenshot shows a CHEDRO-III Memorandum from the Commission on Higher Education, Region III. The memorandum is dated 31 December 2021 and is addressed to all Presidents/Heads of Higher Education Institutions in Region III. The subject is the IRO Management Guide for Philippine HEIs. The memorandum informs all concerned of the issuance of the IRO Management Guide for Philippine HEIs 2021, a collaborative project of various PHEIs and CHED under the ANTENA Consortium. The document offers useful guides and advice for HEIs in the Philippines for the implementation of their internationalization initiatives. Interest HEIs may fill-out the request form through: <https://forms.gle/rc1TjVWc5uFYjQr7> to receive an electronic copy of the said document. The HEIs' designated staff may coordinate directly with the Central Luzon State University's International Affairs Office at telephone number (045) 456-0688 or email [clsuaio@clsu.edu.ph](mailto:clsuaio@clsu.edu.ph) for queries and request/s for capacity-building assistance on internationalization. For the HEIs' information, please. The memorandum is signed by Maria Teresita Macanas Semana, PhD, CESO IV, Officer-in-Charge, Office of the Director IV.

Saint Louis University as part of the ANTENA project participated in the development of the IRO Management Guide for Philippine HEIs 2021. The said manual is now a reference of the Commission on Higher Education on its internationalization initiatives.

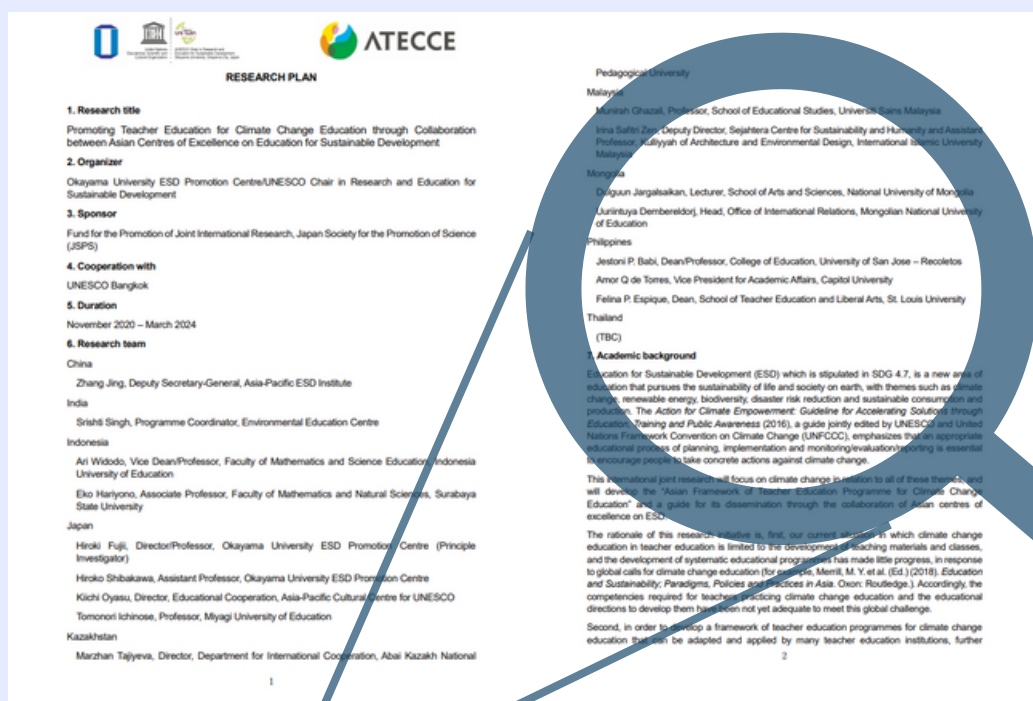


# SLU contribution to the Asian Framework of Teacher Education Programme for Climate Change Education

Published in **ABAI KAZAKH NATIONAL PEDAGOGICAL UNIVERSITY**

[https://sdgs.abaiuniversity.edu.kz/uploads/related\\_materials/Research-Plan\\_ATECEE\\_17.2.pdf](https://sdgs.abaiuniversity.edu.kz/uploads/related_materials/Research-Plan_ATECEE_17.2.pdf)

Saint Louis University is part of the team that conducted a research on Promoting Teacher Education for Climate Change Education through Collaboration between Asian Centres of Excellence on Education for Sustainable Development, which aimed at developing an Asian Framework of Teacher Education Programme for Climate Change Education through the collaboration of Asian centres of excellence on Education for Sustainable Development (ESD).



## Philippines

Jestoni P. Babi, Dean/Professor, College of Education, University of San Jose – Recoletos

Amor Q de Torres, Vice President for Academic Affairs, Capitol University

Felina P. Espique, Dean, School of Teacher Education and Liberal Arts, St. Louis University





# SLU participation in CEAP and PEAC policy making

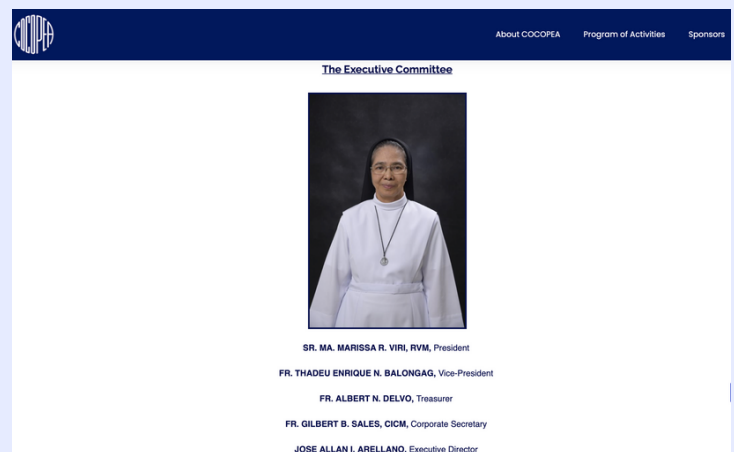
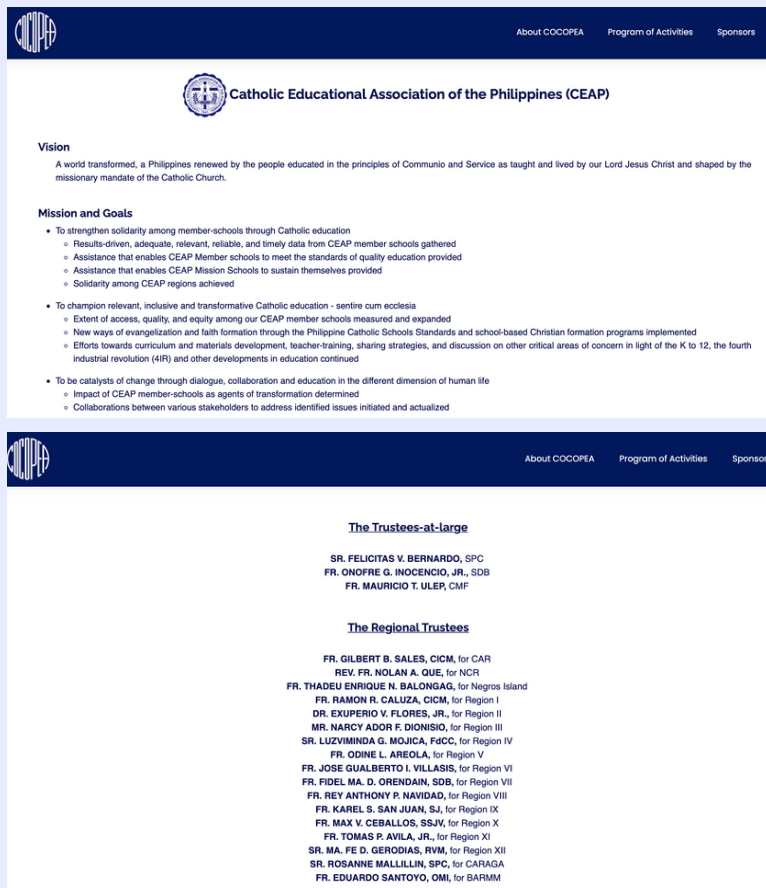
Published in **COCOPEA, PEAC, and CEAP Website and Facebook pages**

<http://cocopea.org/ceap.html>

<https://www.facebook.com/ceapcarph/>

<https://www.facebook.com/peacRSCARofficial/>

Saint Louis University actively participates in the policy-making of SDG-related concerns through its University President, Rev. Fr. Gilbert B. Sales, CICM, PhD, serving as the corporate secretary of the Catholic Educational Association of the Philippines (CEAP), the CEAP-Cordillera Administrative Region (CAR) Regional Trustee, and Private Education Assistance Committee (PEAC)-CAR Regional Director.



17 PARTNERSHIPS FOR THE GOALS

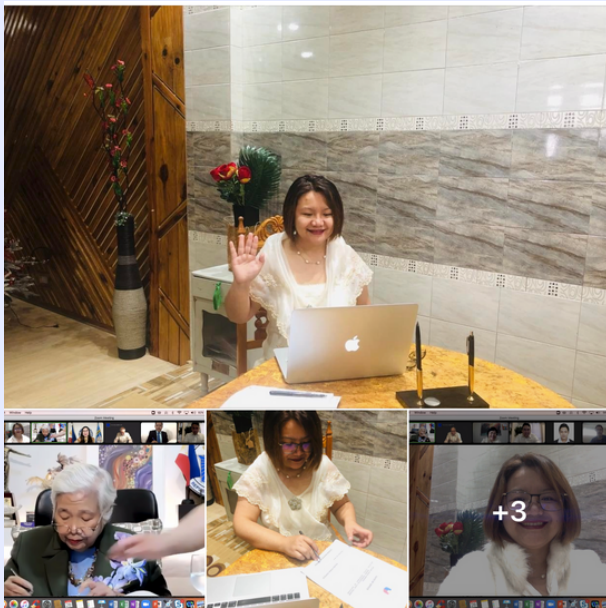


# SLU participation in DepEd and CHED policy making bodies

Published in the **SLU Facebook page**

[https://www.facebook.com/slu.edu.ph/posts/pfbid0BFofJKPEap7wQnh81ZZSjZzksSG1WgE9be1BAFzn\\_nO5ZALsUYB5H1cCaAeWNHVRql](https://www.facebook.com/slu.edu.ph/posts/pfbid0BFofJKPEap7wQnh81ZZSjZzksSG1WgE9be1BAFzn_nO5ZALsUYB5H1cCaAeWNHVRql)

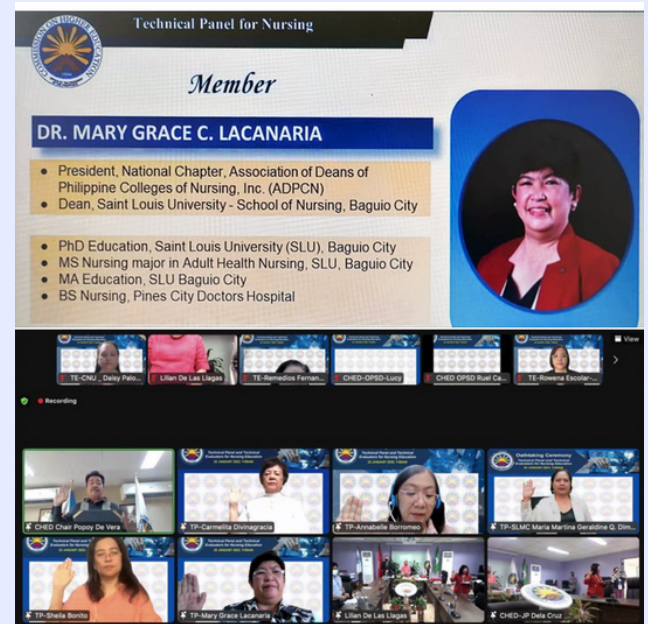
<https://www.facebook.com/slu.edu.ph/posts/pfbid0TBwKgBCDtU65o5oYmLG2x8jW8nHrfqEQZ71hqqN2MoGRbphTTjiniG8CCtMfJbql>



As a Higher Education Institution with Centers of Excellence and Centers of Development Programs, Saint Louis University actively participates in the policy-making of SDG-related concerns through Felina P. Espique, PhD as Luzon Representative of the Teacher Education Council (TEC) of the Department of Education and Mary Grace C. Lacanaria, PhD as a member of the Commission on Education Technical Panel for Nursing Education (TPNE).

Dr. Espique participated in the series of meetings of the TEACHER EDUCATION COUNCIL for the crafting of the Implementing Rules and Regulations (IRR) of Republic Act 11713. Dr. Espique also served as one of the presenters and facilitators during the RA 11713 IRR Public Consultation. Republic Act No. 11713 (RA 11713) also known as the "Excellence in Teacher Education Act" is the declared policy of the state to protect and promote the right of all citizens to quality education at all levels and to take appropriate steps to make such education accessible and relevant to all.

Dr. Lacanaria, on the other hand, works with the TPNE, which is tasked with the formulation of a roadmap for the development of disciplinary and degree programs and with the review of the revision and updating of Policies Standards and Guidelines (PSGs) based on the policy direction set by the Commission in its activities.





# SLU participation in the crafting of PROJECT HERITAGE 101 of CHED-CAR

Published in **SLU STELA Facebook page**

<https://www.facebook.com/SLU.arangkadaSTELA/posts/pfbid02cYvrwrUc9eFBx7hS196qBwconZoH6JCMwdJnbED4K78RZwkFyrh8RNQeC2EPw92Ql>

Saint Louis University actively participated in the planning and crafting of the PROJECT HERITAGE 101 of the Commission on Higher Education - Cordillera Administrative Region (CHED-CAR). Project Heritage supports CMO 02, S. 2019 with subject on Integration of Indigenous Peoples' (IP) Studies/ Education into the relevant higher education curricula. Project HERITAGE means Higher Education Regional Integration and Teaching of Appropriate, Genuine and Exhaustive Studies in Indigenous Peoples.



# SLU participation in the joint-project R.E.A.C.H

Published in **CHED-CAR Facebook page**

<https://www.facebook.com/chedcar.official/posts/pfbid0VroCVZQeKUoCfcB1yZedGbwqSzBPvVW9TteS5fFnWR7HdmZyekiHkkESL7JMzJFjl>

Saint Louis University took the lead in crafting and disseminating the Guidelines on the implementation of Realizing Educational Aims Thru Community-Based Home School (PROJECT R.E.A.CH) during the COVID-19 Pandemic through Dr. Felina P. Espique, the Dean of the School of Teacher Education and Liberal Arts of Saint Louis University and Regional Chair of the Philippine Association for Teachers and Educators (PAFTE) in Academic Years 2020-2022.

The said event was hosted by Saint Louis University and participated by PAFTE-CAR officers headed by Dr. Felina Espique and deans of TEIs in Baguio and LT.

The ceremonial signing also highlighted the significant events of the current pandemic that highly impacted the present learning and education system which was expressed by Rev. Fr. Gilbert Sales, SLU President, as "Difficult times and crisis that needs to be responded with, through adoption on the evolving environment" during his welcome remarks.

#chedCAREs



PROJECT REACH is a Joint Circular Memorandum among the following agencies: Commission on Higher Education, Department of Education, Department of Interior and Local Government, and Department of Health. PROJECT R.E.A.CH was launched on December 7, 2021 at the DepEd Regional Hall during the celebration of the Education Week. The MOA signing took place on March 1, 2022. The goal of the project is to encourage and engage Field Study (FS) Students of Teacher Education Institutions (TEIs) and other stakeholders to assist basic education learners continue their learning amidst the pandemic. This specifically aims to engage the FS students to serve as mentors and tutors, as manang (older sister) and manong (older brother), to selected DepEd learners in the various provinces of the Cordillera Administrative Region. This is to ensure that these would-be teachers in the various TEIs of the region will help promote and make the "No Cordillera Child Left Behind" a reality.

