

AY 2021 - 2022



Saint Louis University

# Participation in Policy Making to Address Poverty



**1 NO  
POVERTY**



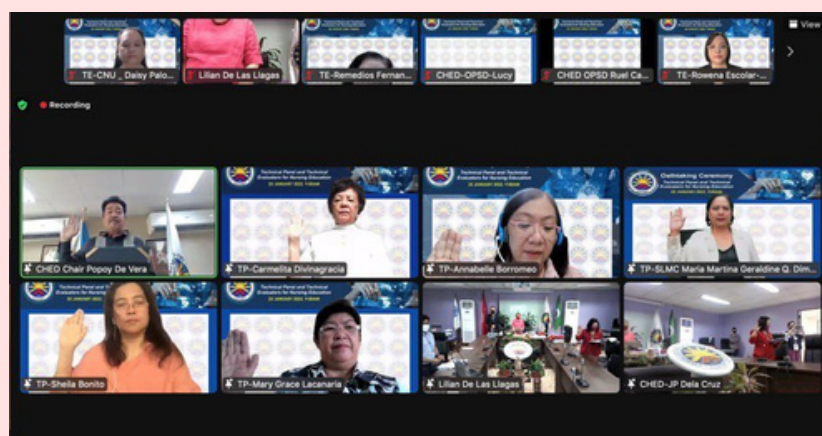
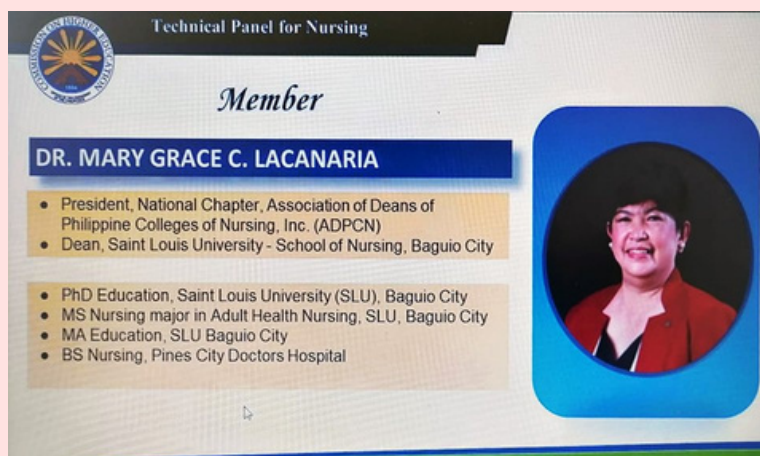
# SLU Participation in policy making: poverty alleviation through education

Dr. Mary Grace C. Lacanaria, (Former) SON Dean  
**Member, Technical Panel for Nursing Education (TPNE)**

Published in: **Saint Louis University Official Facebook Page**

at URL:

<https://www.facebook.com/slu.edu.ph/posts/pfbid02Wn5zv84bNcTaHXCLevYcLPucfTiV6aQJRHMdsSx1DPGqJvJnxgsX42BgRA31tqpCl>



SLU School of Nursing Dean Mary Grace Lacanaria, PhD was appointed and inducted as a Member of the Commission on Higher Education(CHED) Technical Panel for Nursing Education (TPNE) last January 25, 2022 with a 4-year term of office.

The TPNE is a panel of individuals highly recognized in the field of nursing tasked with the formulation of a roadmap for the development of disciplinal and degree programs; review, revision and updating of Policies, Standards, and Guidelines (PSG's) based on the policy direction set by the Commission in its activities. The TPNE serve as advisory and recommendatory bodies for nursing education whose recommendations are subject to the Commission En Banc approval.

**Related Article/Public Document:**

<https://chedro3.ched.gov.ph/2022/06/08/the-technical-panel-and-technical-evaluators-for-nursing-program/>

1 NO  
POVERTY





# SLU Participation in policy making: poverty alleviation through education

Dr. Felina P. Espique, STELA Dean  
**Member, Teacher Education Council (TEC)**

Published in: **Saint Louis University Official Facebook Page**

at URL:

<https://www.facebook.com/slu.edu.ph/posts/pfbid0BWyeF28zg5ZnM1UZ9oNHcUpm8tFR3waUhc6B6m6gCYZzKCjqoDdXRvyVgQgjq4Zsl>



Pursuant to the provisions of existing laws, SLU School of Teacher Education and Liberal Arts Dean Felina Panas Espique, PhD was appointed as one of the members of the Teacher Education Council (TEC) of the Department of Education, representing Luzon. She was inducted to office by Secretary Leonor M. Briones on January 28, 2022. The Teacher Education Council is composed of eleven (11) members with the Secretary of Education, Culture and Sports as ex officio chairman, and three (3) other ex officio members, namely: a Commissioner of the Commission on Higher Education (CHED), a representative of the National Commission on Culture and Arts (NCCA), and the Chairman of the Professional Regulations Commission (PRC). Dr. Espique is one of the seven (7) regular members of the Council appointed by the President of the Republic of the Philippines.

**Related Article/Public Document:**

<https://www.officialgazette.gov.ph/1994/08/04/republic-act-no-7784/>

1 NO  
POVERTY



# SLU Participation in policy making: poverty alleviation through education

Published in: **CHED Cordillera Facebook page**

at URL:

<https://www.facebook.com/chedcar.official/posts/pfbid0VroCVZQeKUoCfcB1yZedGbwqSzBPvVW9TteS5fFnWR7HdmZyekiHkkESL7JMzJFjl>



FELINA P. ESPIQUE, PhD; SHIVANEE A. DOLO, PhD; GEOFFREY S. KIDLO, PhD  
- The three faculty represented Saint Louis University in the planning and crafting of the PROJECT HERITAGE 101 of the Commission on Higher Education - Cordillera Administrative Region (CHED-CAR). Project Heritage supports CMO 02, S. 2019 with subject on Integration of Indigenous Peoples' (IP) Studies/ Education into the relevant higher education curricula. Project HERITAGE means Higher Education Regional Integration and Teaching of Appropriate, Genuine and Exhaustive Studies in Indigenous Peoples.

## Related Article/Public Document:

- <https://fb.watch/gApNkJ91is/>

## Supporting Documents:

- [Programs and Invitations](#)



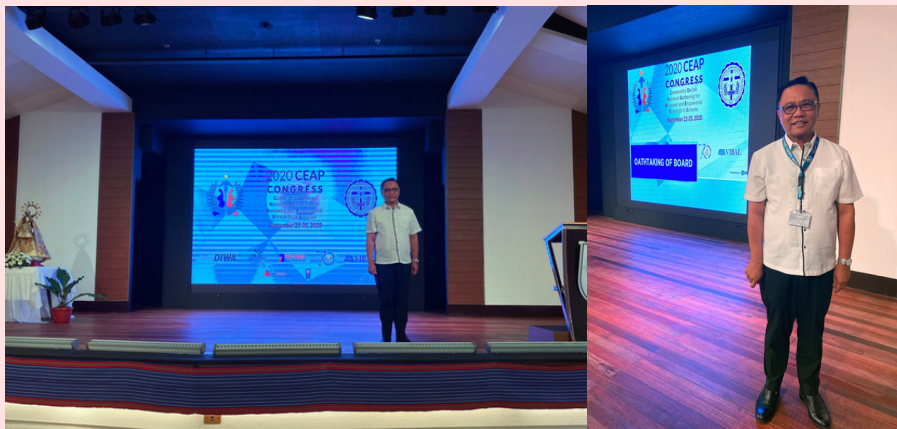
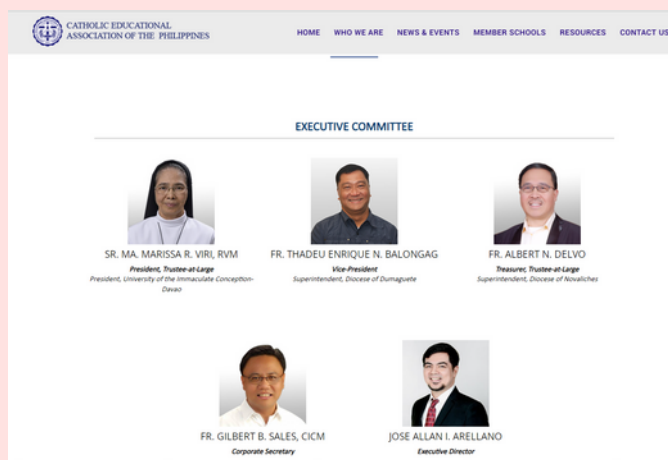


# SLU Participation in policy making: poverty alleviation through education

Rev. Fr. Gilbert B. Sales, CICM, University President  
**Executive Committee Member, Catholic Education Association of the Philippines (CEAP)**

Published in: **CEAP Website**  
at URL: <https://www.ceap.org.ph/who-we-are/board-of-trustees>

Published in: **SLU Facebook Page**  
at URL:  
<https://www.facebook.com/slu.edu.ph/posts/pfbid02PVzLwaNZPQM6fp89DRUEsaBYWnWTrGkqbv12vkmWajWbaGPE1P9xcZGNNiR1stBRl>



"The **CEAP** is commissioned to advance and promote the teaching function of the Catholic Church. It contributes towards the attainment of the objective **“the total development of the human person,”** through a Catholic orientation in accordance with the norms of the Church, consistent with national development goals as expressed in the Philippine Constitution."

source: <https://www.ceap.org.ph/who-we-are/about-ceap>

**Related Article/Public Document:**

<https://www.facebook.com/slu.edu.ph/posts/pfbid02PVzLwaNZPQM6fp89DRUEsaBYWnWTrGkqbv12vkmWajWbaGPE1P9xcZGNNiR1stBRl>



# SLU Participation in policy making: poverty alleviation through education

Rev. Fr. Gilbert B. Sales, CICM, University President  
**Regional Program Director, Private Education Assistance Committee (PEAC)**

Published in: **CEAP Website**  
at URL: <https://peac.org.ph/peac-regional-secretariats/>

The screenshot shows the PEAC (Private Education Assistance Committee) website. The header includes the PEAC logo and navigation links: About PEAC, PEAC Annual Report, Programs, and 2021 PhilEd Conferen. Below the header, a paragraph explains the role of the Regional Program Director (RPD) and the Regional Program Coordinator (RPC). The main section is titled "REGIONAL PROGRAM DIRECTORS" and displays 15 portraits of directors, each with their name, title, and region. The regions are numbered 1 through 15.

Region	Director	Title
Region 1	FR. RAMON B. CALUZA, CICM	President, Saint Louis College of San Fernando, La Union
Region 2	SR. MERCEDES O. ANG, SPC	President, St. Paul University Philippines
Region 3	SR. LYDIA VILLEGAS, OSB	President, St. Scholastica's Academy, San Fernando, Pampanga
Region 4A	DR. PETER P. LAUREL	President, Lyceum of the Philippines University - Laguna
Region 4B	DR. BRIAN L. BELEN	President, Ateneo de Naga University
Region 5	FR. ROBERTO E.N. RIVERA, SJ	President, Ateneo de Naga University
Region 6	MSGR. ELY RAFAEL D. FUENTES	Chair, Commission on Catholic Schools, Archdiocese of Iloilo
Region 7	REV. FR. EDUARDO CELIZ JR., OAR	President, University of San Jose Recoletos
Region 8	SISTER CECILIE MARIE L. LIM, RSM	President, Holy Infant College
Region 9	FR. KAREL S. SAN JUAN, SJ	President, Ateneo de Zamboanga University
Region 10	SR. MA. BUFINA B. CULLANO, BVM	President, Loretto College
Region 11	SR. MA. MARISA VIRI, BVM	President, University of the Immaculate Conception
Region 12	SR. MARIA FE D. GERODIAS, BVM	President, Notre Dame Educational Association
Region 13	FR. JOHN CHRISTIAN U. YOUNG	President, St. Scholastica's University
Region 14	FR. GILBERT B. SALES, CICM	President, Saint Louis University
Region 15	SR. MA. EVANGELINE L. ANASTASIO, SPC	President, St. Paul University Manila

"PEAC was granted the express authority to manage and administer contributions, donations, grants, bequests, gifts and/or loans from the Government of the Republic of the Philippines for programs of assistance to private education."

source: <https://peac.org.ph/about-peac/>

## Related Article/Public Document:

- [https://peac.org.ph/fr-gilbert-b-sales-cicm-dr-brian-belen-assume-rpd-for-car-and-region-4b-posts-in-june/?fbclid=IwAR1EwY-5LmqiFm9AeywTSwab9FS6vaXL7v\\_BGQWyfHBVpE46LJKy9MF5DDA](https://peac.org.ph/fr-gilbert-b-sales-cicm-dr-brian-belen-assume-rpd-for-car-and-region-4b-posts-in-june/?fbclid=IwAR1EwY-5LmqiFm9AeywTSwab9FS6vaXL7v_BGQWyfHBVpE46LJKy9MF5DDA)
- <https://www.facebook.com/slu.edu.ph/posts/pfbid027QTijAu3gVV6juMe1LA1SV73DqgLgvXotq37KkuaWvwnPh9Y4vAHUteZC2JBhYNwI>

