

AY 2023 - 2024



Saint Louis University

# Commitment to Carbon Neutral University



**13** CLIMATE ACTION



# SLU's Commitment to Environmental Sustainability

Published in the SLU Website

URL: <https://www.slu.edu.ph/environmental-programs/>

**“Saint Louis University is committed and continuing in taking action for environment sustainability. The major activities on campus are ecologically sound, socially just, economically viable, and humane, and will continue to be so for future generations.”**

Rev. Fr. Gilbert B. Sales, CICM  
University President

## Environmental Sustainability

In commitment to the CICM promotion of the integrity of creation and under its core value of social involvement, SLU has taken concrete steps in taking care of the environment and in mitigating the serious effects of global warming. SLU has strongly implemented environment-friendly practices inside the campus through its innovative “clean and green” projects that include installation of solar panels, sewage treatment plant, garbage segregation, the plastic-free Wednesday, and various activities in support to the Department of Environmental and Natural Resources (DENR) environmental campaigns and the City of Baguio and United Nation’s Sustainable Development Goals (SDGs).

## Environmental Policy Statement

Pursuant to the objectives of the CICM for the promotion of justice, peace, and integrity of creation, SLU commits to protect the environment.

## Aims & Objectives

SLU Adheres to the principles of environmental preservation, management, and sustainable development. Towards these ends, the University commits:

### Environmental Management

- Promote sound environmental management policies and practices in all of its units and campuses.
- Comply with all environmental laws, rules, and regulations.
- Encourage the academic community to be more pro-actively involved in environmental issues through programs that support ecologically sound projects and programs.
- Promote activities that will develop skills and understanding among students, faculty, and university administrators in initiating active responses and increasing awareness and involvement on environmental concerns such as but not limited to preventing pollution.

### Waste Reduction & Recycling

- Implement sustainable resource management practices, based on the Reduce, Reuse, and Recycle principles.
- Minimize the adverse environmental effects of the transport and disposal of university assets.
- Promote sustainable resource management practices in the procurement of goods and services.



SLU Sewage Treatment Plants

### Water

- Aware of the scarcity and value of freshwater, SLU shall endeavor to efficiently and responsibly use water, including identifying opportunities to recycle or reuse it.



Rainwater Storage System at the Diego Silang



Water is Life refilling stations installed to maintain campus sustainability

### Energy & Carbon Management

- SLU Shall implement a low carbon footprint strategy including the use of clean renewable energy.
- Use low carbon technologies in buildings and equipment.
- Minimize the consumption of resources and reduce carbon emissions.



SLU Baguio has taken its commitment to sustainability a step further, partnering with [WEnergy Global](#) since 2016 to work on the use of clean energy and improving energy-efficiency.

### Awareness & Training

- Integrate environmental management in the day-to-day operations of the University such as but not limited to instruction, research, extensions, and student services.
- Promote education for sustainable development through curriculum integration and relevant co-curricular and extra-curricular activities.



Sustained Tree Planting Projects of SLU

# SLU's Environmental Memos

Published in: [SLU Website](#)

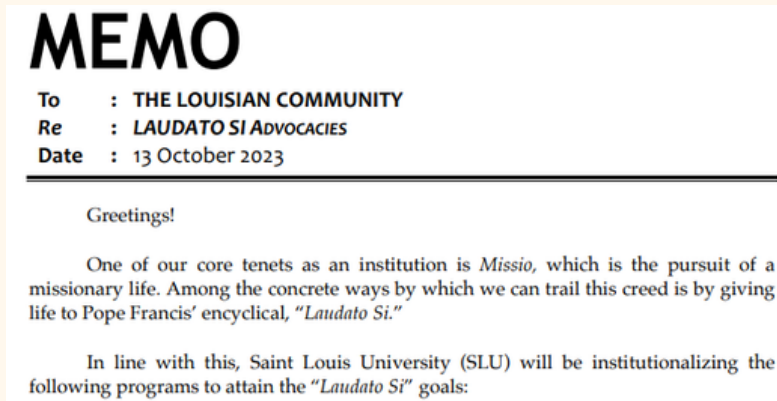
at URL: <http://www.slu.edu.ph/environmental-programs/>

- Memo on World Day of Prayer for the Care of Creation Celebration
- Opening of the Center for Environmental Management and Sustainable Development (Admin. Memo No. 16 s. 2017)
- Memo on the Application for Teacher Training on MSc in DRRM Program (Admin. Memo No. 3 s. 2017)
- Solid Waste Management (Segregation, Storage and Collection) (Admin. Memo No. 36 s. 2017)
- Formation of Environment Committees (Admin. Memo No. 43 s. 2017)
- Ban on the Use of Styrofoam and Plastic Products (Admin. Memo No. 09 s. 2018)
- Guidelines on the Condemnation and Disposal of Assets of the University (Admin. Memo No. 12 s. 2018)
- Protecting the Environment through the "THINK BEFORE YOU PRINT" Campaign (Admin Memo No. 33, s. 2019)
- Protecting the Environment through the Adoption of Austerity Measures (Admin. Memo No. 34, s. 2019)
- Consolidated Policy on the Use of Parking Spaces in the Main Campus (Admin. Memo No. 40, s. 2017)
- Memo on the Reiteration on the Ban on the Use of Styrofoam and Plastic Products (Admin. Memo No. 32, s. 2023)
- Guideline of Proper Disposal of Environmental Health Hazard Wastes (GL-CMS-015)
- Laudato Si Advocacies (Admin. Memo No. 39 s. 2023)

# SLU Administrative Memo No. 39 s.2023 – LAUDATO SI ADVOCACIES

Published in: SLU Website

at URL: <https://www.slu.edu.ph/environmental-programs/>



## Furtherance of Green Spaces in Offices:

Every office shall be adorned by live plants. This will promote environmental sustainability as well as encourage a healthier office environment which is conducive to productivity.

## Observation of Car-less Day:

No cars will be allowed entry every last Wednesday of the month. This will reduce our carbon footprint and emission. Further, this will advocate the mindful use of vehicles to aid in the mitigation of the effects of air pollution.

## Observation of Earth Hours:

All lights in the offices must be turned off from 7:00 A.M. to 9:00 A.M., and from 12:00 P.M. to 1:00 P.M. daily. This will reduce energy consumption and will solidify our commitment towards caring for the environment.

## Promotion of Meatless or Less-Meat Day:

Every Friday, lunch meals shall be a vegetarian, meatless, or at least, with less-meat diet. Students and teachers are also encouraged to avoid fast-food. These will advance a healthy lifestyle and positive disposition.

## Imparting of Ecological Trivia:

A short ecological trivia shall be shared during Flag-Raising Ceremony. This will cultivate snippets of knowledge which can usher big realizations and wisdom about caring for the earth.

## Inclusion of Ecological Prayer:

Pope Francis' ecological prayers shall be included during Flag-Raising Ceremony, Faculty Meeting, and other Gatherings. This will strengthen humanity's connection with the environment.

## Virtual Ecological Discussions

A 3 to 5-minute virtual ecological discussion will be presented every first Friday of the Month through the school's social media network. Each school/ unit will be assigned to give a presentation regarding ecological concerns. This will cultivate a deeper understanding by the Louisian Community of the importance of promoting ecological preservation and protection.

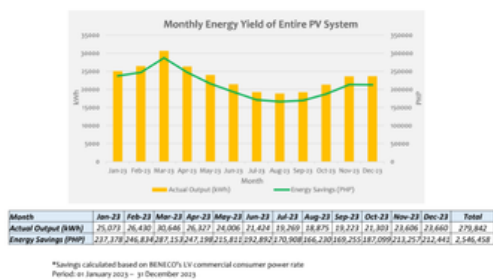
# 2023 - 2024 Clean Energy Report (Main Campus) January 2023 - July 2024

Published in: SLU Website

at URL: [https://drive.google.com/file/d/1WsN40CzMNDpx1e3fdIY1\\_PqXlnRD3adh/view?usp=sharing](https://drive.google.com/file/d/1WsN40CzMNDpx1e3fdIY1_PqXlnRD3adh/view?usp=sharing)

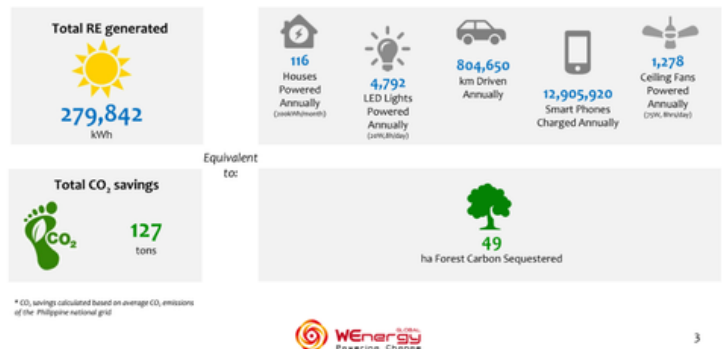


## Achieved Savings of PHP 2,546,458 in 2023! Total Clean Energy Generated: 279,842 kWh



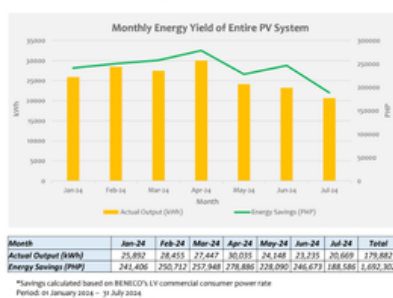
2

## Total Emission Savings in 2023



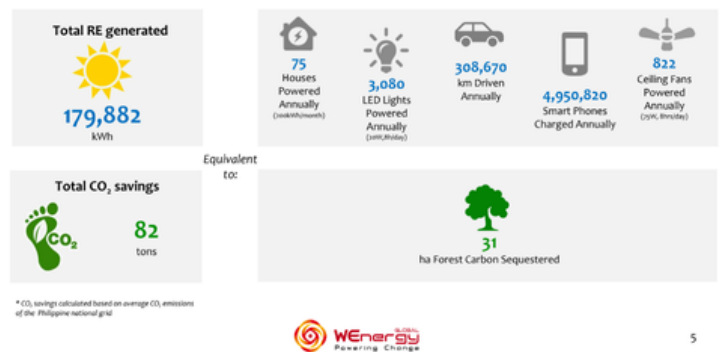
3

## Achieved Savings of PHP 1,692,302 in 2024! Total Clean Energy Generated: 179,882 kWh



4

## Total Emission Savings in 2024



5

Saint Louis University was able to save a total of **459,724 KWH** electrical energy equivalent to **Php4,238,760.00** in the main campus from **January 2023 to July 2024.**

# 2023 - 2024 Clean Energy Report (Bakakeng Campus) January 2023 - July 2024

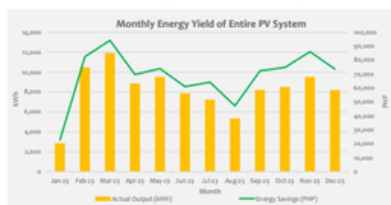
Published in: SLU Website

at URL: <https://drive.google.com/file/d/1zhapQMFNIAE7fquIWlxWm3XDXD0ICUVL/view?usp=sharing>



## Achieved Savings of PHP 821,785 in 2023!

Total Clean Energy Generated: 98,500 kWh

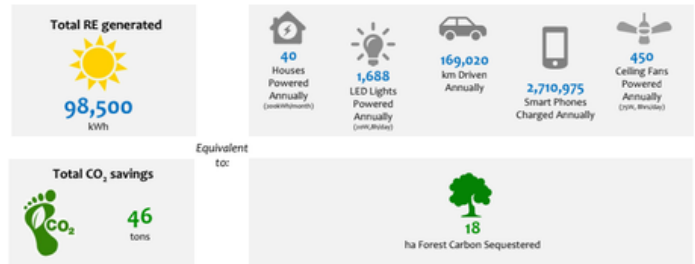


\*Savings calculated based on BENECCO's VV commercial consumer power rate  
Period: on January 2023 - 31 December 2023



2

## Total Emission Savings in 2023



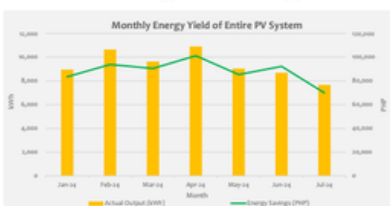
\* CO<sub>2</sub> savings calculated based on average CO<sub>2</sub> emissions of the Philippine national grid



3

## Achieved Savings of PHP 616,530 in 2024!

Total Clean Energy Generated: 65,520 kWh

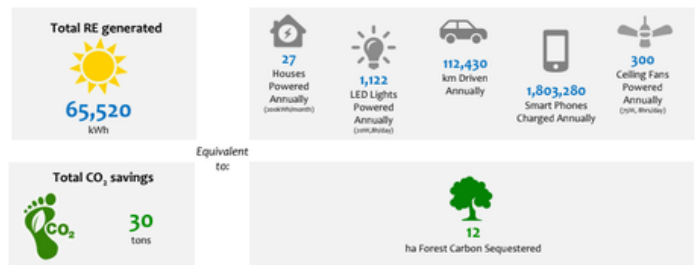


\*Savings calculated based on BENECCO's VV commercial consumer power rate  
Period: on January 2024 - 31 July 2024



4

## Total Emission Savings in 2024



\* CO<sub>2</sub> savings calculated based on average CO<sub>2</sub> emissions of the Philippine national grid



5

Saint Louis University was able to save a total of **164,020 KWH** electrical energy equivalent to **Php1,438,315.00** in the Bakakeng campus from **January 2023 to July 2024.**

# 2023 - 2024 Clean Energy Report (SLU Hospital) January 2023 - March 2024

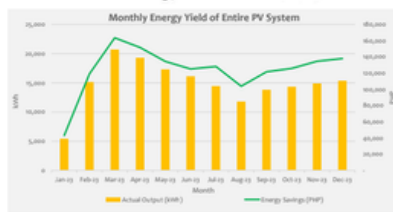
Published in: SLU Website

at URL: <https://drive.google.com/drive/u/0/folders/1F3u7B8fQgA7IO5O7ug11j1PxEJMITOD>



## Achieved Savings of PHP 1,489,105 in 2023!

Total Clean Energy Generated: 178,630 kWh



Month	Jan-23	Feb-23	Mar-23	Apr-23	May-23	Jun-23	Jul-23	Aug-23	Sep-23	Oct-23	Nov-23	Dec-23	Total
Actual Output (kWh)	5,423	15,117	20,702	15,751	17,304	14,624	14,454	11,289	13,809	14,125	14,000	11,905	178,630
Energy Savings (PHP)	48,040	128,238	163,579	113,632	124,498	125,679	128,200	103,626	122,582	125,902	124,606	117,862	1,489,105

\*Savings calculated based on BENECCO's VV commercial consumer power rate  
Period: 01 January 2023 - 31 December 2023



2

## Total Emission Savings in 2023

Total RE generated



178,630 kWh

74 Houses Powered Annually (peak/1month)

3,058 LED Lights Powered Annually (unit/1month)

306,525 km Driven Annually

4,916,360 Smart Phones Charged Annually

816 Ceiling Fans Powered Annually (20% Runtime)

Equivalent to:

Total CO<sub>2</sub> savings



83 tons



32

ha Forest Carbon Sequestered

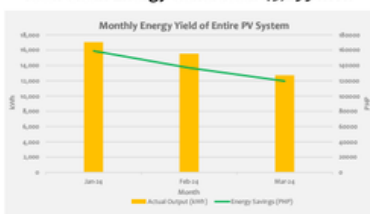
\* CO<sub>2</sub> savings calculated based on average CO<sub>2</sub> emissions of the Philippine national grid



3

## Achieved Savings of PHP 415,337 in 2024!

Total Clean Energy Generated: 45,299 kWh



Month	Jan-24	Feb-24	Mar-24	Total
Actual Output (kWh)	17,917	15,501	12,791	46,209
Energy Savings (PHP)	158,840	136,883	119,552	415,337

\*Savings calculated based on BENECCO's VV commercial consumer power rate  
Period: 01 January 2024 - 31 March 2024



4

## Total Emission Savings in 2024

Total RE generated



45,299 kWh

18 Houses Powered Annually (peak/1month)

776 LED Lights Powered Annually (unit/1month)

77,724 km Driven Annually

1,246,635 Smart Phones Charged Annually

205 Ceiling Fans Powered Annually (20% Runtime)

Equivalent to:

Total CO<sub>2</sub> savings



21 tons



8

ha Forest Carbon Sequestered

\* CO<sub>2</sub> savings calculated based on average CO<sub>2</sub> emissions of the Philippine national grid



5

Saint Louis University was able to save a total of **223,929 KWH** electrical energy equivalent to **Php1,904,442.00** in the SLU Hospital from **January 2023 to March 2024.**

# CALL FOR RESPONDENTS – “Carbon Footprint Calculator: An Emissions Analysis for SLU”

Published in the SLU Website

URL: <https://www.slu.edu.ph/2023/09/11/call-for-respondents-carbon-footprint-calculator-an-emissions-analysis-for-slu/>



## CARBON FOOTPRINT CALCULATOR: AN EMISSIONS ANALYSIS FOR SAINT LOUIS UNIVERSITY

Boado, Melissa May M., Permato, Mark Angel P., Mabbayad, Kyle Vincson P., Angeles, Mark P., Reyes, Jules Romeo P., Arboleda, Jonah S., Mayandoc, Majelle Drendel S., Cuyos, Ambroze Lexter G., Hipolito, Maureen Anne R., Corpuz, Jonathan D., Domondon, Jamelle Issa C., Abril, Jhowelaine D.

Department of Chemical Engineering, School of Engineering and Architecture, Saint Louis University, Baguio City

### ABSTRACT

The impact of carbon emissions to the environment are immensely putting everyone in danger if not kept monitored and reduced. Carbon footprint makes up the total greenhouse gases emitted by an individual, organization, or a product. It is known that these gases cause climate change. By understanding carbon footprint, emission sources can be identified. Actions can be rendered to lessen carbon emissions generated. This research study aims to develop a carbon footprint calculator that can be used by the institution of Saint Louis University to reduce its carbon emissions and embody the Philippines' priority of reducing the greenhouse gas emissions. The study is conducted at Saint Louis University – Main Campus in Baguio City and will gather time-frame data of five years, including pre- and post-pandemic. It utilizes the quantitative research method to enable the students to analyze data systematically. Correlational research design is applied to instate relationship between the variables and the trends generated by the carbon footprint calculator. The research study employs on-site assessments, survey questionnaires, and application of Python software for the data-gathering tools. Treatment of data adapts to the framework of the 2017 Philippine GHG Inventory and Reporting Protocol. Data are analyzed through the use of ARIMA and SARIMA to account seasonality of the data. The results obtained with the use of the carbon footprint calculator will be used to predict the carbon footprint emissions of Saint Louis University until the year of 2030. This will aid Saint Louis University to make action plans on how to reduce their carbon emissions and be in line with the sustainable development goals.

BS Chemical Engineering 4th-year students of Saint Louis University invite the Louisian students of the School of Teacher Education and Liberal Arts (STELA), School of Engineering and Architecture (SEA), School of Medicine (SOM), and the School of Advanced Studies (SAS), to make a stand to reduce carbon emissions by participating in the study, “***CARBON FOOTPRINT CALCULATOR: AN EMISSIONS ANALYSIS FOR SAINT LOUIS UNIVERSITY.***” The study aims to develop a Carbon Footprint calculator to monitor and reduce the carbon emissions of SLU.

# SLU as Consortium Member of Dalan ni Taltallak: Committed to Low-Carbon Transport Research and Innovation

Ceremonial MOA Signing and Launching of Dalan Ni Taltallak  
Held at Gevers Hall, SLU

**14 December 2022**

Published in: **SLU Website**

at URL: <https://www.slu.edu.ph/2022/12/14/ceremonial-moa-signing-and-launching-of-dalan-ni-taltallak-held-at-gevers-hall-slu/>



The name, Dalan Ni Taltallak, conjoins three local terms in the Cordillera region: “Dalan,” “Ni,” and “Taltallak.” As a verb, “Dalan” means traveling on foot or walking. It is an Ifugao and Ilokano phrase for “way or trail” “Taltallak” is an Ifugao and Kankanaey phrase that refers to the wooden bicycles developed by indigenous peoples in the Ifugao Province as a mode of access or transportation within the community. “Ni” is an Ibaloi term that translates to the English preposition “of.” It represents low-carbon transportation that was built and operated with the use of both indigenous and scientific knowledge. As a result, “Dalan Ni Taltallak” can be translated as “developing access to or paving the way for low carbon transportation.”

As member universities of Dalan Ni Taltallak, the Baguio Consortium for Low Carbon Transportation research and innovation, Saint Louis University, University of Baguio, and University of the Cordilleras signed a Memorandum of Agreement on November 25, 2022 for environmental protection and transportation research with the Department of Transportation (DOTr), the City Government of Baguio, and the United Nations Development Programme (UNDP). The MOA signing was conducted at Gevers Hall, Saint Louis University.

# SLU receives recognition from DOTr and UNDP for key role in Low Carbon Transport Project

22 November 2023

Published in: SLU Website

at URL: <https://www.slu.edu.ph/2023/11/22/slu-receives-recognition-from-dotr-and-undp-for-key-role-in-low-carbon-transport-project/>



In the recently held Recognition Night of the Promotion of Low Carbon Urban Transportation Systems in the Philippines (LCT) Project at the Marco Polo Hotel Ortigas on 14 November 2023, the Department of Transportation (DOTr) and the United Nations Development Programme, Philippines (UNDP) presented a plaque of recognition to Saint Louis University for its steadfast support and unwavering commitment to the LCT Project.

As part of the Dalan ni Taltallak Consortium of Universities for LCT Research and Innovation with the University of Baguio and the University of the Cordilleras, SLU has established its own LCT Research Laboratory to address the need for sustainable transportation in Baguio City and nearby communities. UNDP, for its part, donated hardware and simulation software to SLU to ensure the continuity of research projects on LCT and other climate action initiatives.

SLU remains strongly committed to environmental advocacies under its Laudato Si programs and the Sustainable Development Goals Center. The DOTr and UNDP recognition is proof of the university's efforts to address SDG 11: Sustainable Cities and Communities, SDG 13: Climate Action, and SDG 17: Partnerships for the Goals.

# SLU Basic Education School Environmental Programs and Initiatives

Published in: **SLU Official Website**

at URL: <https://www.slu.edu.ph/2023/04/12/slu-basic-education-school-environmental-programs-and-initiative/>



The most effective way to protect the environment is to prevent waste. Proper waste classification facilitates disposal and minimizes toxic waste in ecosystems. Awareness of limited resources encourages conscious consumption and recycling efforts. SLU is dedicated to protecting human health, natural resources, and the environment. SLU implements environmental programs and initiatives to promote awareness and engage the school community in conservation efforts.

## 1. HIKWATAN: Ecological Integrity Program

“HIKWATAN” is an Ifugao terminology that means “cleaning, or the habit of doing some weeding to help naturally regenerate trees to grow.” The school’s “Hikwatan” Ecological Integrity Program emphasizes environmental awareness and the importance of ecological processes to understand the fragility of our environment and the importance of its protection. This system of environmental management addresses the environmental impact of the school’s activities. It helps to establish goals, processes, and procedures that will improve the school’s impact on the environment and the health of the people in the community.

## 2. Cash from Trash: A Clean and Green Program

There are designated “Earth Bins” (trash bins shaped like the Earth) within the school campus, wherein all used containers/bottles of drinks are dunked into. The collection is done by designated staff members and even the members of the YES-O Club and consequently stored temporarily in the school’s Materials Recovery Facility (MRF). These collected trashes are then sold on a regular basis. The collection is kept by the school Cashier, and at the end of the academic year, the total amount is used to purchase school materials to augment the learners’ instructional materials.

## 3. Solid Waste Management Program through:

### A. Materials Recovery Facility

In the SLU BEdS, an existing Materials Recovery Facility (MRF) stores solid wastes from the classrooms, offices, and canteens that can still be reused or recycled. The other materials that can no longer be utilized are then sold to junk shops to generate funds to purchase needed additional materials for the pupils/students to use.

### b. Waste Segregation Program

The school community uses designated trash bins to put their biodegradable and non-biodegradable wastes. This practice is enhanced and supported by the curriculum as the Science Department takes the lead in informing the pupils/students about this advocacy and mission of the school as well as the advantages of putting this program into practice in school and even at home and in the community.

## 4. “Gulayan sa Paaralan” and the Observance of “Vegetable Day” in the Pupils’ Food Schedule

Incorporating vegetables into the pupils’ diet is genuinely beneficial to their health. Thus, the elementary department has incorporated into its Food Schedule every Wednesday and Friday the pupils’ consumption of vegetables and daily for them to eat fruits at recess or lunch. In support of this meaningful practice, the school has allotted a piece of land on its campus where native vegetables are planted and reared by the maintenance personnel as well as the club members. The school personnel and some parents have benefited from the vegetables harvested from the plots.

## 5. School Beautification Program and Clean and Orderly Classrooms and Offices

The school emphasizes beautification through a constant program. Plants and trees abound, and classrooms and offices are maintained clean and orderly. The annual selection of the Cleanest and Most Orderly Classrooms and Offices fosters a pleasant atmosphere and conducive learning environment for all.

## 6. Smoke-free, Plastic-free, Styro-free Campus Advocacies

Posted within strategic places within the school campus are placards and posters depicting the advocacies the school promotes.

## 7. Energy Conservation Advocacy

The school promotes energy conservation through mindful use of electricity and equipment. Teachers and staff report faulty equipment for repairs. This lesson is taught in classrooms to encourage pupils and students to conserve energy at school and at home for the benefit of the environment.

## 8. BYOM (Bring Your Own Mug/Materials) Advocacy

One striking practice among the teachers and staff is this advocacy wherein they bring their own coffee mugs and/or utensils during meetings and special gatherings when snacks are served. The school continues to avoid purchasing bottled water or juice in tetra packs for snacks. When coffee is served, the teachers and staff bring and use their own mugs instead.

# Saint Louis University embraces Planetary Health: A commitment to global well-being

Published in:

The Planetary Health Alliance Website at URL: <https://phalliance.medium.com/welcome-new-alliance-members-691dab87665a>

The Planetary Health Alliance Newsletter at URL: <https://mailchi.mp/jhu/planetary-health-newsletter-may2024-17980998?e=%5bUNIQID>



## Member News

In July, we welcomed 8 new Alliance members: Faculty of Medicine University of Ottawa, Internews, Saint Louis University, Food for Humanity Initiative, Brainware University, PEACH Health Ontario, Portuguese Council for Health and Environment – CPSA, and World Against Single use Plastic (WASUP).

The Planetary Health Alliance, a promising coalition of leading institutions, NGOs, and research bodies, stands at the forefront of efforts to safeguard the health of both people and the planet. With a mission rooted in understanding and mitigating the impacts of environmental change on human health, the PHA serves as a pivotal platform for innovative research, advocacy, and policy development.

The decision of Rev. Fr. Gilbert B. Sales, CICM, PhD, SLU President, to become an institutional member of the PHA underscores its steadfast commitment to advancing knowledge and fostering actionable solutions in planetary health. By joining forces with this global alliance, Fr. Sales positions the university at the nexus of cutting-edge research and collaborative initiatives aimed at tackling some of the most pressing challenges of our time.

At SLU, we recognize the urgent need for interdisciplinary approaches to address the complex issues facing our planet. By becoming a member of the PHA, we affirm our dedication to leveraging our expertise across various disciplines to promote sustainable practices and improve the well-being of communities worldwide.

As the challenges of anthropogenic climate change, environmental degradation, and public health crises continue to mount, institutions like Saint Louis University are pioneering solutions that prioritize the health of both people and the planet. Through its partnership with the PHA, SLU exemplifies a steadfast dedication to building a sustainable future where ecological integrity and human well-being thrive in harmony.

*Saint Louis University, a Laudato Si university, strongly promotes planetary health advocacies by steadfastly doing its tasks to promote and conscientiously perform environmental preservation and protection. Through the collective efforts of the university stakeholders, they actively perform their duties and responsibilities in promoting the integrity of creation. By joining the other Planetary Health Community members, they join the global movement in restoring and preserving our common home.*

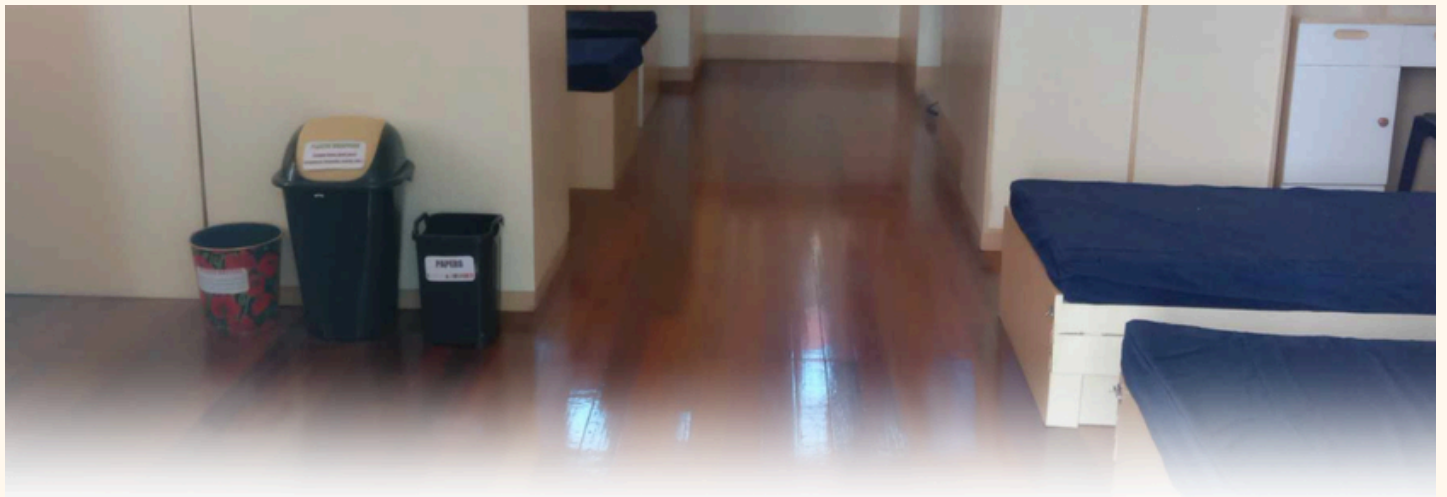
# SLU Implements Strict Solid Waste Management Practices in Residence Halls

Published in the SLU Website

URL: <https://www.slu.edu.ph/2023/11/17/slu-implements-strict-solid-waste-management-practices-in-residence-halls/>

In a commitment to responsible environmental stewardship, Saint Louis University (SLU) has implemented stringent solid waste management procedures within its Residence Halls. The university recognizes waste management as a crucial process from collection to transportation and disposal.

The waste management process begins within the rooms of the occupants, adhering to the principle of Management at Source. Each room is equipped with labeled trash bins to facilitate proper segregation of solid waste, aligning with the prescribed Solid Waste Classification Guide. Occupants are assigned specific times to bring their sorted trash to the designated garbage area, where labeled containers or trash bags are provided.



## SLU Implements Strict Solid Waste Management Practices in Residence Halls

 /slu.edu.ph  slu.edu.ph



Only properly segregated solid waste materials are accepted, subject to inspection by assigned staff. The room occupant in charge for the day is required to sign a logbook for record-keeping purposes.

Failure to properly dispose of waste incurs a fine of P50.00 per location of litter per day. Disciplinary action may also be imposed.

The collected waste, especially recyclables, undergoes further segregation by staff for sale or donation to recycling centers. Beyond its ecological impact, this practice instills a sense of responsibility and discipline among students, contributing to a cleaner and more sustainable living environment within the university.

# SLU is a certified green campus, ranked 658th worldwide in the UI GreenMetric World University Rankings 2023

Published in: UI Green Metric Website

at URL: <https://greenmetric.ui.ac.id/rankings/overall-rankings-2023>



In its first time participating, Saint Louis University (SLU) broke ground in being ranked 658th in the UI GreenMetric World University Rankings 2023 released on 5 December 2023.

With a total score of 5,732, affirming the continued prominence and consistent track record of the University in its advocacy towards sustainability as a green campus, SLU was ranked fourth among the private higher education institutions (PHEIs) and 12th among HEIs in the country included in the list. SLU was the only private HEI in the Cordillera Administrative Region (CAR) and one of the two HEIs in the Region that made it in the rankings.

Being included in the list of UI GreenMetric World University Qualified universities around the world underscored on the institution's ecological footprint and sustainable education and research.

# SLU YCE Embarks on Project Moss: Promoting Sustainability One Plant at a Time

Published in the SLU Website

at URL: <https://www.slu.edu.ph/2024/03/13/slu-yce-embarks-on-project-moss-promoting-sustainability-one-plant-at-a-time/>



The Saint Louis University (SLU) Youth Council of Ecolodians (YCE) has officially initiated their innovative project known as “Project Moss”, spearheaded by the passionate environmental advocate and SLU YCE Former President, Frank Christopher D. Pacio.

Project Moss was born out of a collective desire to make a tangible impact on our environment, to nurture and protect the precious ecosystems that sustain life on Earth. Spearheaded by President Pacio, the project took root with the acquisition of Spanish Moss (*Tillandsia usneoides*), a resilient and versatile plant known for its air-purifying properties and role in supporting biodiversity.

Spanish Moss, known for its air-purifying qualities and aesthetic appeal, was chosen as the inaugural plant for Project Moss. The Project Moss initiative was kicked off with great enthusiasm as the SLU YCE, in collaboration with the SLU Campus Planning, Maintenance, and Security Department (CPMSD), successfully distributed 100 pieces of Spanish Moss at the Fountain area of the campus last December 2023. This marked the beginning of a concerted effort to not only beautify the campus but also contribute to the achievement of the SDGs. The response was nothing short of inspiring, as students and faculty alike eagerly embraced the opportunity to contribute to a greener, healthier future.

The SLU YCE, under the leadership of President Pacio, identified the potential of Spanish Moss to address multiple SDGs, including Goal 11 (Sustainable Cities and Communities), Goal 13 (Climate Action), and Goal 15 (Life on Land). By distributing these mosses, the organization aims to create a greener and more sustainable environment within the campus premises.

# SLU holds blessing ceremony for the SLU-SHMC Sewage Treatment Plant

Published in the SLU Website

at URL: <https://www.slu.edu.ph/2023/12/04/slu-holds-blessing-ceremony-for-the-slu-shmc-sewage-treatment-plant/>



The blessing ceremony of the Sacred Heart Medical Center (SHMC) Sewage Treatment Plant (STP) on 04 December 2023 at 10 in the morning marked the significant initiative between KBWorld Trading Corporation and Saint Louis University (SLU) to conserve and protect the atmosphere, rooted in the advocacy of environmental stewardship and sustainable progress.

As an inspiration to the Louisian community, the STP contributes to the preservation of the environment by treating sewage from public sewers and turning the same into clean and odorless water.

Through this project, KB World Trading Corp. aims to be a dependable steward and a constant force behind SLU's water resources. In order to ensure a future in which sustainability and advancement coexist peacefully, KB World confirms its commitment to work hand in hand with SLU to be a stable, enduring partner in the noble cause of supplying clean water. Together, they set out to create a campus where the expansion and vigor of knowledge are reflected in the cleanliness of the water.



13 CLIMATE ACTION



# SLU's Involvement in Climate Change Advocacy

Published in the Baguio City Public Information Office Facebook Page

at URL: [https://www.facebook.com/photo.php?](https://www.facebook.com/photo.php?fbid=907356857420958&id=100044399560402&set=a.404645651025417)

[fbid=907356857420958&id=100044399560402&set=a.404645651025417](https://www.facebook.com/photo.php?fbid=907356857420958&id=100044399560402&set=a.404645651025417)



The Saint Louis University (SLU) research consortium extends their expertise on mitigating global warming and climate change through small yet significant steps in the way of university programs, practices and research.

This adds up to the school's environmental protection program anchored on the Catholic church' "Laudato Si," Pope Francis' encyclical with a subtitle, "on call for our common home."

In the said material, the pope critiqued "consumerism and irresponsible development," lamented "environmental degradation and global warming;" and calls all people to "swift and unified global action."

In SLU, among the institutional practices to attain sustainable development goals (SDG) are the observance of a car-less day and earth hours as fuel-saving measures, promotion of meatless or less meat day for health, furtherance of green spaces in the offices, and imparting of ecological prayers during ceremonial activities. Pope Francis' "Laudato Si" is the response and hope for the earth and the poor; adoption of simple lifestyle; ecological economics, education and spirituality; community engagement and participatory action.

Among the university programs, research and innovations on eco-consciousness, sustainability and technology, for SDG are the solar panel systems at SLU and Luna Terraces housing in Irisan to reduce energy consumption with studies on manufacturing, installation, operation, decommissioning and CO2 emission reduction at 92.5%; and a solar power system for an agricultural tramline in Bauko, Mountain Province which are viable and economic.

A rainwater energy harvesting system which uses turbines and turns kinetic to electrical energy, benefitting rural electrification or areas prone to power interruptions was also presented as with Balili river as the subject of a real time monitoring system, keeping track of its pH, turbidity and total dissolved solids.

SLU also has its own wastewater treatment system; to clean up water for campus cleaning, gardening and other purposes.

Other accomplished researches were; municipal lecheate treatment using Philippine natural zeolite; self-monitoring and auto-reporting trash shredder bin for smart waste management; bin design for automatic on/off shredder equipment for safe and anti-jam device.

The research and innovation center and the SLU department of agricultural economics also delved on global and regional food losses and food waste, food upcycling to curb post-harvest losses in the vegetable supply chain, and agricultural and vegetable processing; with partner agencies. The environmental, economic and social impacts, baseline assessment and stakeholder perceptions, knowledge valorisation and transport, and science communication for the studies were also considered.

# Tree Care Activity and Replacement Planting Program in SLU

Published in the Baguio City Public Information Office Facebook Page  
at URL:

<https://www.facebook.com/pio.baguio/posts/pfbid0fq2R17fymLwBtCqFbUjyMstHSBQNfU2FmosNAv8dPpD2gSRUR8w3xJ4WD6FE8dUaI>

Forester Floro Bastian of the City Environment and Parks Management Office Urban Forestry Management Division facilitates a Tree Care Activity and Replacement Planting with SLU College of Engineering students today, Dec. 3 as part of the school's support to sustainable cities and climate change mitigation programs.



# YCE initiates change through environmental action with Project Greenify

Published in the SLU Website

at URL: <https://www.slu.edu.ph/2024/04/02/yce-initiates-change-through-environmental-action-with-project-greenify/>



In a bustling world where concrete jungles dominate the landscape, a beacon of green hope shines bright at Saint Louis University (SLU) through the unwavering dedication of its Youth Council of Ecolodians (YCE). As the heart of Baguio beats with environmental fervor, the SLU YCE, the university-wide student environmental organization, stands at the forefront, championing the cause of sustainability.

The chosen plant for Project Greenify 1.0 is the resilient and ever-essential Snake Plant. Known for its air-purifying qualities and minimal maintenance requirements, this green gem was carefully selected to grace the halls and corners of SLU's Main Campus.

This March 2024, the SLU YCE embarked on a mission to bring the vitality of nature into the heart of campus life. Thanks to the collaborative efforts with the SLU Campus Planning, Maintenance, and Security Department (CPMSD), the organization is already distributing 50 Snake Plants across various comfort rooms at the Main Campus. With determination as firm as the plants they nurture, the YCE pledges to extend their green reach further. By the end of March, all 50 plants will find their homes in every comfort room on campus, a testament to SLU's commitment to sustainability.

With unwavering passion and a steadfast commitment to sustainability, the SLU Youth Council of Ecolodians invites every member of the SLU community to join them in this green revolution.